

**Upper Darby School District
MIDDLE SCHOOL CODE OF CHARACTER**



Opportunity • Unity • Excellence

2023-2024 School Year

Table of Contents

Philosophy	2
Responsibilities of the Student	2
Responsibilities of the Staff	3
Responsibilities of the Families	3
Rights of Students and Families	3
Frequently Used Terms	5
Three-Tiered System of Behavioral Support	9
Definitions of Specific Offenses	10
Searches	16
Physical Restraint	16
Late to School Policy	16
PBIS Tier II Program	16
Positive Classroom Management Strategies	17
Tier I-III Code of Conduct Behaviors of Concern	17
Central Administration Pupil Service Contact Information	25

Middle School Code of Character

Upper Darby School District

This document can be provided or translated in languages other than English, please contact your child's building administrator or [click the link below for your preferred language](#).

[UDMS بالغة العربية](#) Arabic -

[UDMS কোড অব ক্যারেক্টার](#) Bengali

[ਪੰਜਾਬੀ ਵਿੱਚ ਚਰਿੱਤਰ ਦਾ ਯੂਡੀਐਮਐਸ ਕੋਡ](#) Punjabi

[El Código de Carácter UDMS en español](#) Spanish

[UDMS اردو میں](#) Urdu -

[Mã ký tự UDMS bằng tiếng Việt](#) Vietnamese

Philosophy

The Upper Darby School District Middle Schools' Code of Character embodies the basic principles of responsibility, respect, and safe student behavior. We provide a restorative approach to students' concerning behaviors, and the importance of stakeholder relationships is integral to this approach. Building on our commitment to equity and Positive Behavioral Interventions and Supports (PBIS), Upper Darby School District continues to work to embed restorative practices and trauma-informed care as part of our school's culture and climate across all settings.

Upper Darby School District believes that behaviors develop over time and that school responses to behaviors of concern should be developmentally appropriate, considering each child's needs. A continuum of instructional strategies and suggested behavioral responses support teaching and learning, foster positive behaviors, and reflect a restorative philosophy. A restorative approach to discipline affords opportunities for students to learn from their mistakes, correct wrongdoings that result from their behavior, and restore relationships that are disrupted by their actions.

We believe relationships are essential to student academic success and social, emotional, and behavioral development. In all practices, our responses to student behaviors will support the ongoing development of the child, the school community, and the relationship between both.

Responsibilities Of Students

Upper Darby School District ***STUDENTS*** have the responsibility to:

- contribute to maintaining a safe, supportive and orderly school environment that is conducive to learning and to show respect and dignity to other persons and to property
- practice respectful, responsible, and safe behaviors
- arrive on time, prepared to actively participate in their learning
- work to their potential both inside and outside of the classroom
- respect school property and ensure that safe conditions continue in our school.
- know the rules and expectations for their behavior
- ask questions when they do not understand
- seek help in solving problems that might lead to discipline
- work to develop strategies to control anger/frustration
- maintain behavior that is free from all forms of bullying, harassment, and discrimination
- empower students to utilize elements of restorative justice to resolve conflict

Responsibilities of Staff

*Upper Darby School District **EDUCATORS** have the responsibility to:*

- establish and maintain a climate of mutual respect and dignity for all students
- establish an environment that is culturally sensitive
- model and teach positive expected behaviors across all areas and disciplines
- know school expectations, policies, and rules, and enforce them in a fair and consistent manner
- effectively communicate with students, families, administration about academic and behavioral concerns
- Be aware and informed of your own professional responsibilities

Responsibilities of Families

*Upper Darby School District **FAMILIES** have the suggested responsibility to:*

- recognize that the education of their child(ren) is a joint responsibility of families and the school community
- build positive relationships with school staff and communicate with teachers
- Support your student(s) timeliness and attendance
- support student's adherence to all safety precautions, rules, and policies
- share concerns as needed
- read building level and school district communications
- Participate!- attend school informational meetings, join our Home and School Association, attend family conferences, and events
- know school rules and help their children understand them
- help their children deal effectively with peer pressure

Rights of Students & Families

The Upper Darby School District has the shared belief that families and students are an integral part of the disciplinary process. All conduct matters are in compliance with local, state and federal laws. The Upper Darby School District wants all stakeholders to be aware that they have the right to appeal any disciplinary action which can be initiated through contacting school and district-level administrators.

Resident students have the right to a free, appropriate public education until age 21 or graduation from Upper Darby School District, whichever occurs first.

In cases where discipline is being considered, each student will have a fair chance to have their side of a controversy considered.

The Upper Darby School District does not discriminate against any student on the basis of race, creed, handicap, nationality, or sex. If there are any concerns regarding such matters, they should be referred to the student's teacher or guidance counselor. If the concern cannot be resolved at this level, the building administration can be asked to participate in resolving the problem. In line with school district organization, the Director of Secondary Education can be involved in any matter not resolved at the building level.

This Code of Character has been prepared in accordance with local, state and federal laws, which define student rights and specify the need for a comprehensive discipline policy. Special Education students are subject to all parts of the Code of Character. The District complies with all aspects of the Individuals with Disabilities Education Act (IDEA) and Pennsylvania Department of Education Special Education Regulations.

Responsibilities of the Student (Board Policy 235):

Attendant upon the rights established for each student are certain responsibilities, which include regular attendance; conscientious effort in classroom work and homework; conformance to Board policies and school rules and regulations; respect for the rights of teachers, students, administrators and all others who are involved in the educational process; and expression of ideas and opinions in a respectful manner.[4][7][8][9][10][11]

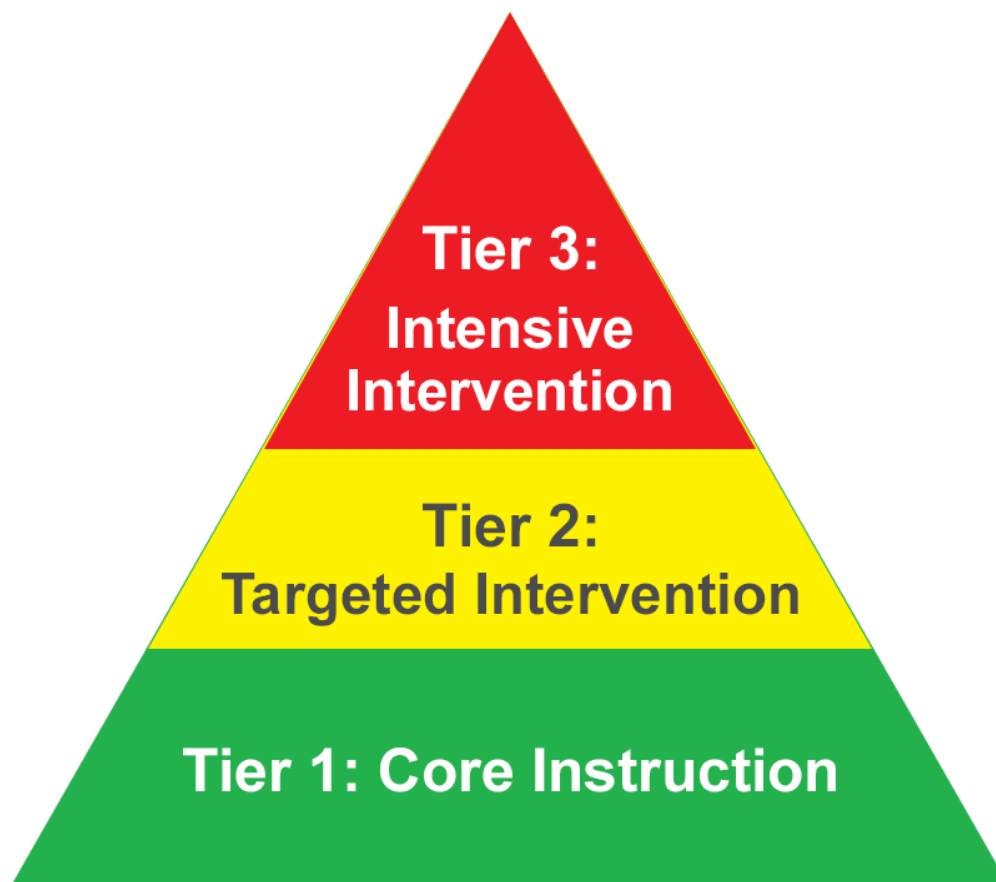
It shall be the responsibility of the student to:[7]

1. Be aware of all policies, rules and regulations and Code of Student Conduct for student behavior and conduct him/herself accordingly. Each student shall assume that, until a rule is waived, altered or repealed in writing, it is in effect.[10]
2. Volunteer information in matters relating to the health, safety and welfare of the school community and the protection of school property.
3. Dress and groom to meet standards of safety and health, and not to cause substantial disruption to the educational processes.[12]
4. Assist the school staff in operating a safe school.

5. Comply with federal, state and local laws.
6. Exercise proper care when using district facilities, school supplies and equipment.[13]
7. Attend school daily and be on time to all classes and other school functions.[9]
8. Make up work when absent from school.
9. Pursue and attempt to satisfactorily complete the courses of study prescribed by local school authorities.
10. Report accurately in student media.[11]
11. Not use obscene language in student media or on school property.[11]

Behavior(s) of concern of this policy may result in disciplinary action, consistent with the Code of Student Character and Board policy.[10][14]

3 TIERED SYSTEM OF BEHAVIOR SUPPORT



Searches

School authorities may search the person, the possessions of, and/or the locker assigned to any student. School authorities may take temporary possession of and safeguard any materials, which are considered to be evidence of the commission of an offense or of other improper activity.

In general, searches should be based on reasonable suspicion that material will be produced, which evidences the violation of the Upper Darby School District Middle Schools' Code of Character and/or a violation of applicable law, statute, or regulation. Prior to an individual locker search, the student shall be notified and be given an opportunity to be present. However, when school authorities have a reasonable suspicion that a locker contains materials that pose a threat to the health, welfare, or safety of the school population, student lockers may be searched without prior warning.

Custody and control of student lockers are shared jointly by the Upper Darby School District Middle Schools and the assigned student(s). Although students have a legitimate expectation of privacy in a school locker, the expectation should be minimal. Under certain circumstances, the interests of the Upper Darby School District to search a locker or lockers will clearly outweigh the intrusion into the privacy rights of students.

Deterring drug possession and use is a compelling concern for school officials. Appropriate searches are permissible to both discover the evidence of drugs within the school and to warn students that bringing drugs to school will not be tolerated. Canine sniff searches will be used to minimize the intrusiveness of any mass or school-wide search.

Students who attend dances at Upper Darby School District Middle Schools and prom(s) off-site will be searched at the door as part of our standard procedure. Students who are found in possession of materials that violate the Upper Darby Code of Character will be subject to school discipline.

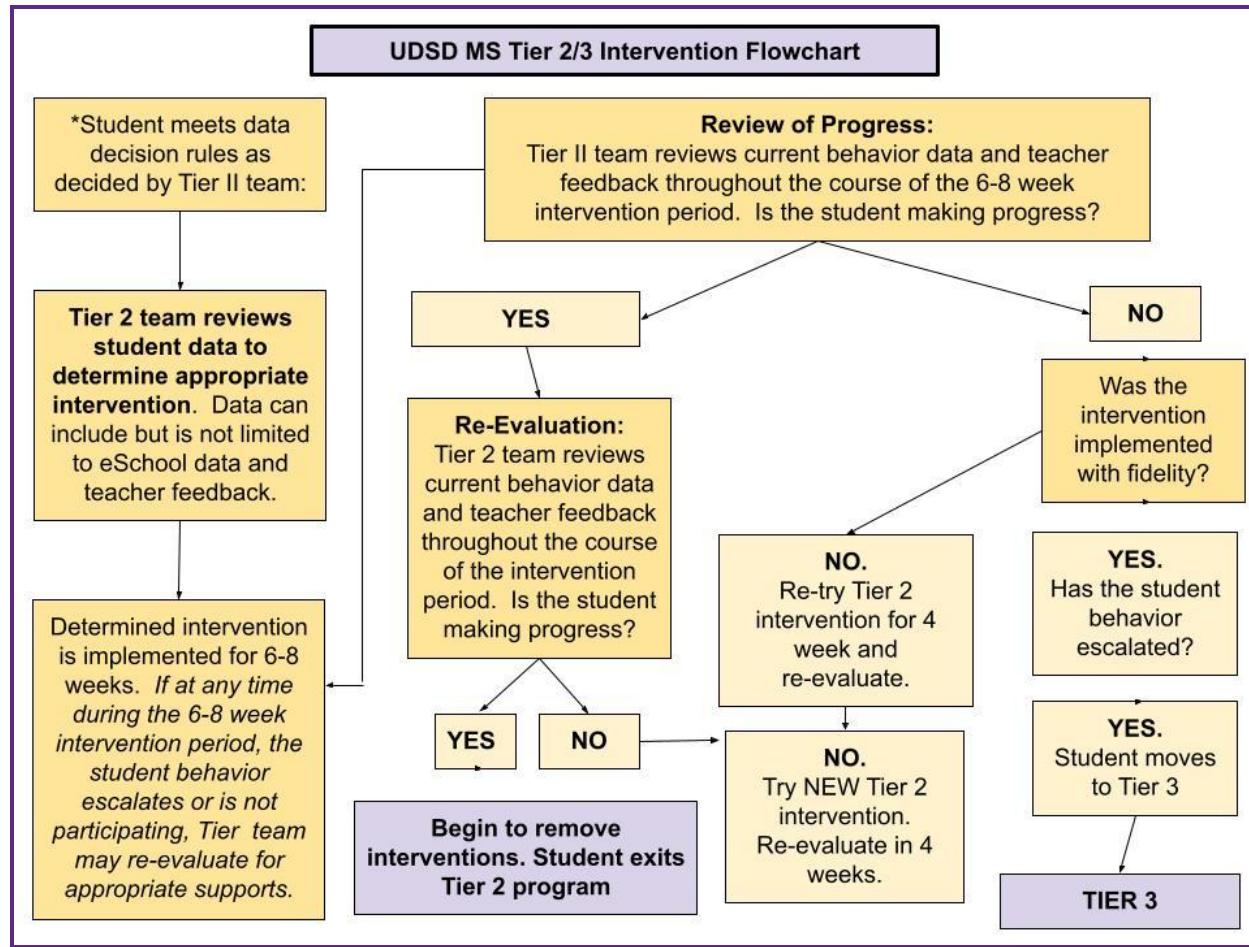
Physical Restraint

Physical restraint may be used for, but not limited to, the following reasons: defense of self or others, removal of students from the educational setting, or detaining a student while awaiting the arrival of school administrators or police.

Staff members may use reasonable force as is necessary to protect themselves from attack, protect another person or property, quell a disturbance threatening physical injury to others, and/or obtain possession of dangerous objects.

Tier II Program

As part of our PBIS framework, UDSD provides interventions for students who do not respond positively to school-wide expectations and procedures. Students demonstrating the need for additional behavioral support may be referred to the Tier II team. The procedures are as follows:



Tier I Behavior of Concern

Behaviors that impede the orderly classroom procedures which include but are not limited to the below examples. These behaviors will be addressed by an individual teacher. If Tier I behaviors persist, teachers may issue an administrative referral.

Infraction	Definition	Possible Interventions
Cursing/Abusive Language towards Student	Includes: Any profane or obscene word used in the classroom. Any term/word conceived as offensive. Any profane or obscene word used in the hallway or classroom.	<ul style="list-style-type: none"> ● Parent contact by teacher ● Teacher Reflection ● Possible referral for Conflict Resolution ● Teacher led Restorative Conference
Disrespect to Teacher	Includes: Use of inappropriate language directed toward a staff member Purposeful violation of classroom rules Yelling or arguing with a teacher.	<ul style="list-style-type: none"> ● Parent contact by teacher ● Teacher Reflection ● Teacher led Restorative Conference ● Provide student access to Student Support Service Team
Disruptive Classroom Behavior	Includes: Anything that impedes with learning Anything that interferes with	<ul style="list-style-type: none"> ● Parent contact by teacher ● Teacher Reflection ● Teacher led Restorative Conference ● Provide student access to Student Support Service Team

Infraction	Definition	Possible Interventions
	teaching Throwing objects Misuse of materials Damage to instructional materials Disrespect to peers	
Disruptive Hallway Behavior	Includes: Throwing objects Yelling Knocking on door and running Running	<ul style="list-style-type: none"> ● Parent contact by teacher ● Teacher Reflection ● Teacher led Restorative Conference ● Provide student access to Student Support Service Team
Dress Code	Board Policy 221	<ul style="list-style-type: none"> ● Parent contact by teacher ● Teacher conference ● Referral
Electronics During State Testing	Misuse of electronics as it is stated in directions provided for state assessments	<ul style="list-style-type: none"> ● Parent contact by teacher
Late to Class	A student who arrives up to 15 minutes after the scheduled class start time.	<ul style="list-style-type: none"> ● Parent contact by teacher ● SAIP
Late to School	All students who are late to school must report directly to	<ul style="list-style-type: none"> ● Parent contact by teacher ● SAIP

Infraction	Definition	Possible Interventions
	<p>their first block until the end of first period. From there late students must sign in at the front desk with Main office staff.</p> <p>UDSD Attendance Policy</p>	
Misuse of Hall Pass or Student ID	<p>Out for an excessive amount of time</p> <p>On the wrong floor or in the wrong wing</p> <p>Using another student's ID for any purpose</p>	<ul style="list-style-type: none"> ● Parent contact by teacher ● SAIP ● Restricted Hall Pass
Not Following Procedures	<p>Includes:</p> <p>Not signing in through <i>School Pass</i> upon entering the building</p> <p>Not signing in late to teacher's class</p> <p>Not carrying a pass in the hallways</p> <p>Not identifying self when stopped by an adult</p> <p>Opening or propping doors for Upper Darby students.</p> <p>Eating food in the hallways</p>	<ul style="list-style-type: none"> ● Parent contact by teacher ● Teacher Reflection ● Teacher led Restorative Conference ● Provide student access to Student Support Service Team
Possession of Electronic Device	<p>During state testing a separate code will be entered by administration for testing violations</p>	<ul style="list-style-type: none"> ● Parent contact by teacher
Violation of Acceptable Use Policy	<p>Board Policy 237</p>	<ul style="list-style-type: none"> ● Parent contact by teacher

Tier II Behaviors of Concern

Behaviors that disrupt the learning climate of the school include but are not limited to the below examples:

Infraction	Definition	Intervention
Cheating	<p>Unauthorized use or attempted use of material or information during an academic exercise.</p> <p>Copying another student's academic work or allowing another student to copy your work.</p> <p>Submitting someone else's work as your own.</p>	<ul style="list-style-type: none"> ● Parent contact by teacher ● Grade Level Team Consultation ● Apology of Action ● Teacher led Reflection ● Center team consult
Continuation of unmodified Tier I behavior	<p>Multiple Tier 1 infractions of a similar nature.</p> <p>Student exhibited no change in behavior after intervention.</p>	<ul style="list-style-type: none"> ● Parent contact by teacher ● Grade Level Team Consultation ● Teacher led Reflection ● Social worker referral
Cursing/Abusive Language towards Staff	<p>Includes:</p> <p>Any profane or obscene word used in anger towards a teacher.</p> <p>Any term/word conceived as offensive.</p> <p>Any hand gesture that is perceived offensive by the teacher.</p>	<ul style="list-style-type: none"> ● Parent contact by teacher ● Restorative conference ● Grade level team consult ● Teacher led reflection ● Administrative Intervention ● Possible out of school suspension
Cutting Class	<p>Includes:</p> <p>Physically in school but not attending a class</p> <p>Late to class by 15 or more minutes</p>	<ul style="list-style-type: none"> ● Student Conference ● Parent Contact by Teacher ● Behavior Chart ● Grade Level Team Intervention

Infraction	Definition	Intervention
Cutting/Removal from Administrative Reflection		<ul style="list-style-type: none"> ● Parent contact by administration ● Grade Level Team Consultation
Minor Physical Altercation Student to Student	Includes: Pushing/Shoving	<ul style="list-style-type: none"> ● Parent contact by teacher ● Restorative conference ● Referral to conflict resolution ● Possible SAP referral ● Grade Level Team Consultation
Minor Verbal Altercation Student to Student	Includes: Verbal Arguments	<ul style="list-style-type: none"> ● Parent contact by teacher ● Restorative conference ● Referral to conflict resolution specialist ● Possible SAP referral ● Center team consult
Plagiarism	<p>Presenting another person's writing as your own.</p> <p>Copying another person's words without proper citation</p> <p>Copying work from internet sources without proper citation</p>	<ul style="list-style-type: none"> ● Parent contact by teacher and administration ● Grade Level Team Consultation ● Apology of action ● Teacher Reflection ● Center team consult
Tampering with Instructional Materials	Can include but not limited to books, textbooks, hard copy quizzes/assessments, technology designated for instructional purposes	<ul style="list-style-type: none"> ● Parent contact by teacher and administration ● Teacher Reflection ● Center team consult

Tier III Behaviors of Concern

Behaviors that may pose a threat to the health, safety, or welfare of a member of the school community include but are not limited to the below examples:

Infraction	Definition	Intervention
Bringing Unauthorized Visitors to Campus	<p>All visitors must enter through the Main Entrance and provide identification to security. This includes opening or propping doors for unauthorized visitors.</p> <p>Includes: Food Delivery Services (Uber Eats, Door Dash, GrubHub). Students from other schools Any non-student, school aged or otherwise Graduates of Upper Darby School District Family members</p>	<ul style="list-style-type: none"> ● Parent contact by administration ● Administrative Disciplinary Conference ● Center team consult ● Social Worker referral <p>*The Principal (or designee), in consultation with the Superintendent (or designee), will contact the parent, conference with the student, and do one or more of the following:</p> <ul style="list-style-type: none"> ● Out of School Suspension ● SAP referral ● Expulsion ● Contacting law enforcement ● Criminal Prosecution ● Referral to AEDY *must meet application criteria
Causing of a False Alarm	<p>Pulling a Fire Alarm</p> <p>Any action(s) that could cause a Lock In, Lock Out, or Lock Down</p>	<ul style="list-style-type: none"> ● Parent contact by Administration ● Administrative Disciplinary Conference ● Center team consult <p>*The Principal (or designee), in consultation with the Superintendent (or designee), will contact the parent, conference with the student, and do one or more of the following:</p> <ul style="list-style-type: none"> ● Out of school suspension

Infraction	Definition	Intervention
		<ul style="list-style-type: none"> ● SAP referral ● Social Worker referral ● Expulsion ● Referral to AEDY *must meet application criteria
Continuation of Tier 2 offenses	<p>Multiple Tier II infractions of a similar nature</p> <p>Student exhibits no change in behavior after intervention</p>	<ul style="list-style-type: none"> ● Parent contact by administration ● Administrative Disciplinary Conference ● Center team consult ● Social Worker referral <p>*The Principal (or designee), in consultation with the Superintendent (or designee), will contact the parent, conference with the student, and do one or more of the following:</p> <ul style="list-style-type: none"> ● Out of school suspension ● SAP referral ● Social Worker referral ● Expulsion ● Referral to AEDY *must meet application criteria
Creating a Health/Safety Hazard	Creating unsafe conditions for students and staff on school grounds	<ul style="list-style-type: none"> ● Parent contact by administration ● Administrative Disciplinary Conference ● Center team consult ● Social Worker referral <p>*The Principal (or designee), in consultation with the Superintendent (or designee), will contact the parent, conference with the student, and do one or more of the following:</p>

Infraction	Definition	Intervention
		<ul style="list-style-type: none"> ● Out of school suspension ● SAP referral ● Social Worker referral ● Expulsion ● Referral to AEDY *must meet application criteria
Drug Paraphernalia Possession	Includes but not limited to: bong, bowl, scales (digital or otherwise), rolling papers, packaging materials ie clear, zip top bags	<ul style="list-style-type: none"> ● Parent contact by administration ● Administrative Disciplinary Conference ● Center team consult ● Social Worker referral <p>*The Principal (or designee), in consultation with the Superintendent (or designee), will contact the parent, conference with the student, and do one or more of the following:</p> <ul style="list-style-type: none"> ● Out of school suspension ● SAP referral ● Social Worker referral ● Expulsion ● Referral to AEDY *must meet application criteria
Extortion	Using intimidation or threats to obtain money, information, or anything else of value from another person.	<ul style="list-style-type: none"> ● Parent contact by administration ● Administrative conference ● Center team consult ● Social Worker referral <p>*The Principal (or designee), in consultation with the Superintendent (or designee), will contact the parent, conference with the student, and do one or more of the following:</p>

Infraction	Definition	Intervention
		<ul style="list-style-type: none"> ● Out of school suspension ● SAP referral ● Social Worker referral ● Expulsion ● Referral to AEDY *must meet application criteria
Forgery	Falsely or fraudulently making or altering a document	<ul style="list-style-type: none"> ● Parent contact by administration ● Administrative conference ● Center team consult ● Social Worker referral <p>*The Principal (or designee), in consultation with the Superintendent (or designee), will contact the parent, conference with the student, and do one or more of the following:</p> <ul style="list-style-type: none"> ● Out of school suspension ● SAP referral ● Social Worker referral ● Referral to AEDY *must meet application criteria
Gambling	Exchange of money, goods, or services in any format and/or game(s) of chance	<ul style="list-style-type: none"> ● Parent contact by administration ● Administrative conference ● Center team consult ● Social Worker referral <p>*The Principal (or designee), in consultation with the Superintendent (or designee), will contact the parent, conference with the student, and do one or more of the following:</p> <ul style="list-style-type: none"> ● Out of school suspension ● SAP referral ● Social Worker referral

Infraction	Definition	Intervention
		<ul style="list-style-type: none"> ● Expulsion ● Referral to AEDY *must meet application criteria
Gang Activity	<p>Including wearing of colors, sports paraphernalia, or any article of clothing that contains a symbol of a *Gang or the intent to show allegiance to a Gang.</p> <p>A gang shall mean any ongoing organization or group of people which has an identifiable name or identifying symbol whose members, individually or collectively engage in or have engaged in a pattern of activity that endangers or disrupts the safety of the school or members of the school community.</p>	<ul style="list-style-type: none"> ● Parent contact by administration ● Administrative conference ● Center team consult ● Social Worker referral <p>*The Principal (or designee), in consultation with the Superintendent (or designee), will contact the parent, conference with the student, and do one or more of the following:</p> <ul style="list-style-type: none"> ● Out of school suspension ● SAP referral ● Social Worker referral ● Expulsion ● Referral to AEDY *must meet application criteria
Instigating a Fight	Can include various means of instigating including but not limited to: verbal, written, electronic (SM)	<ul style="list-style-type: none"> ● Parent contact by administration ● Administrative Disciplinary Conference ● Center team consult ● Social Worker referral <p>*The Principal (or designee), in consultation with the Superintendent (or designee), will contact the parent, conference with the student, and do one or more of the following:</p> <ul style="list-style-type: none"> ● Out of school suspension ● SAP referral

Infraction	Definition	Intervention
		<ul style="list-style-type: none"> ● Social Worker referral ● Expulsion ● Referral to AEDY *must meet application criteria
Leaving School Grounds without Permission	Excludes students with a modified schedule (late entry, early dismissal, DCTS)	<ul style="list-style-type: none"> ● Parent contact by administration ● Administrative conference ● Center team consult ● Social Worker referral <p>*The Principal (or designee), in consultation with the Superintendent (or designee), will contact the parent, conference with the student, and do one or more of the following:</p> <ul style="list-style-type: none"> ● Out of school suspension ● SAP referral ● Social Worker referral
Motor Vehicle Violation	Parking on campus during the school day.	<ul style="list-style-type: none"> ● Parent contact by administration ● Administrative conference ● Center team consult <p>*The Principal (or designee), in consultation with the Superintendent (or designee), will contact the parent, conference with the student, and do one or more of the following:</p> <ul style="list-style-type: none"> ● Out of school suspension
Not following fire drill or lock down procedures	<p>Students violating lock down or fire drill procedures</p> <ul style="list-style-type: none"> ● Leaving the room during a lockdown 	<ul style="list-style-type: none"> ● Parent contact by administration ● Administrative conference ● Center team consult

Infraction	Definition	Intervention
	<ul style="list-style-type: none"> ● Making noise during a lockdown ● Not reporting to your designated area during a fire drill 	<p>*The Principal (or designee), in consultation with the Superintendent (or designee), will contact the parent, conference with the student, and do one or more of the following:</p> <ul style="list-style-type: none"> ● Out of school suspension
Possession/Sale of Stolen Goods	Possession or sale of items identified as stolen.	<ul style="list-style-type: none"> ● Parent contact by administration ● Administrative conference ● Center team consult ● Social Worker referral <p>*The Principal (or designee), in consultation with the Superintendent (or designee), will contact the parent, conference with the student, and do one or more of the following:</p> <ul style="list-style-type: none"> ● Out of school suspension ● SAP referral ● Social Worker referral
Possession/Setting off of an incendiary device	This includes lighters, matches, fireworks, and any other explosive device	<ul style="list-style-type: none"> ● Parent contact by administration ● Administrative Disciplinary Conference ● Center team consult ● Social Worker referral <p>*The Principal (or designee), in consultation with the Superintendent (or designee), will contact the parent, conference with the student, and do one or more of the following:</p> <ul style="list-style-type: none"> ● Out of school suspension ● SAP referral ● Social Worker referral ● Expulsion

Infraction	Definition	Intervention
		<ul style="list-style-type: none"> ● Referral to AEDY *must meet application criteria
Possession, Use, Sale of Tobacco	<p>Includes cigarettes, cigarillos, cigars, roll-your-own tobacco, dissolvable or smokeless tobacco.</p> <p>222-AR-0. Tobacco/Nicotine</p>	<ul style="list-style-type: none"> ● Parent contact by administration ● Administrative Disciplinary Conference ● Center team consult ● Social Worker referral <p>*The Principal (or designee), in consultation with the Superintendent (or designee), will contact the parent, conference with the student, and do one or more of the following:</p> <ul style="list-style-type: none"> ● Out of school suspension ● SAP referral ● Social Worker referral
Trespassing	<p>Being on school property while on disciplinary removal or suspension or violating the early dismissal policy by not leaving school grounds after the agreed dismissal time</p> <p>Students with modified schedules who do not leave campus following their scheduled dismissal time or those who arrive prior to their scheduled start time</p>	<ul style="list-style-type: none"> ● Parent contact by administration ● Administrative Disciplinary Conference ● Center team consult ● Social Worker referral <p>*The Principal (or designee), in consultation with the Superintendent (or designee), will contact the parent, conference with the student, and do one or more of the following:</p> <ul style="list-style-type: none"> ● Out of school suspension ● SAP referral ● Social Worker referral ● Expulsion

Infraction	Definition	Intervention
		<ul style="list-style-type: none"> ● Referral to AEDY *must meet application criteria
Violation of Bus Procedures	<p>When a student interferes with the safe operation of a school bus. Violations include:</p> <ul style="list-style-type: none"> ● Entering or riding a school bus which you are not assigned to ● Disruptive behavior that impedes bus travel ● Unsafe behavior that could lead to physical harm to students and staff ● Violations of bus procedures as outlined in Policy 810-AR-3 	<ul style="list-style-type: none"> ● Parent contact by administration ● Administrative Disciplinary Conference ● Center team consult ● Social Worker referral <p>*The Principal (or designee), in consultation with the Superintendent (or designee), will contact the parent, conference with the student, and do one or more of the following:</p> <ul style="list-style-type: none"> ● Out of school suspension ● Social Worker referral
<p>*Any violation of the Pennsylvania Crimes Code constitutes a Tier III violation. Acts that pose a direct threat to the health, safety, or welfare of others in the school include but are not limited to the following examples:</p>		
Arson	Deliberately setting fire to property	<ul style="list-style-type: none"> ● Parent contact by administration ● Administrative Disciplinary Conference ● Center team consult ● Social Worker referral <p>*The Principal (or designee), in consultation with the Superintendent (or designee), will contact the parent, conference with the student, and do one or more of the following:</p> <ul style="list-style-type: none"> ● Out of school suspension ● SAP referral

Infraction	Definition	Intervention
		<ul style="list-style-type: none"> ● Social Worker referral ● Expulsion
Assault on Staff	<p>Simple Assault on Staff: Attempts to cause intentionally, knowingly, or recklessly bodily injury to a staff member.</p> <p>Aggravated Assault on Staff: : Attempts to cause serious intentionally, knowingly, or recklessly serious bodily injury with a weapon to a staff member.</p>	<ul style="list-style-type: none"> ● Parent contact by administration ● Administrative Disciplinary Conference ● Center team consult ● Social Worker referral <p>*The Principal (or designee), in consultation with the Superintendent (or designee), will contact the parent, conference with the student, and do one or more of the following:</p> <ul style="list-style-type: none"> ● Out of school suspension ● SAP referral ● Social Worker referral ● Expulsion
Assault on Student	<p>Simple Assault on Student: Attempts to cause intentionally, knowingly, or recklessly bodily injury to another student.</p> <p>Aggravated Assault on Student: Attempts to cause serious intentionally, knowingly, or recklessly serious bodily injury to another student.</p>	<ul style="list-style-type: none"> ● Parent contact by administration ● Administrative Disciplinary Conference ● Center team consult ● Social Worker referral <p>*The Principal (or designee), in consultation with the Superintendent (or designee), will contact the parent, conference with the student, and do one or more of the following:</p> <ul style="list-style-type: none"> ● Out of school suspension ● SAP referral

Infraction	Definition	Intervention
		<ul style="list-style-type: none"> ● Social Worker referral ● Expulsion
Bomb Threat	A verbal or written threat to detonate an explosive or incendiary device to incite fear, disrupt normal activities, to cause damage to property, serious bodily harm or death regardless of the existence of the device	<ul style="list-style-type: none"> ● Parent contact by administration ● Administrative Disciplinary Conference ● Center team consult ● Social Worker referral <p>*The Principal (or designee), in consultation with the Superintendent (or designee), will contact the parent, conference with the student, and do one or more of the following:</p> <ul style="list-style-type: none"> ● Out of school suspension ● SAP referral ● Social Worker referral ● Expulsion ● Referral to AEDY *must meet application criteria
Burglary (stealing, not from a person)	Illegal entry into a building with intent to commit theft	<ul style="list-style-type: none"> ● Parent contact by administration ● Administrative Disciplinary Conference ● Center team consult ● Social Worker referral <p>*The Principal (or designee), in consultation with the Superintendent (or designee), will contact the parent, conference with the student, and do one or more of the following:</p> <ul style="list-style-type: none"> ● Out of school suspension ● SAP referral

Infraction	Definition	Intervention
		<ul style="list-style-type: none"> ● Social Worker referral ● Expulsion ● Referral to AEDY *must meet application criteria
Bullying	<p>Bullying or discriminatory harassment based on but not limited to any of the following: Race/Color/National Origin, Sex, Disability, Sexual Orientation, Religion, Title IX</p> <p>Policy 249- AR- 0</p>	<ul style="list-style-type: none"> ● Parent contact by administration ● Administrative Disciplinary Conference ● Center team consult ● Social Worker referral <p>*The Principal (or designee), in consultation with the Superintendent (or designee), will contact the parent, conference with the student, and do one or more of the following:</p> <ul style="list-style-type: none"> ● Out of school suspension ● SAP referral ● Social Worker referral ● Expulsion ● Referral to AEDY *must meet application criteria
Disorderly Conduct	<p>Intent to cause public inconvenience, annoyance or alarm by engaging in violent or tumultuous behavior, making unreasonable noise, using obscene language, or creating a hazardous or physically offensive condition by an act that serves no legitimate purpose.</p>	<ul style="list-style-type: none"> ● Parent contact by administration ● Administrative Disciplinary Conference ● Center team consult ● Social Worker referral <p>*The Principal (or designee), in consultation with the Superintendent (or designee), will contact the parent,</p>

Infraction	Definition	Intervention
		conference with the student, and do one or more of the following: <ul style="list-style-type: none"> ● Out of school suspension ● SAP referral ● Social Worker referral ● Expulsion ● Referral to AEDY *must meet application criteria
Fighting	When two or more people engage in a use of force or physical violence that requires intervention from school staff.	<ul style="list-style-type: none"> ● Parent contact by administration ● Administrative Disciplinary Conference ● Center team consult ● Social Worker referral <p>*The Principal (or designee), in consultation with the Superintendent (or designee), will contact the parent, conference with the student, and do one or more of the following:</p> <ul style="list-style-type: none"> ● Out of school suspension ● SAP referral ● Social Worker referral ● Expulsion ● Referral to AEDY *must meet application criteria
Institutional Vandalism	To knowingly vandalize, deface, or damage school property.	
Kidnapping or Unlawful Restraint	The abduction of another person; to restrain another unlawfully in circumstances that risk serious bodily injury	<ul style="list-style-type: none"> ● Parent contact by administration ● Administrative Disciplinary Conference ● Center team consult

Infraction	Definition	Intervention
		<ul style="list-style-type: none"> ● Social Worker referral <p>*The Principal (or designee), in consultation with the Superintendent (or designee), will contact the parent, conference with the student, and do one or more of the following:</p> <ul style="list-style-type: none"> ● Out of school suspension ● SAP referral ● Social Worker referral ● Expulsion ● Referral to AEDY *must meet application criteria
Reckless Endangerment	Behavior that places or may place another person in danger of death or serious bodily injury.	<ul style="list-style-type: none"> ● Parent contact by administration ● Administrative Disciplinary Conference ● Center team consult ● Social Worker referral <p>*The Principal (or designee), in consultation with the Superintendent (or designee), will contact the parent, conference with the student, and do one or more of the following:</p> <ul style="list-style-type: none"> ● Out of school suspension ● SAP referral ● Social Worker referral ● Expulsion ● Referral to AEDY *must meet application criteria
Repetition of Tier III Behavior		<ul style="list-style-type: none"> ● Parent contact by administration

Infraction	Definition	Intervention
		<ul style="list-style-type: none"> ● Administrative Disciplinary Conference ● Center team consult ● Social Worker referral <p>*The Principal (or designee), in consultation with the Superintendent (or designee), will contact the parent, conference with the student, and do one or more of the following:</p> <ul style="list-style-type: none"> ● Out of school suspension ● SAP referral ● Social Worker referral ● Expulsion ● Referral to AEDY *must meet application criteria
Rioting	Organizing, promoting, encouraging or participating in a riot; violent disturbance of the peace	<ul style="list-style-type: none"> ● Parent contact by administration ● Administrative Disciplinary Conference ● Center team consult ● Social Worker referral <p>*The Principal (or designee), in consultation with the Superintendent (or designee), will contact the parent, conference with the student, and do one or more of the following:</p> <ul style="list-style-type: none"> ● Out of school suspension ● SAP referral ● Social Worker referral ● Expulsion

Infraction	Definition	Intervention
		<ul style="list-style-type: none"> ● Referral to AEDY *must meet application criteria
Robbery	Taking property unlawfully from a person or place by force or threat of force	<ul style="list-style-type: none"> ● Parent contact by administration ● Administrative Disciplinary Conference ● Center team consult ● Social Worker referral <p>*The Principal (or designee), in consultation with the Superintendent (or designee), will contact the parent, conference with the student, and do one or more of the following:</p> <ul style="list-style-type: none"> ● Out of school suspension ● SAP referral ● Social Worker referral ● Expulsion ● Referral to AEDY *must meet application criteria
Sale, distribution, or buying/receiving a controlled substance	Behavior(s) of concern of Substance Abuse Guidelines: A student shall not knowingly sell, distribute, possess, use, transmit, or be under the influence of any narcotic drug, a hallucinogenic drug, amphetamine, barbiturate, marijuana, alcoholic beverage, intoxicant, synthetic or distilled oil, or any other kind of controlled substance. This rule pertains to actions on school grounds, at any school activity, function or event, or any vehicle designated or used by the school for student transport, including public	<ul style="list-style-type: none"> ● Parent contact by administration ● Administrative Disciplinary Conference ● Center team consult ● Social Worker referral <p>*The Principal (or designee), in consultation with the Superintendent (or designee), will contact the parent, conference with the student, and do one or more of the following:</p> <ul style="list-style-type: none"> ● Out of school suspension

Infraction	Definition	Intervention
	transportation or while traveling to or from school.)	<ul style="list-style-type: none"> ● SAP referral ● Social Worker referral ● Expulsion ● Referral to AEDY *must meet application criteria
Sexual Harassment	Unwelcome conduct of a sexual nature determined by a reasonable person to be so severe, pervasive and objectively offensive that it effectively denies a person equal access to a district education program or activity.	<ul style="list-style-type: none"> ● Parent contact by administration ● Administrative Disciplinary Conference ● Center team consult ● Social Worker referral <p>*The Principal (or designee), in consultation with the Superintendent (or designee), will contact the parent, conference with the student, and do one or more of the following:</p> <ul style="list-style-type: none"> ● Out of school suspension ● SAP referral ● Social Worker referral ● Expulsion ● Referral to AEDY *must meet application criteria
Sexual Misconduct	Including but not limited to: rape, involuntary sexual deviate intercourse, statutory sexual assault, sexual assault, aggravated indecent assault, indecent assault, indecent exposure, open lewdness, obscene and other sexual materials and performance	<ul style="list-style-type: none"> ● Parent contact by administration ● Administrative Disciplinary Conference ● Center team consult ● Social Worker referral <p>*The Principal (or designee), in consultation with the Superintendent (or designee), will contact the parent,</p>

Infraction	Definition	Intervention
		conference with the student, and do one or more of the following: <ul style="list-style-type: none"> ● Out of school suspension ● SAP referral ● Social Worker referral ● Expulsion ● Referral to AEDY *must meet application criteria
Stalking	A pattern of repeated and unwanted attention, harassment, contact or any other course of conduct directed at a specific person that would cause a reasonable person to feel fear	<ul style="list-style-type: none"> ● Parent contact by administration ● Administrative Disciplinary Conference ● Center team consult ● Social Worker referral <p>*The Principal (or designee), in consultation with the Superintendent (or designee), will contact the parent, conference with the student, and do one or more of the following:</p> <ul style="list-style-type: none"> ● Out of school suspension ● SAP referral ● Social Worker referral ● Expulsion ● Referral to AEDY *must meet application criteria
Terroristic Threats	Any written or verbal threat to commit an act of violence that would endanger others with a reckless disregard for the harm it would cause	<ul style="list-style-type: none"> ● Parent contact by administration ● Administrative Disciplinary Conference ● Center team consult ● Social Worker referral

Infraction	Definition	Intervention
		<p>*The Principal (or designee), in consultation with the Superintendent (or designee), will contact the parent, conference with the student, and do one or more of the following:</p> <ul style="list-style-type: none"> ● Out of school suspension ● SAP referral ● Social Worker referral ● Expulsion ● Referral to AEDY *must meet application criteria
Threatening School Official or Student	<p>An expression of intent to harm someone that may be spoken, written, gestured, or communicated in some other form, such as via text message or email. Threats may be explicit or implied, directed at the intended target or communicated to a third party. Behavior that suggests a threat such as weapon carrying, fighting, or menacing actions is also considered threatening behavior.</p>	<ul style="list-style-type: none"> ● Parent contact by administration ● Administrative Disciplinary Conference ● Center team consult ● Social Worker referral <p>*The Principal (or designee), in consultation with the Superintendent (or designee), will contact the parent, conference with the student, and do one or more of the following:</p> <ul style="list-style-type: none"> ● Out of school suspension ● SAP referral ● Social Worker referral ● Expulsion ● Referral to AEDY *must meet application criteria
Theft and Related Offenses	<p>To withhold property of another permanently or for an extended period of time. To steal from a member of the</p>	<ul style="list-style-type: none"> ● Parent contact by administration ● Administrative Disciplinary Conference

Infraction	Definition	Intervention
	school staff or another student.	<ul style="list-style-type: none"> ● Center team consult ● Social Worker referral <p>*The Principal (or designee), in consultation with the Superintendent (or designee), will contact the parent, conference with the student, and do one or more of the following:</p> <ul style="list-style-type: none"> ● Out of school suspension ● Social Worker referral
Possession, Use, or Under the Influence of a Controlled Substance	A student shall not possess, use, or be under the influence of any controlled substance as defined by the PA crimes code.	<ul style="list-style-type: none"> ● Parent contact by administration ● Administrative Disciplinary Conference ● Center team consult ● Social Worker referral <p>*The Principal (or designee), in consultation with the Superintendent (or designee), will contact the parent, conference with the student, and do one or more of the following:</p> <ul style="list-style-type: none"> ● Out of school suspension ● SAP referral ● Social Worker referral ● Expulsion ● Referral to AEDY *must meet application criteria
Sale/Distribution of a Controlled Substance	A student shall not sell, facilitate the sale, or distribute a controlled substance as outlined in the PA crimes code.	<ul style="list-style-type: none"> ● Parent contact by administration ● Administrative Disciplinary Conference ● Center team consult

Infraction	Definition	Intervention
		<ul style="list-style-type: none"> ● Social Worker referral <p>*The Principal (or designee), in consultation with the Superintendent (or designee), will contact the parent, conference with the student, and do one or more of the following:</p> <ul style="list-style-type: none"> ● Out of school suspension ● SAP referral ● Social Worker referral ● Expulsion ● Referral to AEDY *must meet application criteria
Possession, Sale, Use or Under the Influence of Alcohol	A student shall not possess, sell, or be under the influence of alcohol while on campus.	<ul style="list-style-type: none"> ● Parent contact by administration ● Administrative Disciplinary Conference ● Center team consult ● Social Worker referral <p>*The Principal (or designee), in consultation with the Superintendent (or designee), will contact the parent, conference with the student, and do one or more of the following:</p> <ul style="list-style-type: none"> ● Out of school suspension ● SAP referral ● Social Worker referral ● Expulsion ● Referral to AEDY *must meet application criteria
Possession, Sale, Use of Vaping Materials	A student shall not possess, sell or use a vape, vape products or e-cigarette device	<ul style="list-style-type: none"> ● Parent contact by administration ● Administrative Disciplinary

Infraction	Definition	Intervention
	222- AR-0	<p>Conference</p> <ul style="list-style-type: none"> ● Center team consult ● Social Worker referral <p>*The Principal (or designee), in consultation with the Superintendent (or designee), will contact the parent, conference with the student, and do one or more of the following:</p> <ul style="list-style-type: none"> ● Out of school suspension ● SAP referral ● Social Worker referral
Possession of Weapon	<p>A student is in possession of a weapon when the weapon is found on the person of the student, in the student's locker, under the student's control while on school property, on property being used by the school, at any school function or activity, or while the student is coming to or from school. A weapon shall include but not be limited to any knife, cutting instrument, cutting tool, nunchaku, firearm, shotgun, rifle, replica of a weapon, and any other tool, instrument or implement capable of inflicting serious bodily injury.</p> <p>218.1-AR</p>	<ul style="list-style-type: none"> ● Parent contact by administration ● Administrative Disciplinary Conference ● Center team consult ● Social Worker referral <p>*The Principal (or designee), in consultation with the Superintendent (or designee), will contact the parent, conference with the student, and do one or more of the following:</p> <ul style="list-style-type: none"> ● Out of school suspension ● SAP referral ● Social Worker referral ● Expulsion ● Referral to AEDY *must meet application criteria

All employees of the Upper Darby School District have a responsibility to promptly refer any suspected or confirmed action, which could constitute a Tier III Violation to any available administrator, school safety officers, and Children and Youth Services (CYS) as a mandated reporter. Upper Darby School District recognizes the potential for behaviors to warrant a referral to our SST team for examination into providing the student with additional support. Additionally, violations of the UDSD MS Code of Character may result in an informal hearing with the Director of Secondary Education.

Positive Classroom Management Strategies

Behaviors of concern will occur in the classroom. All teachers are encouraged to employ positive classroom management strategies within the classroom, in addition to making notes of student behavior.

- Seat Change
- Proximity
- Alternative Assignment Choice
- Non-verbal Prompt
- Verbal Redirection
- Restate Expectations
- Positive Reinforcement

Student Attendance Improvement Plan

The purpose of a Student Attendance Improvement Plan (SAIP) is to assist a student in improving their attendance. A SAIP is typically created with a student's support system—including parents/guardians, school counselors, IEP case managers, and building administrators. A SAIP is recommended for students who are habitually absent from school. Additionally, a SAIP may be recommended for students who are chronically late to school or students who are frequently cutting class.

Central Administration Pupil Service Contact Information

Edward Marshaleck
Assistant Superintendent of Student Services

emarshaleck@upperdarbysd.org
610-622-7000 ext. 3213

Dr. Brian Ursone
Director of Pupil Services
bursone@upperdarbysd.org
610-789-7200, ext. 3216

Kelley Simone
Director of Secondary Education
ksimone@upperdarbysd.org
610-789-7200, ext. 3295