

LEA Name : Upper Darby SD
Address : 4611 Bond Ave
Drexel Hill , PA 19026

County : Delaware
AUN Number : 125239452
LEA Type : SD

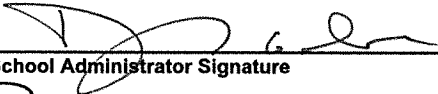
Annual Financial Report Accuracy Certification Statement

For Fiscal Year Ending
6/30/2016

Pennsylvania Department of Education
&
Office of Comptroller Operations

PDE-2056: Intermediate Unit
PDE-2057: School District, AVTS/CTC, Charter School,
and Special Program Jointure


CERTIFICATION: By signing this page I agree that the electronic data submitted is a complete and accurate statement of the financial operations and status of the local education agency for the fiscal year. It has been prepared in accordance with generally accepted accounting principles and established Commonwealth of PA reporting guidelines.



Chief School Administrator Signature

3/22/17

Date



Board Secretary Signature

3/22/17

Date

CRAIG J ROGERS

(610)789-7200 Ext :3232

Contact Person

Contact Person Telephone Number

CJROGERS@UPPERDARBYSD.ORG

(610)789-0796

Contact Person E-mail Address

Contact Person Fax Number

Audit Certification
Annual Financial Report:
For Fiscal Year Ending 6/30/2016
(Pursuant to PA School Code Section 218(b))

LEA Name : Upper Darby SD
AUN Number : 125239452
County : Delaware

Audit Certification Due: 12/31/2016

This certification is applicable to:

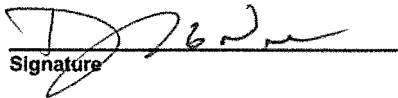
- Orig. Annual Financial Report submitted to
Comptroller Operations: November 3, 2016
Date
- Annual Financial Report revisions submitted on: March 22, 2017
Date

Auditing Firm: Baker, Tilly, Virchow, Krause LLP
1650 Market Street, STE 4500
Philadelphia, PA 19103

Auditor Contact Name: William McGowan
Auditor Phone: 570-820-0199
Auditor E-mail: William.McGowan@bakertilly.com

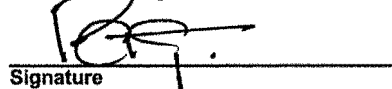
CERTIFICATION: By signing this page I agree that the financial statements of the school have been properly audited as noted above pursuant to Article XXIV, and in the auditor's professional opinion, the Annual Financial Report (PDE-2057) submitted on the date referenced is materially consistent with the audited financial statements.

Chief School Administrator


Signature

March 22, 2017
Date

Board Secretary


Signature

March 22, 2017
Date

CRAIG J ROGERS

Contact Person

CJROGERS@UPPERDARBYSD.ORG

Contact Person E-mail Address

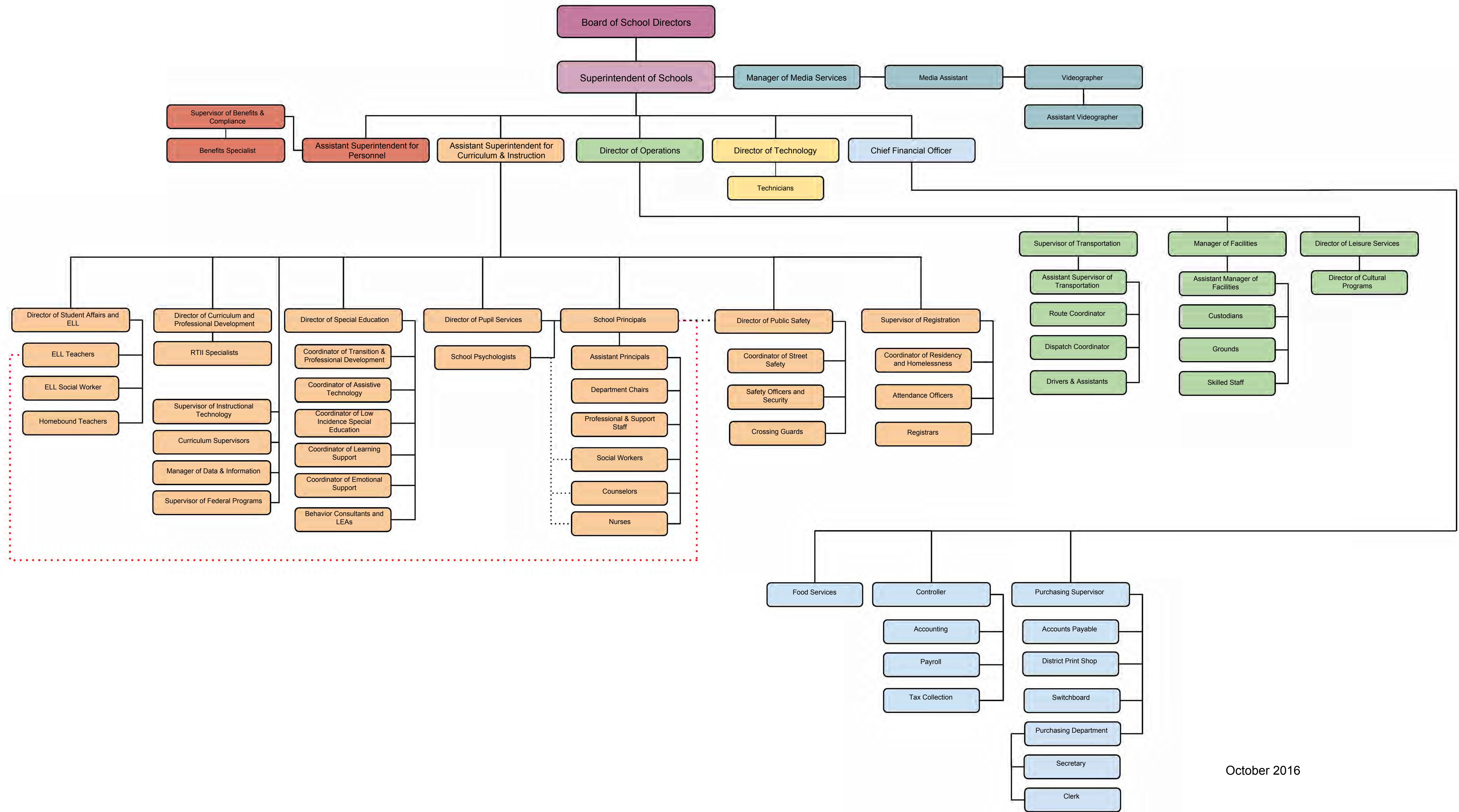
(610)789-7200 Ext :3232

Contact Person Telephone Number

(610)789-0796

Contact Person Fax Number

Upper Darby School District Table of Organization



October 2016

<u>Val Number</u>	<u>Description</u>	<u>Justification</u>
30680	Revenue Detail: Current Tax Revenue amount cannot exceed 30% variance from prior year amount. Correct the data or enter a justification. 6153, Current AFR Rev Detail: \$2,339,635.40 6153, Prior AFR Rev Detail: \$1,346,292.30	2015-16 Transfers Taxes included collections from sales of commercial properties exceeding \$750K
42420	Expenditure Detail: Total current year 2700-513 expenditure varies from prior year by 10%. Correct the data or enter a justification. 2700-513, AFR Exp Detail: \$208,891.60 2700-513, PY AFR Amount: \$51,319.65	District contracted with Life Works to transport special education students to facility in Doylestown. The costs exceeded \$180K.
50170	SOIN: All Governmental Fund Authority Building Obligations must include an amount for Interest Paid during Fiscal Year. Correct data or enter a justification.	ALO - DCCC-2014 BOND ISSUED - NO INTEREST PAID 2015/2016

Amounts Expressed in Whole Dollars

	<u>General Fund</u> <u>(10)</u>	<u>Public Purpose Trust</u> <u>(27)</u>	<u>Other Compt Approved</u> <u>(28)</u>	<u>Athletic / Activity</u> <u>(29)</u>	<u>Capital Reserve (690,</u> <u>1850)</u> <u>(31)</u>
Assets And Deferred Outflows Of Resources					
Assets					
0100 Cash and Cash Equivalents	17,442,954				
0110 Investments	21,075,000				
0120 Taxes Receivable	8,369,224				
0130 Due From Other Funds	518,704				
0141 Due From Other Governments	13,848				
0142 State Revenue Receivable	7,344,449				
0143 Federal Revenue Receivable	814,036				
0145 Other Intergovernmental Revenue Receivable					
0146 Due from Primary Government					
0147 Due from Component Unit					
0150 Other Receivables	299,233				
0170 Inventories	379,548				
0180 Prepaid Expenses (Expenditures)	426,727				
0190 Other Current Assets					
Total Assets	\$56,683,723				
0910 Deferred Outflows of Resources					
Total Assets And Deferred Outflows Of Resources	\$56,683,723				

Amounts Expressed in Whole Dollars	<u>Capital Reserve (1431)</u> <u>(32)</u>	<u>Other Capital Projects</u> <u>Fund</u> <u>(39)</u>	<u>Debt Service</u> <u>(40)</u>	<u>Permanent</u> <u>(90)</u>	<u>Total Governmental</u> <u>Funds</u>
Assets And Deferred Outflows Of Resources					
Assets					
0100 Cash and Cash Equivalents	2,582,391				20,025,345
0110 Investments					21,075,000
0120 Taxes Receivable					8,369,224
0130 Due From Other Funds					518,704
0141 Due From Other Governments					13,848
0142 State Revenue Receivable					7,344,449
0143 Federal Revenue Receivable					814,036
0145 Other Intergovernmental Revenue Receivable					
0146 Due from Primary Government					
0147 Due from Component Unit					
0150 Other Receivables					299,233
0170 Inventories					379,548
0180 Prepaid Expenses (Expenditures)					426,727
0190 Other Current Assets					
Total Assets	\$2,582,391				\$59,266,114
0910 Deferred Outflows of Resources					
Total Assets And Deferred Outflows Of Resources	\$2,582,391				\$59,266,114

Amounts Expressed in Whole Dollars

<u>General Fund</u>	<u>Public Purpose Trust</u>	<u>Other Compt Approved</u>	<u>Athletic / Activity</u>	<u>Capital Reserve (690,</u>
<u>(10)</u>	<u>(27)</u>	<u>(28)</u>	<u>(29)</u>	<u>1850)</u>
				<u>(31)</u>

Liabilities And Deferred Inflows Of Resources And Fund Balances

Liabilities

0400 Due to Other Funds	
0411 Due to Other Governments	
0412 Due to Primary Government	
0413 Due to Component Unit	
0420 Accounts Payable	2,504,659
0430 Contracts Payable	
0440 Current Portion of Long-Term Debt	
0450 Short-Term Payables	
0461 Accrued Salaries and Benefits	11,931,425
0462 Payroll Deductions and Withholding	8,745,154
0480 Unearned Revenues	486,801
0490 Other Current Liabilities	1,269,102

Total Liabilities \$24,937,141

0950 Deferred Inflows of Resources	7,478,519
------------------------------------	-----------

Fund Balances

0810 Nonspendable Fund Balance	379,548
0820 Restricted Fund Balance	
0830 Committed Fund Balance	6,500,000
0840 Assigned Fund Balance	2,266,497
0850 Unassigned Fund Balance	15,122,018

Total Fund Balances \$24,268,063

Total Liabilities, Deferred Inflows Of Resources And Fund Balances \$56,683,723

Amounts Expressed in Whole Dollars

	<u>Capital Reserve (1431)</u> <u>(32)</u>	<u>Other Capital Projects</u> <u>Fund</u> <u>(39)</u>	<u>Debt Service</u> <u>(40)</u>	<u>Permanent</u> <u>(90)</u>	<u>Total Governmental</u> <u>Funds</u>
Liabilities And Deferred Inflows Of Resources And Fund Balances					
Liabilities					
0400 Due to Other Funds					
0411 Due to Other Governments					
0412 Due to Primary Government					
0413 Due to Component Unit					
0420 Accounts Payable	2,390				2,507,049
0430 Contracts Payable					
0440 Current Portion of Long-Term Debt					
0450 Short-Term Payables					
0461 Accrued Salaries and Benefits					11,931,425
0462 Payroll Deductions and Withholding					8,745,154
0480 Unearned Revenues					486,801
0490 Other Current Liabilities					1,269,102
Total Liabilities	\$2,390				\$24,939,531
0950 Deferred Inflows of Resources					7,478,519
Fund Balances					
0810 Nonspendable Fund Balance					379,548
0820 Restricted Fund Balance	2,580,001				2,580,001
0830 Committed Fund Balance					6,500,000
0840 Assigned Fund Balance					2,266,497
0850 Unassigned Fund Balance					15,122,018
Total Fund Balances	\$2,580,001				\$26,848,064
Total Liabilities, Deferred Inflows Of Resources And Fund Balances	\$2,582,391				\$59,266,114

Amounts Expressed in Whole Dollars	<u>General Fund</u> <u>(10)</u>	<u>Public Purpose Trust</u> <u>(27)</u>	<u>Other Compt Approved</u> <u>(28)</u>	<u>Athletic / Activity</u> <u>(29)</u>	<u>Capital Reserve (690,</u> <u>1850)</u> <u>(31)</u>
Revenues					
6000 Revenue from Local Sources	102,973,479				
7000 Revenue from State Sources	70,819,518				
8000 Revenue from Federal Sources	5,837,422				
Total Revenues	\$179,630,419				
Expenditures					
1000 Instruction	121,840,793				
2000 Support Services	47,457,981				
3000 Operation of Non-Instructional Services	4,807,537				
4000 Facilities Acquisition, Construction and Improvement Services	884,705				
5110 Debt Service	6,056,213				
5130 Refund of Prior Year Revenues / Receipts	100				
5140 Short-Term Borrowing – Interest and Costs					
Total Expenditures	\$181,047,329				
Excess (Deficiency) Of Revenues Over Expenditures	(\$1,416,910)				
Other Financing Sources (Uses)					
9110 Face Value of Bonds Issued					
9120 Proceeds from Refunding of Bonds					
9130 Bond Premiums					
9200 Proceeds from Extended-Term Financing	1,800,947				
9300 Interfund Transfers - IN	518,704				
9400 Sale of or Compensation for Loss of Fixed Assets					
9710 Transfers from Component Units					
9720 Transfers from Primary Governments					
9910 Other Financing Sources Not Listed in the 9000 Series					
9990 Insurance Recoveries	219,678				
5120 Debt Service – Refunded Bonds					
5150 Bond Discounts					
5200 Interfund Transfers – Out					
5300 Transfers Out to Component Units/Primary Governments					
Total Other Financing Sources (Uses)	\$2,539,329				

Amounts Expressed in Whole Dollars	<u>Capital Reserve (1431)</u> <u>(32)</u>	<u>Other Capital Projects</u> <u>Fund</u> <u>(39)</u>	<u>Debt Service</u> <u>(40)</u>	<u>Permanent</u> <u>(90)</u>	<u>Total Governmental</u> <u>Funds</u>
Revenues					
6000 Revenue from Local Sources		3,569			102,977,048
7000 Revenue from State Sources					70,819,518
8000 Revenue from Federal Sources					5,837,422
Total Revenues		\$3,569			\$179,633,988
Expenditures					
1000 Instruction					121,840,793
2000 Support Services					47,457,981
3000 Operation of Non-Instructional Services					4,807,537
4000 Facilities Acquisition, Construction and Improvement Services		705,570			1,590,275
5110 Debt Service					6,056,213
5130 Refund of Prior Year Revenues / Receipts					100
5140 Short-Term Borrowing – Interest and Costs					
Total Expenditures		\$705,570			\$181,752,899
Excess (Deficiency) Of Revenues Over Expenditures		(\$702,001)			(\$2,118,911)
Other Financing Sources (Uses)					
9110 Face Value of Bonds Issued					
9120 Proceeds from Refunding of Bonds					
9130 Bond Premiums					
9200 Proceeds from Extended-Term Financing					1,800,947
9300 Interfund Transfers - IN					518,704
9400 Sale of or Compensation for Loss of Fixed Assets					
9710 Transfers from Component Units					
9720 Transfers from Primary Governments					
9910 Other Financing Sources Not Listed in the 9000 Series					
9990 Insurance Recoveries					219,678
5120 Debt Service – Refunded Bonds					
5150 Bond Discounts					
5200 Interfund Transfers – Out					
5300 Transfers Out to Component Units/Primary Governments					
Total Other Financing Sources (Uses)					\$2,539,329

Amounts Expressed in Whole Dollars	<u>General Fund</u> <u>(10)</u>	<u>Public Purpose Trust</u> <u>(27)</u>	<u>Other Compt Approved</u> <u>(28)</u>	<u>Athletic / Activity</u> <u>(29)</u>	<u>Capital Reserve</u> (690, <u>1850</u> <u>(31)</u>
Special And Extraordinary Items					
9920 Special Items – Gains					
9930 Extraordinary Items – Gains					
5520 Special Items – Losses					
5530 Extraordinary Items – Losses					
Net Change In Fund Balances	\$1,122,419				
Fund Balance					
0001 Fund Balance - Beginning of Fiscal Year	23,145,644				
Fund Balance - End Of Year	\$24,268,063				

Amounts Expressed in Whole Dollars	<u>Capital Reserve (1431)</u> <u>(32)</u>	<u>Other Capital Projects</u> <u>Fund</u> <u>(39)</u>	<u>Debt Service</u> <u>(40)</u>	<u>Permanent</u> <u>(90)</u>	<u>Total Governmental</u> <u>Funds</u>
Special And Extraordinary Items					
9920 Special Items – Gains					
9930 Extraordinary Items – Gains					
5520 Special Items – Losses					
5530 Extraordinary Items – Losses					
Net Change In Fund Balances	(\$702,001)				\$420,418
Fund Balance					
0001 Fund Balance - Beginning of Fiscal Year		3,282,002			26,427,646
Fund Balance - End Of Year		\$2,580,001			\$26,848,064

Amounts Expressed in Whole Dollars	<u>Food Service</u> <u>(51)</u>	<u>Child Care</u> <u>Operations</u> <u>(52)</u>	<u>Other Enterprise</u> <u>(58)</u>	<u>TOTAL</u>	<u>Internal Service</u> <u>(60)</u>
Assets And Deferred Outflows Of Resources					
Current Assets					
0100 Cash and Cash Equivalents	2,525,300			2,525,300	
0110 Investments					
0130 Due From Other Funds					
0141 Due From Other Governments					
0142 State Revenue Receivable	8,877			8,877	
0143 Federal Revenue Receivable	172,937			172,937	
0146 Due from Primary Government					
0147 Due from Component Unit					
0150 Other Receivables	436,362			436,362	
0170 Inventories	64,887			64,887	
0180 Prepaid Expenses (Expenditures)					
0190 Other Current Assets					
Total Current Assets	\$3,208,363			\$3,208,363	
Noncurrent Assets					
0211 Land					
0212 Site Improvements (Net)					
0220 Buildings and Building Improvements (Net)					
0230 Machinery, Equipment and Furniture (Net)	254,494			254,494	
0250 Construction in Progress					
0260 Long Term Prepayments					
0290 Other Noncurrent Assets					
Total Noncurrent Assets	\$254,494			\$254,494	
0910 Deferred Outflows of Resources					
Total Assets And Deferred Outflows Of Resources	\$3,462,857			\$3,462,857	

Amounts Expressed in Whole Dollars	<u>Food Service</u> <u>(51)</u>	<u>Child Care</u> <u>Operations</u> <u>(52)</u>	<u>Other Enterprise</u> <u>(58)</u>	<u>TOTAL</u>	<u>Internal Service</u> <u>(60)</u>
Liabilities And Deferred Inflows Of Resources And Net Position					
Current Liabilities					
0400 Due to Other Funds	518,704			518,704	
0411 Due to Other Governments					
0413 Due to Component Unit					
0420 Accounts Payable	418,518			418,518	
0430 Contracts Payable					
0440 Current Portion of Long-Term Debt					
0450 Short-Term Payables					
0461 Accrued Salaries and Benefits					
0462 Payroll Deductions and Withholding					
0480 Unearned Revenues	18,591			18,591	
0490 Other Current Liabilities					
Total Current Liabilities	\$955,813			\$955,813	
Noncurrent Liabilities					
0510 Bonds Payable					
0520 Extended-Term Financing Agreements Payable					
0530 Lease-Purchase Obligations					
0540 Accumulated Compensated Absences					
0550 Authority Lease Obligations					
0560 Other Post-Employment Benefits (OPEB)					
0570 Net Pension Liability					
0599 Other Long-Term Liabilities					
Total Noncurrent Liabilities					
Total Liabilities	\$955,813			\$955,813	
0950 Deferred Inflows of Resources					
Net Position					
0791 Invested in Capital Assets, Net of Related Debt	254,494			254,494	
0008 Restricted Net Position (0792 – 0798)					
0799 Unrestricted Net Position	2,252,550			2,252,550	
Total Net Position	\$2,507,044			\$2,507,044	
Total Liabilities And Deferred Inflows Of Resources And Net Position	\$3,462,857			\$3,462,857	

Amounts Expressed in Whole Dollars	<u>Food Service</u> <u>(51)</u>	<u>Child Care Operations</u> <u>(52)</u>	<u>Other Enterprise</u> <u>(58)</u>	<u>TOTAL</u>	<u>Internal Service</u> <u>(60)</u>
Operating Revenues					
6600 Food Service Revenue	904,958			904,958	
0071 Charges for Services					
0072 Other Operating Revenue					
Total Operating Revenues	\$904,958			\$904,958	
Operating Expenses					
100 Personnel Services – Salaries					
200 Personnel Services – Employee Benefits					
300 Purchased Professional and Technical Services	75			75	
400 Purchased Property Services	4,850			4,850	
500 Other Purchased Services	5,407,574			5,407,574	
600 Supplies	265,858			265,858	
740 Depreciation	44,709			44,709	
810 Dues and Fees					
890 Miscellaneous Expenditures					
Total Operating Expenses	\$5,723,066			\$5,723,066	
Operating Income (Loss)	(\$4,818,108)			(\$4,818,108)	
Non Operating Revenues (Expenses)					
6500 Earnings on Investments	2,919			2,919	
6920 Contributions and Donations from Private Sources					
6930 Gains or Losses on Sale of Fixed Assets					
6991 Refunds of a Prior Year Expenditure					
7000 Revenue from State Sources	264,151			264,151	
8000 Revenue from Federal Sources	5,390,914			5,390,914	
820 Claims and Judgments Against the LEA					
830 Interest					
TOTAL Non Operating Revenues (Expenses)	\$5,657,984			\$5,657,984	
Income (Loss) Before Contributions And Transfers	\$839,876			\$839,876	

Amounts Expressed in Whole Dollars	<u>Food Service</u> <u>(51)</u>	<u>Child Care Operations</u> <u>(52)</u>	<u>Other Enterprise</u> <u>(58)</u>	<u>TOTAL</u>	<u>Internal Service</u> <u>(60)</u>
Contributions, Transfers, and Special and Extraordinary Items					
5200 Interfund Transfers – Out	518,704			518,704	
5300 Transfers Out to Component Units/Primary Governments					
5520 Special Items – Losses					
5530 Extraordinary Items – Losses					
9300 Interfund Transfers - IN					
9500 Capital Contributions					
9700 Transfers IN From Component Units/Primary Governments					
9920 Special Items – Gains					
9930 Extraordinary Items – Gains					
Change In Net Position	\$321,172			\$321,172	
0002 Net Position - Beginning of Fiscal Year	2,185,872			2,185,872	
0003 Accounting Changes / Residual Equity Transfers					
Net Position - End Of Year	\$2,507,044			\$2,507,044	

LEA : 125239452 Upper Darby SD

Printed 3/22/2017 1:08:00 PM

Amounts Expressed in Whole Dollars	<u>Food Service</u> (51)	<u>Child Care Operations</u> (52)	<u>Other Enterprise</u> (58)	<u>TOTAL</u>	<u>Internal Service(60)</u>
Cash Flows From Operating Activities					
0011 Cash Receipts From Users	908,248			908,248	
0012 Cash Receipts From Assessments Made to Other Funds					
0013 Cash Receipts From Earnings on Investments					
0014 Cash Receipts From Other Operating Revenue					
0015 Cash Payments To Employees For Services					
0016 Cash Payments For Insurance Claims					
0017 Cash Payments To Suppliers For Goods and Services	5,883,982			5,883,982	
0018 Cash Payments For Other Operating Expenses					
Net Cash Provided By (Used For) Operating Activities	(\$4,975,734)			(\$4,975,734)	
Cash Flows From Non-Capital Financing Activities					
0021 Receipts From Local Sources - 6000					
0022 Receipts From State Sources - 7000	269,804			269,804	
0023 Receipts From Federal Sources -8000	5,192,613			5,192,613	
0024 Notes and Loans Received (Repaid)					
0025 Interest Paid on Notes/Loans - 5100-830					
0026 Operating Transfers In (Out)/Residual Equity Trans					
0027 Operating Transfers In (Out) Primary Government / Comp Unit	(430,485)			(430,485)	
0028 Receipts From Refund of Prior Year Expenditures - 6991					
0029 Special and Extraordinary Gains (losses)					
Net Cash Prov By (Used for) Non-Capital Financing Activities	\$5,031,932			\$5,031,932	
Cash Flows From Capital and Related Financing Activities					
0031 Payments For Fac Acq, Const, and Imp - 4000	(99,726)			(99,726)	
0032 Gain / (Loss) on Sale of Fixed Assets - 6930					
0033 Proceeds From Extended Term Financing - 9200					
0034 Principal Paid on Financing Agreements					
0035 Interest Paid on Financing Agreements - 5100-830					
0036 (Inc) Dec in Contributed Capital					
Net Cash Prov By (Used for) Capital and Related Financing Activities	(\$99,726)			(\$99,726)	
Cash Flows From Investing Activities					
0041 Earnings on Investments - 6500	2,919			2,919	
0042 Purchase of Inv Securities / Deposits to Inv Pools					
0043 Receipts From Investment Pool Withdrawals					
0044 Proceeds from Sale and Maturity of Inv Securities					
0045 Loans Received (Paid)					
Net Cash Prov By (Used for) Investing Activities	\$2,919			\$2,919	

LEA : 125239452 Upper Darby SD

Printed 3/22/2017 1:08:00 PM

	<u>Food Service</u> <u>(51)</u>	<u>Child Care Operations</u> <u>(52)</u>	<u>Other Enterprise</u> <u>(58)</u>	<u>TOTAL</u>	<u>Internal Service</u> <u>(60)</u>
Net Increase (Decrease) in Cash Flows	(40,609)			(40,609)	
0004 Cash and Cash Equivalents Beginning of Year	2,565,909			2,565,909	
Cash and Cash Equivalents at Year End	\$2,525,300			\$2,525,300	
<hr/>					
Reconciliation of Operating Income (Loss) To Net Cash Provided by (Used For) Operating Activities					
0005 Operating Income (Loss) per REP	(4,818,108)			(4,818,108)	
Adjustments					
0051 Depreciation and Net Amortization	44,709			44,709	
0052 Provision for Uncollectible Accounts					
0053 Other Adjustments	258,235			258,235	
Effect of Changes in Assets, Liabilities, Deferred Outflows and Deferred Inflows					
0054 (Inc) Dec In Accounts Receivable (0120-0150)	(433,371)			(433,371)	
0055 Advances to Other Funds (0160)					
0056 (Inc) Dec in Inventories (0170)					
0057 (Inc) Dec in Prepaid Expenses (0180)					
0058 (Inc) Dec in Other Current or Noncurrent Assets					
0064 Deferred Outflows (0910)					
0059 Inc (Dec) in Accounts Payable (0400-0450)	(30,218)			(30,218)	
0060 Inc (Dec) in Accrued Salaries/Benefits (0461)					
0065 Inc (Dec) in Net Pension Liabilities (0570)					
0066 Inc (Dec) in Other Postemp Benefit Oblig (0560)					
0061 Inc (Dec) in Payroll Deductions/Withholding (0462)					
0062 Inc (Dec) in Unearned Revenue (0480)	3,019			3,019	
0063 Inc (Dec) in Other Current or Noncurrent Liabilities					
0067 Deferred Inflows (0950)					
Total Adjustments	(\$157,626)			(\$157,626)	
Cash Provided By (Used for) Total	(\$4,975,734)			(\$4,975,734)	

COMBINED STATEMENT OF CASH FLOWS
SCHEDULE OF NONCASH INVESTING, CAPITAL, AND FINANCING ACTIVITIES

Explanation of Transaction and Balance Sheet Effect	Amount
USDA DONATED COMMODITIES	258,235
Total	\$258,235

LEA : 125239452 Upper Darby SD

Printed 3/22/2017 1:08:00 PM

Amounts Expressed in Whole Dollars	<u>Private Purpose Trust</u> <u>(71)</u>	<u>Investment Trust</u> <u>(72)</u>	<u>Pension Trust</u> <u>(73)</u>	<u>Activity</u> <u>(81)</u>
Assets And Deferred Outflows Of Resources				
Assets				
0100 Cash and Cash Equivalents	708,064			294,393
0110 Investments				
0130 Due From Other Funds				
0147 Due from Component Unit				
0150 Other Receivables				
0170 Inventories				
0180 Prepaid Expenses (Expenditures)				
0190 Other Current Assets				
0220 Buildings and Building Improvements (Net)				
0230 Machinery, Equipment and Furniture (Net)				
Total Assets	\$708,064			\$294,393
0910 Deferred Outflows of Resources				
Total Assets And Deferred Outflows Of Resources	\$708,064			\$294,393

LEA : 125239452 Upper Darby SD

Printed 3/22/2017 1:08:00 PM

Amounts Expressed in Whole Dollars

	<u>Other Agency</u> <u>(89)</u>	<u>Discrete Component Units</u> <u>(98)</u>	<u>Discrete Component Units</u> <u>(99)</u>	<u>Total Fiduciary Funds</u>
Assets And Deferred Outflows Of Resources				
Assets				
0100 Cash and Cash Equivalents	255,413			1,257,870
0110 Investments				
0130 Due From Other Funds				
0147 Due from Component Unit				
0150 Other Receivables				
0170 Inventories				
0180 Prepaid Expenses (Expenditures)				
0190 Other Current Assets				
0220 Buildings and Building Improvements (Net)				
0230 Machinery, Equipment and Furniture (Net)				
Total Assets	\$255,413			\$1,257,870
0910 Deferred Outflows of Resources				
Total Assets And Deferred Outflows Of Resources	\$255,413			\$1,257,870

LEA : 125239452 Upper Darby SD

Printed 3/22/2017 1:08:00 PM

Amounts Expressed in Whole Dollars

	<u>Private Purpose Trust</u> (71)	<u>Investment Trust</u> (72)	<u>Pension Trust</u> (73)	<u>Activity</u> (81)
Liabilities, Deferred Inflows Of Resources And Net Position				
Liabilities				
0400 Due to Other Funds				
0411 Due to Other Governments				
0412 Due to Primary Government				
0413 Due to Component Unit				
0420 Accounts Payable				
0430 Contracts Payable				
0450 Short-Term Payables				
0461 Accrued Salaries and Benefits				
0462 Payroll Deductions and Withholding				
0480 Unearned Revenues				
0490 Other Current Liabilities				294,393
Total Liabilities				\$294,393
0950 Deferred Inflows of Resources				
Net Position				
0791 Invested in Capital Assets, Net of Related Debt				
0009 Restricted Net Position (0792 – 0798)	708,064			
0799 Unrestricted Net Position				
Total Net Position	\$708,064			
Total Liabilities, Deferred Inflows Of Resources And Net Position	\$708,064			\$294,393

LEA : 125239452 Upper Darby SD

Printed 3/22/2017 1:08:00 PM

Amounts Expressed in Whole Dollars

	<u>Other Agency</u> <u>(89)</u>	<u>Discrete Component Units</u> <u>(98)</u>	<u>Discrete Component Units</u> <u>(99)</u>	<u>Total Fiduciary Funds</u>
Liabilities, Deferred Inflows Of Resources And Net Position				
Liabilities				
0400 Due to Other Funds				
0411 Due to Other Governments				
0412 Due to Primary Government				
0413 Due to Component Unit				
0420 Accounts Payable				
0430 Contracts Payable				
0450 Short-Term Payables				
0461 Accrued Salaries and Benefits				
0462 Payroll Deductions and Withholding				
0480 Unearned Revenues				
0490 Other Current Liabilities	255,413			549,806
Total Liabilities	\$255,413			\$549,806
0950 Deferred Inflows of Resources				
Net Position				
0791 Invested in Capital Assets, Net of Related Debt				
0009 Restricted Net Position (0792 – 0798)				708,064
0799 Unrestricted Net Position				
Total Net Position				\$708,064
Total Liabilities, Deferred Inflows Of Resources And Net Position	\$255,413			\$1,257,870

Amounts Expressed in Whole Dollars	<u>Private Purpose Trust</u> <u>(71)</u>	<u>Investment Trust</u> <u>(72)</u>	<u>Pension Trust</u> <u>(73)</u>	<u>Discrete Component</u> <u>Units</u> <u>(98)</u>	<u>Discrete Component</u> <u>Units</u> <u>(99)</u>	<u>Total Fiduciary</u> <u>Funds</u>
Additions						
0091 Gifts and Contributions	224,522					224,522
0092 Other Additions	1,384					1,384
Deductions						
0093 Scholarships Awarded	229,828					229,828
0094 Other Deductions						
Change In Net Position	(\$3,922)					(\$3,922)
0006 Net Position – Beginning of Fiscal Year	711,986					711,986
0007 Net Position Held in Trust for Pension Benefits						
Net Position - End of Fiscal Year	\$708,064					\$708,064

	<u>Revenue Reported In Current Year</u>	<u>Current Year Tax Accrual</u>	<u>Prior Year Tax Accrual</u>	<u>Taxes Collected In Current Year</u>
<u>Revenue from Local Sources</u>				
6111 Current Real Estate Taxes	90,684,113.45	(235,936.53)		90,920,049.98
6112 Interim Real Estate Taxes	81,503.67	16,674.62	12,517.67	77,346.72
6113 Public Utility Realty Taxes	110,787.71			110,787.71
6153 Current Act 511 Real Estate Transfer Taxes	2,450,178.88	236,881.55	126,338.07	2,339,635.40
6411 Delinquent Real Estate Taxes	5,136,634.08	634,926.77	661,421.32	5,163,128.63
6500 Earnings on Investments	163,068.24			
6700 Revenues from LEA Activities	59,079.36			
6831 Federal Revenue Received from Other Pennsylvania Public LEAs	9,961.00			
6832 Federal IDEA Revenue Received as Pass Through	1,796,216.00			
6910 Rentals	27,500.00			
6920 Contributions and Donations from Private Sources	615,361.39			
6942 Summer School Tuition	64,120.00			
6944 Receipts from Other LEAs in Pennsylvania - Education	25,914.40			
6980 Revenue from Community Services Activities	1,454,661.47			
6991 Refunds of a Prior Year Expenditure	32,816.15			
6999 Other Revenues Not Specified Above	261,563.45			
TOTAL Revenue from Local Sources	\$102,973,479.25	\$652,546.41	\$800,277.06	\$98,610,948.44

**Revenue Reported
In Current Year**

Revenue from State Sources

7110 Basic Education Funding	35,072,151.74
7160 Tuition for Orphans Subsidy	347,504.28
7271 Special Education funds for School-Aged Pupils	7,624,546.99
7311 Pupil Transportation Subsidy	2,218,540.73
7312 Nonpublic and Charter School Pupil Transportation Subsidy	539,770.00
7320 Rental and Sinking Fund Payments / Building Reimbursement Subsidy	1,217,712.40
7330 Health Services (Medical, Dental, Nurse, Act 25)	272,426.05
7340 State Property Tax Reduction Allocation	5,142,166.66
7505 Ready to Learn Block Grant	2,073,956.00
7810 State Share of Social Security and Medicare Taxes	3,527,414.41
7820 State Share of Retirement Contributions	12,783,328.34
TOTAL Revenue from State Sources	\$70,819,517.60

**Revenue Reported
In Current Year**

Revenue from Federal Sources

8514 NCLB, Title I - Improving the Academic Achievement of the Disadvantaged	4,252,242.75
8515 NCLB, Title II - Preparing, Training and Recruiting High Quality Teachers and Principals	461,923.09
8516 NCLB, Title III - Language Instruction for Limited English Proficient and Immigrant Students	343,306.42
8732 ARRA - Qualified School Construction Bonds (QSCB)	246,296.93
8810 School-Based Access Medicaid Reimbursement Program (SBAP) Reimbursements (Access)	444,072.54
8820 Medical Assistance Reimbursement for Administrative Claiming (Quarterly) Program	89,579.97
TOTAL Revenue from Federal Sources	\$5,837,421.70

	<u>Revenue Reported In Current Year</u>			
<u>Other Financing Sources</u>				
9290 Other Extended-Term Financing Proceeds	1,800,946.52			
9350 Enterprise Fund Transfers	518,704.01			
9990 Insurance Recoveries	219,678.13			
TOTAL Other Financing Sources	\$2,539,328.66			
TOTAL FROM ALL SOURCES	\$182,169,747.21	\$652,546.41	\$800,277.06	\$98,610,948.44

Revenue from Local Sources	102,973,479.25
Revenue from State Sources	70,819,517.60
Revenue from Federal Sources	5,837,421.70
Other Financing Sources	2,539,328.66
TOTAL FROM ALL SOURCES	\$182,169,747.21

LEA : 125239452 Upper Darby SD

Printed 3/22/2017 1:08:03 PM

General Fund (10)

	<u>Total</u>
1000 Instruction	
100 Personnel Services – Salaries	
100 Personnel Services – Salaries	55,413,744.95
Total Personnel Services – Salaries	\$55,413,744.95
200 Personnel Services – Employee Benefits	
210 Group Insurance – Contracted Provider	15,130,992.05
220 Social Security Contributions	4,134,941.49
230 PSERS Retirement Contributions	14,240,067.37
250 Unemployment Compensation	17,634.53
260 Workers’ Compensation	530,886.00
290 Other Current Employee Benefits	165,000.00
Total Personnel Services – Employee Benefits	\$34,219,521.44
300 Purchased Professional and Technical Services	
322 Professional Educational Services – Ius	4,452,818.47
329 Professional Educational Services – Other	5,307,373.64
330 Other Professional Services	1,375,920.71
390 Other Purchased Professional and Technical Services	1,752.30
Total Purchased Professional and Technical Services	\$11,137,865.12
400 Purchased Property Services	
430 Repairs and Maintenance Services	241,792.21
440 Rentals	51,533.16
Total Purchased Property Services	\$293,325.37
500 Other Purchased Services	
510 Student Transportation Services	3,982.50
520 Insurance – General	2,825.00
530 Communications	38,918.89
550 Printing and Binding	118,843.04
561 Tuition To Other School Districts Within the State	107,405.10
562 Tuition To Pennsylvania Charter Schools	6,428,132.16
563 Tuition To Nonpublic Schools	6,301,860.67
564 Tuition To Career and Technology Centers	1,334,332.12
566 Tuition To Institutions of Higher Education and Technical Institutes	829,840.00
567 Tuition To Approved Private Schools (APS) and PA Chartered Schools for the Deaf and Blind	2,042,392.31
568 Tuition To Private Residential Rehabilitative Institutions (PRRI) [In-State] and Detention Centers	761,131.52
580 Travel	9,364.63
Total Other Purchased Services	\$17,979,027.94
600 Supplies	
610 General Supplies	619,510.10
640 Books and Periodicals	957,619.63
Total Supplies	\$1,577,129.73
700 Property	
750 Equipment – Original and Additional	452,377.13
760 Equipment – Replacement	387,244.79
Total Property	\$839,621.92

LEA : 125239452 Upper Darby SD

Printed 3/22/2017 1:08:03 PM

General Fund (10)

1000 Instruction	<u>Total</u>
800 Other Objects	
820 Claims and Judgments Against the LEA	378,106.46
890 Miscellaneous Expenditures	2,450.27
Total Other Objects	\$380,556.73
Total 1000 Instruction	\$121,840,793.20

General Fund (10)

1100 Regular Programs – Elementary / Secondary

	<u>Elementary</u>	<u>Secondary</u>	<u>Federal</u>	<u>Total</u>
100 Personnel Services – Salaries				
100 Personnel Services – Salaries	22,488,606.25	19,112,598.98	2,637,022.74	44,238,227.97
Total Personnel Services – Salaries	\$22,488,606.25	\$19,112,598.98	\$2,637,022.74	\$44,238,227.97
200 Personnel Services – Employee Benefits				
210 Group Insurance – Contracted Provider	5,658,239.60	4,990,195.68	555,356.77	11,203,792.05
220 Social Security Contributions	1,679,624.01	1,424,372.52	197,021.84	3,301,018.37
230 PSERS Retirement Contributions	6,017,459.64	5,016,945.73	338,485.14	11,372,890.51
250 Unemployment Compensation	6,440.25	2,658.32		9,098.57
260 Workers' Compensation	218,342.00	184,946.00	21,833.00	425,121.00
290 Other Current Employee Benefits	75,000.00	75,000.00		150,000.00
Total Personnel Services – Employee Benefits	\$13,655,105.50	\$11,694,118.25	\$1,112,696.75	\$26,461,920.50
300 Purchased Professional and Technical Services				
329 Professional Educational Services – Other	566,790.69	438,636.12		1,005,426.81
Total Purchased Professional and Technical Services	\$566,790.69	\$438,636.12		\$1,005,426.81
400 Purchased Property Services				
430 Repairs and Maintenance Services	110,619.35	127,297.01		237,916.36
440 Rentals		51,533.16		51,533.16
Total Purchased Property Services	\$110,619.35	\$178,830.17		\$289,449.52
500 Other Purchased Services				
520 Insurance – General		2,825.00		2,825.00
530 Communications	31,128.94	7,789.95		38,918.89
550 Printing and Binding	91,633.32	25,456.37		117,089.69
562 Tuition To Pennsylvania Charter Schools	2,820,312.39	1,728,974.87		4,549,287.26
Total Other Purchased Services	\$2,943,074.65	\$1,765,046.19		\$4,708,120.84
600 Supplies				
610 General Supplies	234,282.29	269,912.44	13,699.00	517,893.73
640 Books and Periodicals	405,302.63	437,767.98	26,552.22	869,622.83
Total Supplies	\$639,584.92	\$707,680.42	\$40,251.22	\$1,387,516.56
700 Property				
750 Equipment – Original and Additional	124,979.42	310,906.82		435,886.24
760 Equipment – Replacement	198,014.75	154,006.95		352,021.70
Total Property	\$322,994.17	\$464,913.77		\$787,907.94
Total 1100 Regular Programs – Elementary / Secondary	\$40,726,775.53	\$34,361,823.90	\$3,789,970.71	\$78,878,570.14

General Fund (10)

1110 Regular Programs

	<u>Elementary</u>	<u>Secondary</u>	<u>Federal</u>	<u>Total</u>
100 Personnel Services – Salaries				
100 Personnel Services – Salaries	22,488,606.25	19,112,598.98		41,601,205.23
Total Personnel Services – Salaries	\$22,488,606.25	\$19,112,598.98		\$41,601,205.23
200 Personnel Services – Employee Benefits				
210 Group Insurance – Contracted Provider	5,658,239.60	4,990,195.68		10,648,435.28
220 Social Security Contributions	1,679,624.01	1,424,372.52		3,103,996.53
230 PSERS Retirement Contributions	6,017,459.64	5,016,945.73		11,034,405.37
250 Unemployment Compensation	6,440.25	2,658.32		9,098.57
260 Workers' Compensation	218,342.00	184,946.00		403,288.00
290 Other Current Employee Benefits	75,000.00	75,000.00		150,000.00
Total Personnel Services – Employee Benefits	\$13,655,105.50	\$11,694,118.25		\$25,349,223.75
300 Purchased Professional and Technical Services				
329 Professional Educational Services – Other	566,790.69	438,636.12		1,005,426.81
Total Purchased Professional and Technical Services	\$566,790.69	\$438,636.12		\$1,005,426.81
400 Purchased Property Services				
430 Repairs and Maintenance Services	110,619.35	127,297.01		237,916.36
440 Rentals		51,533.16		51,533.16
Total Purchased Property Services	\$110,619.35	\$178,830.17		\$289,449.52
500 Other Purchased Services				
520 Insurance – General		2,825.00		2,825.00
530 Communications	31,128.94	7,789.95		38,918.89
550 Printing and Binding	91,633.32	25,456.37		117,089.69
562 Tuition To Pennsylvania Charter Schools	2,820,312.39	1,728,974.87		4,549,287.26
Total Other Purchased Services	\$2,943,074.65	\$1,765,046.19		\$4,708,120.84
600 Supplies				
610 General Supplies	234,282.29	269,912.44		504,194.73
640 Books and Periodicals	405,302.63	437,767.98		843,070.61
Total Supplies	\$639,584.92	\$707,680.42		\$1,347,265.34
700 Property				
750 Equipment – Original and Additional	124,979.42	310,906.82		435,886.24
760 Equipment – Replacement	198,014.75	154,006.95		352,021.70
Total Property	\$322,994.17	\$464,913.77		\$787,907.94
Total 1110 Regular Programs	\$40,726,775.53	\$34,361,823.90		\$75,088,599.43

General Fund (10)

1190 Federally-Funded Regular Programs

100 Personnel Services – Salaries

100 Personnel Services – Salaries

Total Personnel Services – Salaries

200 Personnel Services – Employee Benefits

210 Group Insurance – Contracted Provider

220 Social Security Contributions

230 PSERS Retirement Contributions

260 Workers' Compensation

Total Personnel Services – Employee Benefits

600 Supplies

610 General Supplies

640 Books and Periodicals

Total Supplies

Total 1190 Federally-Funded Regular Programs

	<u>Elementary</u>	<u>Secondary</u>	<u>Federal</u>	<u>Total</u>
			2,637,022.74	2,637,022.74
Total Personnel Services – Salaries			\$2,637,022.74	\$2,637,022.74
			555,356.77	555,356.77
			197,021.84	197,021.84
			338,485.14	338,485.14
			21,833.00	21,833.00
Total Personnel Services – Employee Benefits			\$1,112,696.75	\$1,112,696.75
			13,699.00	13,699.00
			26,552.22	26,552.22
Total Supplies			\$40,251.22	\$40,251.22
Total 1190 Federally-Funded Regular Programs			\$3,789,970.71	\$3,789,970.71

General Fund (10)

	<u>Elementary</u>	<u>Secondary</u>	<u>Federal</u>	<u>Total</u>
1200 Special Programs – Elementary / Secondary				
100 Personnel Services – Salaries				
100 Personnel Services – Salaries	6,357,520.50	4,106,026.71	70.00	10,463,617.21
Total Personnel Services – Salaries	\$6,357,520.50	\$4,106,026.71	\$70.00	\$10,463,617.21
200 Personnel Services – Employee Benefits				
210 Group Insurance – Contracted Provider	2,479,739.00	1,370,954.00		3,850,693.00
220 Social Security Contributions	474,475.04	306,017.50	5.36	780,497.90
230 PSERS Retirement Contributions	1,628,760.73	1,059,251.54	7.49	2,688,019.76
250 Unemployment Compensation	8,535.96			8,535.96
260 Workers' Compensation	60,525.00	38,933.00		99,458.00
290 Other Current Employee Benefits	15,000.00			15,000.00
Total Personnel Services – Employee Benefits	\$4,667,035.73	\$2,775,156.04	\$12.85	\$7,442,204.62
300 Purchased Professional and Technical Services				
322 Professional Educational Services – Ius	1,733,449.83	1,096,789.92	1,527,834.50	4,358,074.25
329 Professional Educational Services – Other	2,860,097.76	1,219,066.70	13,164.00	4,092,328.46
330 Other Professional Services	1,150,296.56	225,624.15		1,375,920.71
Total Purchased Professional and Technical Services	\$5,743,844.15	\$2,541,480.77	\$1,540,998.50	\$9,826,323.42
400 Purchased Property Services				
430 Repairs and Maintenance Services		2,846.76	85.00	2,931.76
Total Purchased Property Services		\$2,846.76	\$85.00	\$2,931.76
500 Other Purchased Services				
550 Printing and Binding	1,702.68	50.67		1,753.35
562 Tuition To Pennsylvania Charter Schools	617,566.20	1,261,278.70		1,878,844.90
563 Tuition To Nonpublic Schools	2,396,682.50	3,411,199.67	493,978.50	6,301,860.67
567 Tuition To Approved Private Schools (APS) and PA Chartered Schools for the Deaf and Blind	1,021,196.16	1,021,196.15		2,042,392.31
580 Travel	7,035.80	2,328.83		9,364.63
Total Other Purchased Services	\$4,044,183.34	\$5,696,054.02	\$493,978.50	\$10,234,215.86
600 Supplies				
610 General Supplies	11,173.14	4,569.54	74,485.43	90,228.11
640 Books and Periodicals	9,951.12	17,570.48	60,475.20	87,996.80
Total Supplies	\$21,124.26	\$22,140.02	\$134,960.63	\$178,224.91
700 Property				
750 Equipment – Original and Additional	4,961.37	2,527.55	9,001.97	16,490.89
760 Equipment – Replacement	568.43	1,117.43	26,057.23	27,743.09
Total Property	\$5,529.80	\$3,644.98	\$35,059.20	\$44,233.98
800 Other Objects				
820 Claims and Judgments Against the LEA	279,655.53	98,450.93		378,106.46
890 Miscellaneous Expenditures		505.97	1,944.30	2,450.27
Total Other Objects	\$279,655.53	\$98,956.90	\$1,944.30	\$380,556.73
Total 1200 Special Programs – Elementary / Secondary	\$21,118,893.31	\$15,246,306.20	\$2,207,108.98	\$38,572,308.49

LEA : 125239452 Upper Darby SD

Printed 3/22/2017 1:08:03 PM

General Fund (10)

1210 Life Skills Support

	<u>Elementary</u>	<u>Secondary</u>	<u>Federal</u>	<u>Total</u>
100 Personnel Services – Salaries				
100 Personnel Services – Salaries	558,832.94	308,136.77		866,969.71
Total Personnel Services – Salaries	\$558,832.94	\$308,136.77		\$866,969.71
200 Personnel Services – Employee Benefits				
210 Group Insurance – Contracted Provider	228,955.00	137,658.00		366,613.00
220 Social Security Contributions	41,533.67	22,797.28		64,330.95
230 PSERS Retirement Contributions	143,270.10	79,622.66		222,892.76
260 Workers' Compensation	5,304.00	2,903.00		8,207.00
Total Personnel Services – Employee Benefits	\$419,062.77	\$242,980.94		\$662,043.71
300 Purchased Professional and Technical Services				
322 Professional Educational Services – Ius	3,725.00	19,776.58		23,501.58
329 Professional Educational Services – Other	261,133.34	133,224.38		394,357.72
330 Other Professional Services	49,858.85	40,993.75		90,852.60
Total Purchased Professional and Technical Services	\$314,717.19	\$193,994.71		\$508,711.90
500 Other Purchased Services				
563 Tuition To Nonpublic Schools	10,710.96	159,860.46	14,033.00	184,604.42
Total Other Purchased Services	\$10,710.96	\$159,860.46	\$14,033.00	\$184,604.42
600 Supplies				
610 General Supplies		41.64	7,232.08	7,273.72
640 Books and Periodicals			12,175.95	12,175.95
Total Supplies		\$41.64	\$19,408.03	\$19,449.67
700 Property				
750 Equipment – Original and Additional		831.47	4,495.00	5,326.47
760 Equipment – Replacement		549.00	552.23	1,101.23
Total Property		\$1,380.47	\$5,047.23	\$6,427.70
800 Other Objects				
890 Miscellaneous Expenditures			430.56	430.56
Total Other Objects			\$430.56	\$430.56
Total 1210 Life Skills Support	\$1,303,323.86	\$906,394.99	\$38,918.82	\$2,248,637.67

LEA : 125239452 Upper Darby SD

Printed 3/22/2017 1:08:03 PM

General Fund (10)

	<u>Elementary</u>	<u>Secondary</u>	<u>Federal</u>	<u>Total</u>
1220 Sensory Support				
100 Personnel Services – Salaries				
100 Personnel Services – Salaries	753,342.79	54,697.80		808,040.59
Total Personnel Services – Salaries	\$753,342.79	\$54,697.80		\$808,040.59
200 Personnel Services – Employee Benefits				
210 Group Insurance – Contracted Provider	242,098.00	12,287.00		254,385.00
220 Social Security Contributions	56,262.85	4,058.49		60,321.34
230 PSERS Retirement Contributions	194,664.14	14,133.77		208,797.91
260 Workers' Compensation	7,212.00	491.00		7,703.00
Total Personnel Services – Employee Benefits	\$500,236.99	\$30,970.26		\$531,207.25
300 Purchased Professional and Technical Services				
329 Professional Educational Services – Other	78,623.96	107,202.75		185,826.71
330 Other Professional Services	8,341.25	3,730.00		12,071.25
Total Purchased Professional and Technical Services	\$86,965.21	\$110,932.75		\$197,897.96
400 Purchased Property Services				
430 Repairs and Maintenance Services			85.00	85.00
Total Purchased Property Services			\$85.00	\$85.00
500 Other Purchased Services				
563 Tuition To Nonpublic Schools	153,272.56	54,743.97		208,016.53
Total Other Purchased Services	\$153,272.56	\$54,743.97		\$208,016.53
600 Supplies				
610 General Supplies			18,743.43	18,743.43
Total Supplies			\$18,743.43	\$18,743.43
700 Property				
750 Equipment – Original and Additional			2,138.00	2,138.00
760 Equipment – Replacement			2,295.00	2,295.00
Total Property			\$4,433.00	\$4,433.00
Total 1220 Sensory Support	\$1,493,817.55	\$251,344.78	\$23,261.43	\$1,768,423.76

LEA : 125239452 Upper Darby SD

Printed 3/22/2017 1:08:03 PM

General Fund (10)

1230 Emotional Support

	<u>Elementary</u>	<u>Secondary</u>	<u>Federal</u>	<u>Total</u>
100 Personnel Services – Salaries				
100 Personnel Services – Salaries	1,173,315.81	607,046.60		1,780,362.41
Total Personnel Services – Salaries	\$1,173,315.81	\$607,046.60		\$1,780,362.41
200 Personnel Services – Employee Benefits				
210 Group Insurance – Contracted Provider	763,371.00	260,242.00		1,023,613.00
220 Social Security Contributions	87,087.63	45,253.19		132,340.82
230 PSERS Retirement Contributions	301,892.80	156,236.54		458,129.34
260 Workers' Compensation	11,128.00	5,611.00		16,739.00
Total Personnel Services – Employee Benefits	\$1,163,479.43	\$467,342.73		\$1,630,822.16
300 Purchased Professional and Technical Services				
322 Professional Educational Services – Ius	22,350.00	33,468.98		55,818.98
329 Professional Educational Services – Other	1,348,183.07	577,376.33	10,123.00	1,935,682.40
330 Other Professional Services	798,096.50	22,160.50		820,257.00
Total Purchased Professional and Technical Services	\$2,168,629.57	\$633,005.81	\$10,123.00	\$2,811,758.38
500 Other Purchased Services				
563 Tuition To Nonpublic Schools	1,834,719.20	2,177,600.10	439,027.10	4,451,346.40
Total Other Purchased Services	\$1,834,719.20	\$2,177,600.10	\$439,027.10	\$4,451,346.40
600 Supplies				
610 General Supplies			13,376.35	13,376.35
640 Books and Periodicals			4,074.59	4,074.59
Total Supplies			\$17,450.94	\$17,450.94
700 Property				
750 Equipment – Original and Additional	3,391.92	1,696.08	2,368.97	7,456.97
760 Equipment – Replacement			21,961.00	21,961.00
Total Property	\$3,391.92	\$1,696.08	\$24,329.97	\$29,417.97
800 Other Objects				
820 Claims and Judgments Against the LEA	3,394.78	4,575.43		7,970.21
890 Miscellaneous Expenditures			1,513.74	1,513.74
Total Other Objects	\$3,394.78	\$4,575.43	\$1,513.74	\$9,483.95
Total 1230 Emotional Support	\$6,346,930.71	\$3,891,266.75	\$492,444.75	\$10,730,642.21

General Fund (10)

	<u>Elementary</u>	<u>Secondary</u>	<u>Federal</u>	<u>Total</u>
1240 Academic Support				
100 Personnel Services – Salaries				
100 Personnel Services – Salaries	3,036,747.41	2,832,021.99	70.00	5,868,839.40
Total Personnel Services – Salaries	\$3,036,747.41	\$2,832,021.99	\$70.00	\$5,868,839.40
200 Personnel Services – Employee Benefits				
210 Group Insurance – Contracted Provider	1,115,197.00	891,798.00		2,006,995.00
220 Social Security Contributions	226,689.77	211,295.71	5.36	437,990.84
230 PSERS Retirement Contributions	780,368.45	730,673.34	7.49	1,511,049.28
260 Workers' Compensation	28,887.00	27,057.00		55,944.00
Total Personnel Services – Employee Benefits	\$2,151,142.22	\$1,860,824.05	\$12.85	\$4,011,979.12
300 Purchased Professional and Technical Services				
322 Professional Educational Services – Ius	3,725.00	3,725.00		7,450.00
329 Professional Educational Services – Other	439,768.61	171,027.72	3,041.00	613,837.33
330 Other Professional Services	4,375.00	7,860.00		12,235.00
Total Purchased Professional and Technical Services	\$447,868.61	\$182,612.72	\$3,041.00	\$633,522.33
500 Other Purchased Services				
563 Tuition To Nonpublic Schools	165,537.89	703,181.83	5,182.60	873,902.32
Total Other Purchased Services	\$165,537.89	\$703,181.83	\$5,182.60	\$873,902.32
600 Supplies				
610 General Supplies	976.31	1,570.26	10,169.98	12,716.55
640 Books and Periodicals	1,550.00	768.24	2,196.89	4,515.13
Total Supplies	\$2,526.31	\$2,338.50	\$12,366.87	\$17,231.68
700 Property				
760 Equipment – Replacement			1,249.00	1,249.00
Total Property			\$1,249.00	\$1,249.00
800 Other Objects				
820 Claims and Judgments Against the LEA	232,416.75	73,438.00		305,854.75
890 Miscellaneous Expenditures		505.97		505.97
Total Other Objects	\$232,416.75	\$73,943.97		\$306,360.72
Total 1240 Academic Support	\$6,036,239.19	\$5,654,923.06	\$21,922.32	\$11,713,084.57

LEA : 125239452 Upper Darby SD

Printed 3/22/2017 1:08:03 PM

General Fund (10)

	<u>Elementary</u>	<u>Secondary</u>	<u>Federal</u>	<u>Total</u>
1241 Learning Support – Public				
100 Personnel Services – Salaries				
100 Personnel Services – Salaries	2,860,026.91	2,650,890.20	70.00	5,510,987.11
Total Personnel Services – Salaries	\$2,860,026.91	\$2,650,890.20	\$70.00	\$5,510,987.11
200 Personnel Services – Employee Benefits				
210 Group Insurance – Contracted Provider	1,084,479.00	845,723.00		1,930,202.00
220 Social Security Contributions	213,317.86	197,694.91	5.36	411,018.13
230 PSERS Retirement Contributions	738,540.98	683,869.08	7.49	1,422,417.55
260 Workers' Compensation	27,332.00	25,317.00		52,649.00
Total Personnel Services – Employee Benefits	\$2,063,669.84	\$1,752,603.99	\$12.85	\$3,816,286.68
300 Purchased Professional and Technical Services				
322 Professional Educational Services – Ius	3,725.00	3,725.00		7,450.00
329 Professional Educational Services – Other	439,768.61	171,027.72	3,041.00	613,837.33
330 Other Professional Services	4,375.00	7,860.00		12,235.00
Total Purchased Professional and Technical Services	\$447,868.61	\$182,612.72	\$3,041.00	\$633,522.33
500 Other Purchased Services				
563 Tuition To Nonpublic Schools	155,115.89	703,181.83	5,182.60	863,480.32
Total Other Purchased Services	\$155,115.89	\$703,181.83	\$5,182.60	\$863,480.32
600 Supplies				
610 General Supplies			10,169.98	10,169.98
640 Books and Periodicals			2,196.89	2,196.89
Total Supplies			\$12,366.87	\$12,366.87
700 Property				
760 Equipment – Replacement			1,249.00	1,249.00
Total Property			\$1,249.00	\$1,249.00
800 Other Objects				
820 Claims and Judgments Against the LEA	232,416.75	73,438.00		305,854.75
890 Miscellaneous Expenditures		50.97		50.97
Total Other Objects	\$232,416.75	\$73,488.97		\$305,905.72
Total 1241 Learning Support – Public	\$5,759,098.00	\$5,362,777.71	\$21,922.32	\$11,143,798.03

General Fund (10)

	<u>Elementary</u>	<u>Secondary</u>	<u>Federal</u>	<u>Total</u>
1243 Gifted Support				
100 Personnel Services – Salaries				
100 Personnel Services – Salaries	176,720.50	181,131.79		357,852.29
Total Personnel Services – Salaries	\$176,720.50	\$181,131.79		\$357,852.29
200 Personnel Services – Employee Benefits				
210 Group Insurance – Contracted Provider	30,718.00	46,075.00		76,793.00
220 Social Security Contributions	13,371.91	13,600.80		26,972.71
230 PSERS Retirement Contributions	41,827.47	46,804.26		88,631.73
260 Workers' Compensation	1,555.00	1,740.00		3,295.00
Total Personnel Services – Employee Benefits	\$87,472.38	\$108,220.06		\$195,692.44
500 Other Purchased Services				
563 Tuition To Nonpublic Schools	10,422.00			10,422.00
Total Other Purchased Services	\$10,422.00			\$10,422.00
600 Supplies				
610 General Supplies	976.31	1,570.26		2,546.57
640 Books and Periodicals	1,550.00	768.24		2,318.24
Total Supplies	\$2,526.31	\$2,338.50		\$4,864.81
800 Other Objects				
890 Miscellaneous Expenditures		455.00		455.00
Total Other Objects		\$455.00		\$455.00
Total 1243 Gifted Support	\$277,141.19	\$292,145.35		\$569,286.54

General Fund (10)

1260 Physical Support

100 Personnel Services – Salaries

	<u>Elementary</u>	<u>Secondary</u>	<u>Federal</u>	<u>Total</u>
100 Personnel Services – Salaries	383,945.50	6,450.00		390,395.50
Total Personnel Services – Salaries	\$383,945.50	\$6,450.00		\$390,395.50

200 Personnel Services – Employee Benefits

210 Group Insurance – Contracted Provider	15,357.00			15,357.00
220 Social Security Contributions	29,237.03	493.39		29,730.42
230 PSERS Retirement Contributions	92,011.52	1,666.68		93,678.20
260 Workers' Compensation	3,673.00	27.00		3,700.00
Total Personnel Services – Employee Benefits	\$140,278.55	\$2,187.07		\$142,465.62

300 Purchased Professional and Technical Services

329 Professional Educational Services – Other	53,837.08	35,475.03		89,312.11
330 Other Professional Services	41,468.05			41,468.05
Total Purchased Professional and Technical Services	\$95,305.13	\$35,475.03		\$130,780.16

600 Supplies

610 General Supplies			10,480.56	10,480.56
Total Supplies			\$10,480.56	\$10,480.56

Total 1260 Physical Support	\$619,529.18	\$44,112.10	\$10,480.56	\$674,121.84
------------------------------------	---------------------	--------------------	--------------------	---------------------

General Fund (10)

	<u>Elementary</u>	<u>Secondary</u>	<u>Federal</u>	<u>Total</u>
1270 Multi-Handicapped Support				
100 Personnel Services – Salaries				
100 Personnel Services – Salaries	120,683.44	10,970.00		131,653.44
Total Personnel Services – Salaries	\$120,683.44	\$10,970.00		\$131,653.44
200 Personnel Services – Employee Benefits				
210 Group Insurance – Contracted Provider	61,006.00	15,214.00		76,220.00
220 Social Security Contributions	8,974.35	766.59		9,740.94
230 PSERS Retirement Contributions	31,113.06	2,834.56		33,947.62
260 Workers' Compensation	1,145.00	105.00		1,250.00
Total Personnel Services – Employee Benefits	\$102,238.41	\$18,920.15		\$121,158.56
300 Purchased Professional and Technical Services				
322 Professional Educational Services – Ius	3,725.00	7,450.00		11,175.00
329 Professional Educational Services – Other	38,193.84	5,154.39		43,348.23
330 Other Professional Services	201,505.66	144,446.25		345,951.91
Total Purchased Professional and Technical Services	\$243,424.50	\$157,050.64		\$400,475.14
500 Other Purchased Services				
563 Tuition To Nonpublic Schools	126,374.86	127,164.41	35,735.80	289,275.07
Total Other Purchased Services	\$126,374.86	\$127,164.41	\$35,735.80	\$289,275.07
600 Supplies				
610 General Supplies			3,159.69	3,159.69
Total Supplies			\$3,159.69	\$3,159.69
Total 1270 Multi-Handicapped Support	\$592,721.21	\$314,105.20	\$38,895.49	\$945,721.90

General Fund (10)

	<u>Elementary</u>	<u>Secondary</u>	<u>Federal</u>	<u>Total</u>
1280 Early Intervention Support				
100 Personnel Services – Salaries				
100 Personnel Services – Salaries	30,320.00			30,320.00
Total Personnel Services – Salaries	\$30,320.00			\$30,320.00
200 Personnel Services – Employee Benefits				
220 Social Security Contributions	2,293.12			2,293.12
230 PSERS Retirement Contributions	7,834.68			7,834.68
260 Workers’ Compensation	291.00			291.00
Total Personnel Services – Employee Benefits	\$10,418.80			\$10,418.80
300 Purchased Professional and Technical Services				
322 Professional Educational Services – Ius	671,280.48		9,961.00	681,241.48
Total Purchased Professional and Technical Services	\$671,280.48		\$9,961.00	\$681,241.48
Total 1280 Early Intervention Support	\$712,019.28		\$9,961.00	\$721,980.28

General Fund (10)

1290 Special Programs - Other Support

	<u>Elementary</u>	<u>Secondary</u>	<u>Federal</u>	<u>Total</u>
100 Personnel Services – Salaries				
100 Personnel Services – Salaries	300,332.61	286,703.55		587,036.16
Total Personnel Services – Salaries	\$300,332.61	\$286,703.55		\$587,036.16
200 Personnel Services – Employee Benefits				
210 Group Insurance – Contracted Provider	53,755.00	53,755.00		107,510.00
220 Social Security Contributions	22,396.62	21,352.85		43,749.47
230 PSERS Retirement Contributions	77,605.98	74,083.99		151,689.97
250 Unemployment Compensation	8,535.96			8,535.96
260 Workers' Compensation	2,885.00	2,739.00		5,624.00
290 Other Current Employee Benefits	15,000.00			15,000.00
Total Personnel Services – Employee Benefits	\$180,178.56	\$151,930.84		\$332,109.40
300 Purchased Professional and Technical Services				
322 Professional Educational Services – Ius	1,028,644.35	1,032,369.36	1,517,873.50	3,578,887.21
329 Professional Educational Services – Other	640,357.86	189,606.10		829,963.96
330 Other Professional Services	46,651.25	6,433.65		53,084.90
Total Purchased Professional and Technical Services	\$1,715,653.46	\$1,228,409.11	\$1,517,873.50	\$4,461,936.07
400 Purchased Property Services				
430 Repairs and Maintenance Services		2,846.76		2,846.76
Total Purchased Property Services		\$2,846.76		\$2,846.76
500 Other Purchased Services				
550 Printing and Binding	1,702.68	50.67		1,753.35
562 Tuition To Pennsylvania Charter Schools	617,566.20	1,261,278.70		1,878,844.90
563 Tuition To Nonpublic Schools	106,067.03	188,648.90		294,715.93
567 Tuition To Approved Private Schools (APS) and PA Chartered Schools for the Deaf and Blind	1,021,196.16	1,021,196.15		2,042,392.31
580 Travel	7,035.80	2,328.83		9,364.63
Total Other Purchased Services	\$1,753,567.87	\$2,473,503.25		\$4,227,071.12
600 Supplies				
610 General Supplies	10,196.83	2,957.64	11,323.34	24,477.81
640 Books and Periodicals	8,401.12	16,802.24	42,027.77	67,231.13
Total Supplies	\$18,597.95	\$19,759.88	\$53,351.11	\$91,708.94
700 Property				
750 Equipment – Original and Additional	1,569.45			1,569.45
760 Equipment – Replacement	568.43	568.43		1,136.86
Total Property	\$2,137.88	\$568.43		\$2,706.31
800 Other Objects				
820 Claims and Judgments Against the LEA	43,844.00	20,437.50		64,281.50
Total Other Objects	\$43,844.00	\$20,437.50		\$64,281.50
Total 1290 Special Programs - Other Support	\$4,014,312.33	\$4,184,159.32	\$1,571,224.61	\$9,769,696.26

LEA : 125239452 Upper Darby SD

Printed 3/22/2017 1:08:03 PM

General Fund (10)

1300 Vocational Education

500 Other Purchased Services

564 Tuition To Career and Technology Centers

Total Other Purchased Services

Total 1300 Vocational Education

<u>Elementary</u>	<u>Secondary</u>	<u>Federal</u>	<u>Total</u>
	1,334,332.12		1,334,332.12
	\$1,334,332.12		\$1,334,332.12
	\$1,334,332.12		\$1,334,332.12

General Fund (10)

	<u>Elementary</u>	<u>Secondary</u>	<u>Federal</u>	<u>Total</u>
1400 Other Instructional Programs – Elementary / Secondary				
100 Personnel Services – Salaries				
100 Personnel Services – Salaries	112,051.25	482,339.77	117,508.75	711,899.77
Total Personnel Services – Salaries	\$112,051.25	\$482,339.77	\$117,508.75	\$711,899.77
200 Personnel Services – Employee Benefits				
210 Group Insurance – Contracted Provider		76,507.00		76,507.00
220 Social Security Contributions	8,551.86	35,984.88	8,888.48	53,425.22
230 PSERS Retirement Contributions	39,187.44	124,959.10	15,010.56	179,157.10
260 Workers' Compensation	988.00	4,634.00	685.00	6,307.00
Total Personnel Services – Employee Benefits	\$48,727.30	\$242,084.98	\$24,584.04	\$315,396.32
300 Purchased Professional and Technical Services				
322 Professional Educational Services – Ius			94,744.22	94,744.22
329 Professional Educational Services – Other		189,618.37		189,618.37
390 Other Purchased Professional and Technical Services		1,752.30		1,752.30
Total Purchased Professional and Technical Services		\$191,370.67	\$94,744.22	\$286,114.89
400 Purchased Property Services				
430 Repairs and Maintenance Services		944.09		944.09
Total Purchased Property Services		\$944.09		\$944.09
500 Other Purchased Services				
510 Student Transportation Services			3,982.50	3,982.50
561 Tuition To Other School Districts Within the State		107,405.10		107,405.10
568 Tuition To Private Residential Rehabilitative Institutions (PRRI) [In-State] and Detention Centers		761,131.52		761,131.52
Total Other Purchased Services		\$868,536.62	\$3,982.50	\$872,519.12
600 Supplies				
610 General Supplies	3,960.94	5,006.99	2,420.33	11,388.26
Total Supplies	\$3,960.94	\$5,006.99	\$2,420.33	\$11,388.26
700 Property				
760 Equipment – Replacement	7,480.00			7,480.00
Total Property	\$7,480.00			\$7,480.00
Total 1400 Other Instructional Programs – Elementary / Secondary	\$172,219.49	\$1,790,283.12	\$243,239.84	\$2,205,742.45

General Fund (10)

	<u>Elementary</u>	<u>Secondary</u>	<u>Federal</u>	<u>Total</u>
1420 Summer School				
100 Personnel Services – Salaries				
100 Personnel Services – Salaries	97,710.00	44,870.00	57,405.00	199,985.00
Total Personnel Services – Salaries	\$97,710.00	\$44,870.00	\$57,405.00	\$199,985.00
200 Personnel Services – Employee Benefits				
220 Social Security Contributions	7,475.00	3,431.10	4,390.75	15,296.85
230 PSERS Retirement Contributions	29,928.37	13,953.11	7,251.32	51,132.80
260 Workers’ Compensation	641.00	431.00	317.00	1,389.00
Total Personnel Services – Employee Benefits	\$38,044.37	\$17,815.21	\$11,959.07	\$67,818.65
500 Other Purchased Services				
510 Student Transportation Services			3,982.50	3,982.50
Total Other Purchased Services			\$3,982.50	\$3,982.50
600 Supplies				
610 General Supplies	3,960.94	4,800.00	2,420.33	11,181.27
Total Supplies	\$3,960.94	\$4,800.00	\$2,420.33	\$11,181.27
700 Property				
760 Equipment – Replacement	7,480.00			7,480.00
Total Property	\$7,480.00			\$7,480.00
Total 1420 Summer School	\$147,195.31	\$67,485.21	\$75,766.90	\$290,447.42

General Fund (10)

	<u>Elementary</u>	<u>Secondary</u>	<u>Federal</u>	<u>Total</u>
1430 Homebound Instruction				
100 <u>Personnel Services – Salaries</u>				
100 Personnel Services – Salaries	14,341.25	223,265.00		237,606.25
Total Personnel Services – Salaries	\$14,341.25	\$223,265.00		\$237,606.25
200 <u>Personnel Services – Employee Benefits</u>				
220 Social Security Contributions	1,076.86	16,844.43		17,921.29
230 PSERS Retirement Contributions	3,705.79	53,449.32		57,155.11
260 Workers’ Compensation	138.00	2,145.00		2,283.00
Total Personnel Services – Employee Benefits	\$4,920.65	\$72,438.75		\$77,359.40
300 <u>Purchased Professional and Technical Services</u>				
329 Professional Educational Services – Other		186,827.69		186,827.69
390 Other Purchased Professional and Technical Services		1,752.30		1,752.30
Total Purchased Professional and Technical Services		\$188,579.99		\$188,579.99
Total 1430 Homebound Instruction	\$19,261.90	\$484,283.74		\$503,545.64

General Fund (10)

	<u>Elementary</u>	<u>Secondary</u>	<u>Federal</u>	<u>Total</u>
1440 Alternative Regular Education Programs				
100 Personnel Services – Salaries				
100 Personnel Services – Salaries		214,204.77		214,204.77
Total Personnel Services – Salaries		\$214,204.77		\$214,204.77
200 Personnel Services – Employee Benefits				
210 Group Insurance – Contracted Provider		76,507.00		76,507.00
220 Social Security Contributions		15,709.35		15,709.35
230 PSERS Retirement Contributions		55,350.68		55,350.68
260 Workers' Compensation		2,058.00		2,058.00
Total Personnel Services – Employee Benefits		\$149,625.03		\$149,625.03
300 Purchased Professional and Technical Services				
329 Professional Educational Services – Other		2,790.68		2,790.68
Total Purchased Professional and Technical Services		\$2,790.68		\$2,790.68
400 Purchased Property Services				
430 Repairs and Maintenance Services		944.09		944.09
Total Purchased Property Services		\$944.09		\$944.09
500 Other Purchased Services				
561 Tuition To Other School Districts Within the State		107,405.10		107,405.10
568 Tuition To Private Residential Rehabilitative Institutions (PRRI) [In-State] and Detention Centers		761,131.52		761,131.52
Total Other Purchased Services		\$868,536.62		\$868,536.62
600 Supplies				
610 General Supplies		206.99		206.99
Total Supplies		\$206.99		\$206.99
Total 1440 Alternative Regular Education Programs		\$1,236,308.18		\$1,236,308.18

General Fund (10)

1441 Adjudicated / Court-Placed Programs

<u>Elementary</u>	<u>Secondary</u>	<u>Federal</u>	<u>Total</u>
-------------------	------------------	----------------	--------------

300 Purchased Professional and Technical Services

329 Professional Educational Services – Other	1,687.50		1,687.50
---	----------	--	----------

Total Purchased Professional and Technical Services

\$1,687.50		\$1,687.50
-------------------	--	-------------------

500 Other Purchased Services

561 Tuition To Other School Districts Within the State	107,405.10		107,405.10
--	------------	--	------------

568 Tuition To Private Residential Rehabilitative Institutions (PRRI) [In-State] and Detention Centers	761,131.52		761,131.52
--	------------	--	------------

Total Other Purchased Services

\$868,536.62		\$868,536.62
---------------------	--	---------------------

Total 1441 Adjudicated / Court-Placed Programs

\$870,224.12		\$870,224.12
---------------------	--	---------------------

General Fund (10)

1442 Alternative Education Programs

100 Personnel Services – Salaries

100 Personnel Services – Salaries

Total Personnel Services – Salaries

200 Personnel Services – Employee Benefits

210 Group Insurance – Contracted Provider

220 Social Security Contributions

230 PSERS Retirement Contributions

260 Workers' Compensation

Total Personnel Services – Employee Benefits

300 Purchased Professional and Technical Services

329 Professional Educational Services – Other

Total Purchased Professional and Technical Services

400 Purchased Property Services

430 Repairs and Maintenance Services

Total Purchased Property Services

600 Supplies

610 General Supplies

Total Supplies

Total 1442 Alternative Education Programs

	<u>Elementary</u>	<u>Secondary</u>	<u>Federal</u>	<u>Total</u>
		214,204.77		214,204.77
		\$214,204.77		\$214,204.77
		76,507.00		76,507.00
		15,709.35		15,709.35
		55,350.68		55,350.68
		2,058.00		2,058.00
		\$149,625.03		\$149,625.03
		1,103.18		1,103.18
		\$1,103.18		\$1,103.18
		944.09		944.09
		\$944.09		\$944.09
		206.99		206.99
		\$206.99		\$206.99
		\$366,084.06		\$366,084.06

General Fund (10)

1450 Instructional Programs Outside the Established School Day

	<u>Elementary</u>	<u>Secondary</u>	<u>Federal</u>	<u>Total</u>
100 Personnel Services – Salaries				
100 Personnel Services – Salaries			60,103.75	60,103.75
Total Personnel Services – Salaries			\$60,103.75	\$60,103.75
200 Personnel Services – Employee Benefits				
220 Social Security Contributions			4,497.73	4,497.73
230 PSERS Retirement Contributions	5,553.28	2,205.99	7,759.24	15,518.51
260 Workers’ Compensation	209.00		368.00	577.00
Total Personnel Services – Employee Benefits	\$5,762.28	\$2,205.99	\$12,624.97	\$20,593.24
Total 1450 Instructional Programs Outside the Established School Day	\$5,762.28	\$2,205.99	\$72,728.72	\$80,696.99

General Fund (10)

	<u>Elementary</u>	<u>Secondary</u>	<u>Federal</u>	<u>Total</u>
1490 Additional Other Instructional Programs				
300 <u>Purchased Professional and Technical Services</u>				
322 Professional Educational Services – lus			94,744.22	94,744.22
Total Purchased Professional and Technical Services			\$94,744.22	\$94,744.22
Total 1490 Additional Other Instructional Programs			\$94,744.22	\$94,744.22

General Fund (10)

1600 Adult Education Programs

300 Purchased Professional and Technical Services

329 Professional Educational Services – Other

Total Purchased Professional and Technical Services

Total 1600 Adult Education Programs

Elementary

Secondary

Federal

Total

20,000.00

20,000.00

\$20,000.00

\$20,000.00

\$20,000.00

\$20,000.00

General Fund (10)

1700 Higher Education Programs

Elementary

Secondary

Federal

Total

500 Other Purchased Services

566 Tuition To Institutions of Higher Education and Technical Institutes

829,840.00

Total Other Purchased Services

\$829,840.00

Total 1700 Higher Education Programs

\$829,840.00

General Fund (10)

2000 Support Services

Total

100 Personnel Services – Salaries

100 Personnel Services – Salaries 22,512,409.67

Total Personnel Services – Salaries

\$22,512,409.67

200 Personnel Services – Employee Benefits

210 Group Insurance – Contracted Provider 4,901,467.72

220 Social Security Contributions 1,661,524.58

230 PSERS Retirement Contributions 5,738,329.01

240 Tuition Reimbursement 354,302.95

250 Unemployment Compensation 32,440.03

260 Workers' Compensation 214,751.00

290 Other Current Employee Benefits 483,343.64

Total Personnel Services – Employee Benefits

\$13,386,158.93

300 Purchased Professional and Technical Services

324 Professional Educational Services – Employee Training and Development Services 19,035.53

329 Professional Educational Services – Other 431,361.18

330 Other Professional Services 815,015.19

340 Technical Services 226,317.96

390 Other Purchased Professional and Technical Services 75,749.27

Total Purchased Professional and Technical Services

\$1,567,479.13

400 Purchased Property Services

410 Cleaning Services 1,942,004.56

420 Utility Services 1,409,435.16

430 Repairs and Maintenance Services 1,370,528.11

440 Rentals 551,670.97

490 Other Purchased Property Services 6,510.00

Total Purchased Property Services

\$5,280,148.80

500 Other Purchased Services

513 Contracted Carriers 208,891.60

515 Public Carriers 60,994.52

516 Student Transportation Services From the IU 104,118.66

520 Insurance – General 645,009.00

522 Automotive Liability Insurance 229,633.00

529 Other Insurance 7,957.00

530 Communications 175,641.74

549 Other Advertising/Public Relations 18,877.51

550 Printing and Binding 378.18

580 Travel 41,248.28

591 Services Purchased Locally 3,688.79

595 IU Payments By Withholding 94,829.27

Total Other Purchased Services

\$1,591,267.55

600 Supplies

610 General Supplies 1,134,474.18

620 Energy 805,747.32

630 Food 6,534.30

LEA : 125239452 Upper Darby SD

Printed 3/22/2017 1:08:05 PM

General Fund (10)

2000 Support Services

	<u>Total</u>
600 Supplies	
640 Books and Periodicals	71,393.12
Total Supplies	\$2,018,148.92
700 Property	
750 Equipment – Original and Additional	45,504.07
760 Equipment – Replacement	965,352.32
Total Property	\$1,010,856.39
800 Other Objects	
810 Dues and Fees	58,811.49
820 Claims and Judgments Against the LEA	32,700.00
Total Other Objects	\$91,511.49
Total 2000 Support Services	\$47,457,980.88

General Fund (10)

	<u>Elementary</u>	<u>Secondary</u>	<u>Federal</u>	<u>Total</u>
2100 Support Services – Students				
100 Personnel Services – Salaries				
100 Personnel Services – Salaries	713,235.47	1,679,882.12	33,814.63	3,749,997.58
Total Personnel Services – Salaries	\$713,235.47	\$1,679,882.12	\$33,814.63	\$3,749,997.58
200 Personnel Services – Employee Benefits				
210 Group Insurance – Contracted Provider	181,499.07	390,099.06	7,680.00	939,888.13
220 Social Security Contributions	53,057.99	124,478.07	2,518.27	278,797.76
230 PSERS Retirement Contributions	184,802.82	434,124.11	4,368.35	963,975.35
260 Workers' Compensation	6,851.00	16,141.00	306.00	35,850.00
Total Personnel Services – Employee Benefits	\$426,210.88	\$964,842.24	\$14,872.62	\$2,218,511.24
300 Purchased Professional and Technical Services				
324 Professional Educational Services – Employee Training and Development Services				150.00
329 Professional Educational Services – Other	8,118.00	10,994.62		57,070.61
330 Other Professional Services	34,220.00			72,770.98
340 Technical Services	19,064.00	67,957.50		87,021.50
390 Other Purchased Professional and Technical Services	28,653.79	250.00	44,346.75	73,250.54
Total Purchased Professional and Technical Services	\$90,055.79	\$79,202.12	\$44,346.75	\$290,263.63
400 Purchased Property Services				
430 Repairs and Maintenance Services	41,257.14	41,257.14		85,177.08
Total Purchased Property Services	\$41,257.14	\$41,257.14		\$85,177.08
500 Other Purchased Services				
530 Communications				5,145.25
580 Travel	79.52			3,300.50
Total Other Purchased Services	\$79.52			\$8,445.75
600 Supplies				
610 General Supplies	38,107.66	29,196.21	748.14	70,780.02
640 Books and Periodicals		500.00		500.00
Total Supplies	\$38,107.66	\$29,696.21	\$748.14	\$71,280.02
700 Property				
750 Equipment – Original and Additional	7,202.00	22,814.00		31,331.00
760 Equipment – Replacement	2,625.00			11,201.07
Total Property	\$9,827.00	\$22,814.00		\$42,532.07
800 Other Objects				
810 Dues and Fees	275.00	89.00		364.00
Total Other Objects	\$275.00	\$89.00		\$364.00
Total 2100 Support Services – Students	\$1,319,048.46	\$2,817,782.83	\$93,782.14	\$6,466,571.37

General Fund (10)

	<u>Elementary</u>	<u>Secondary</u>	<u>Federal</u>	<u>Total</u>
2110 Supervision of Student Services				
100 Personnel Services – Salaries				
100 Personnel Services – Salaries	80,371.21	80,370.79		160,742.00
Total Personnel Services – Salaries	\$80,371.21	\$80,370.79		\$160,742.00
200 Personnel Services – Employee Benefits				
210 Group Insurance – Contracted Provider	16,431.07	16,431.06		32,862.13
220 Social Security Contributions	5,651.74	5,651.15		11,302.89
230 PSERS Retirement Contributions	20,767.81	20,767.80		41,535.61
260 Workers' Compensation	772.00	772.00		1,544.00
Total Personnel Services – Employee Benefits	\$43,622.62	\$43,622.01		\$87,244.63
300 Purchased Professional and Technical Services				
340 Technical Services	19,064.00	67,957.50		87,021.50
Total Purchased Professional and Technical Services	\$19,064.00	\$67,957.50		\$87,021.50
400 Purchased Property Services				
430 Repairs and Maintenance Services	41,257.14	41,257.14		82,514.28
Total Purchased Property Services	\$41,257.14	\$41,257.14		\$82,514.28
600 Supplies				
610 General Supplies	37,733.15	10,833.57		48,566.72
640 Books and Periodicals		500.00		500.00
Total Supplies	\$37,733.15	\$11,333.57		\$49,066.72
700 Property				
760 Equipment – Replacement	2,625.00			2,625.00
Total Property	\$2,625.00			\$2,625.00
800 Other Objects				
810 Dues and Fees	275.00	89.00		364.00
Total Other Objects	\$275.00	\$89.00		\$364.00
Total 2110 Supervision of Student Services	\$224,948.12	\$244,630.01		\$469,578.13

General Fund (10)

	<u>Elementary</u>	<u>Secondary</u>	<u>Federal</u>	<u>Total</u>
2111 Supervision of Student Services – Head of Component				
100 Personnel Services – Salaries				
100 Personnel Services – Salaries	80,371.21	80,370.79		160,742.00
Total Personnel Services – Salaries	\$80,371.21	\$80,370.79		\$160,742.00
200 Personnel Services – Employee Benefits				
210 Group Insurance – Contracted Provider	16,431.07	16,431.06		32,862.13
220 Social Security Contributions	5,651.74	5,651.15		11,302.89
230 PSERS Retirement Contributions	20,767.81	20,767.80		41,535.61
260 Workers' Compensation	772.00	772.00		1,544.00
Total Personnel Services – Employee Benefits	\$43,622.62	\$43,622.01		\$87,244.63
600 Supplies				
610 General Supplies		216.29		216.29
Total Supplies		\$216.29		\$216.29
700 Property				
760 Equipment – Replacement	2,625.00			2,625.00
Total Property	\$2,625.00			\$2,625.00
800 Other Objects				
810 Dues and Fees	275.00	89.00		364.00
Total Other Objects	\$275.00	\$89.00		\$364.00
Total 2111 Supervision of Student Services – Head of Component	\$126,893.83	\$124,298.09		\$251,191.92

General Fund (10)

	<u>Elementary</u>	<u>Secondary</u>	<u>Federal</u>	<u>Total</u>
2119 Supervision of Student Services – All Other Supervision				
300 <u>Purchased Professional and Technical Services</u>				
340 Technical Services	19,064.00	67,957.50		87,021.50
Total Purchased Professional and Technical Services	\$19,064.00	\$67,957.50		\$87,021.50
400 <u>Purchased Property Services</u>				
430 Repairs and Maintenance Services	41,257.14	41,257.14		82,514.28
Total Purchased Property Services	\$41,257.14	\$41,257.14		\$82,514.28
600 <u>Supplies</u>				
610 General Supplies	37,733.15	10,617.28		48,350.43
640 Books and Periodicals		500.00		500.00
Total Supplies	\$37,733.15	\$11,117.28		\$48,850.43
Total 2119 Supervision of Student Services – All Other Supervision	\$98,054.29	\$120,331.92		\$218,386.21

General Fund (10)

	<u>Elementary</u>	<u>Secondary</u>	<u>Federal</u>	<u>Total</u>
2120 Guidance Services				
100 Personnel Services – Salaries				
100 Personnel Services – Salaries	189,062.62	1,175,436.78	4,230.00	1,368,729.40
Total Personnel Services – Salaries	\$189,062.62	\$1,175,436.78	\$4,230.00	\$1,368,729.40
200 Personnel Services – Employee Benefits				
210 Group Insurance – Contracted Provider	40,882.00	273,758.00		314,640.00
220 Social Security Contributions	14,118.09	87,149.32	323.05	101,590.46
230 PSERS Retirement Contributions	49,356.64	303,775.52	545.95	353,678.11
260 Workers' Compensation	1,816.00	11,295.00	22.00	13,133.00
Total Personnel Services – Employee Benefits	\$106,172.73	\$675,977.84	\$891.00	\$783,041.57
300 Purchased Professional and Technical Services				
390 Other Purchased Professional and Technical Services	28,653.79	250.00	44,346.75	73,250.54
Total Purchased Professional and Technical Services	\$28,653.79	\$250.00	\$44,346.75	\$73,250.54
600 Supplies				
610 General Supplies	31.65	18,019.78	132.32	18,183.75
Total Supplies	\$31.65	\$18,019.78	\$132.32	\$18,183.75
700 Property				
750 Equipment – Original and Additional		15,612.00		15,612.00
Total Property		\$15,612.00		\$15,612.00
Total 2120 Guidance Services	\$323,920.79	\$1,885,296.40	\$49,600.07	\$2,258,817.26

General Fund (10)

2130 Attendance Services

Elementary Secondary Federal Total

100 Personnel Services – Salaries

100 Personnel Services – Salaries 346,176.86

Total Personnel Services – Salaries

\$346,176.86

200 Personnel Services – Employee Benefits

210 Group Insurance – Contracted Provider 122,550.00

220 Social Security Contributions 26,264.55

230 PSERS Retirement Contributions 84,429.95

260 Workers' Compensation 3,167.00

Total Personnel Services – Employee Benefits

\$236,411.50

300 Purchased Professional and Technical Services

329 Professional Educational Services – Other 15,599.62

Total Purchased Professional and Technical Services

\$15,599.62

400 Purchased Property Services

430 Repairs and Maintenance Services 2,662.80

Total Purchased Property Services

\$2,662.80

500 Other Purchased Services

530 Communications 5,145.25

580 Travel 2,890.35

Total Other Purchased Services

\$8,035.60

600 Supplies

610 General Supplies 1,958.76

Total Supplies

\$1,958.76

700 Property

750 Equipment – Original and Additional 1,315.00

760 Equipment – Replacement 8,576.07

Total Property

\$9,891.07

Total 2130 Attendance Services

\$620,736.21

General Fund (10)

2140 Psychological Services

	<u>Elementary</u>	<u>Secondary</u>	<u>Federal</u>	<u>Total</u>
100 Personnel Services – Salaries				
100 Personnel Services – Salaries	443,801.64	424,074.55		867,876.19
Total Personnel Services – Salaries	\$443,801.64	\$424,074.55		\$867,876.19
200 Personnel Services – Employee Benefits				
210 Group Insurance – Contracted Provider	124,186.00	99,910.00		224,096.00
220 Social Security Contributions	33,288.16	31,677.60		64,965.76
230 PSERS Retirement Contributions	114,678.37	109,580.79		224,259.16
260 Workers' Compensation	4,263.00	4,074.00		8,337.00
Total Personnel Services – Employee Benefits	\$276,415.53	\$245,242.39		\$521,657.92
300 Purchased Professional and Technical Services				
329 Professional Educational Services – Other	8,118.00	10,994.62		19,112.62
330 Other Professional Services	34,220.00			34,220.00
Total Purchased Professional and Technical Services	\$42,338.00	\$10,994.62		\$53,332.62
500 Other Purchased Services				
580 Travel	79.52			79.52
Total Other Purchased Services	\$79.52			\$79.52
600 Supplies				
610 General Supplies	342.86	342.86		685.72
Total Supplies	\$342.86	\$342.86		\$685.72
700 Property				
750 Equipment – Original and Additional	7,202.00	7,202.00		14,404.00
Total Property	\$7,202.00	\$7,202.00		\$14,404.00
Total 2140 Psychological Services	\$770,179.55	\$687,856.42		\$1,458,035.97

General Fund (10)

2160 Social Work Services

	<u>Elementary</u>	<u>Secondary</u>	<u>Federal</u>	<u>Total</u>
--	-------------------	------------------	----------------	--------------

100 Personnel Services – Salaries

100 Personnel Services – Salaries			29,584.63	1,006,473.13
-----------------------------------	--	--	-----------	--------------

Total Personnel Services – Salaries

			\$29,584.63	\$1,006,473.13
--	--	--	--------------------	-----------------------

200 Personnel Services – Employee Benefits

210 Group Insurance – Contracted Provider			7,680.00	245,740.00
---	--	--	----------	------------

220 Social Security Contributions			2,195.22	74,674.10
-----------------------------------	--	--	----------	-----------

230 PSERS Retirement Contributions			3,822.40	260,072.52
------------------------------------	--	--	----------	------------

260 Workers' Compensation			284.00	9,669.00
---------------------------	--	--	--------	----------

Total Personnel Services – Employee Benefits

			\$13,981.62	\$590,155.62
--	--	--	--------------------	---------------------

300 Purchased Professional and Technical Services

324 Professional Educational Services – Employee Training and Development Services				150.00
--	--	--	--	--------

329 Professional Educational Services – Other				22,358.37
---	--	--	--	-----------

330 Other Professional Services				38,550.98
---------------------------------	--	--	--	-----------

Total Purchased Professional and Technical Services

				\$61,059.35
--	--	--	--	--------------------

500 Other Purchased Services

580 Travel				330.63
------------	--	--	--	--------

Total Other Purchased Services

				\$330.63
--	--	--	--	-----------------

600 Supplies

610 General Supplies				769.25
----------------------	--	--	--	--------

Total Supplies

				\$769.25
--	--	--	--	-----------------

Total 2160 Social Work Services

			\$43,566.25	\$1,658,787.98
--	--	--	--------------------	-----------------------

LEA : 125239452 Upper Darby SD

Printed 3/22/2017 1:08:05 PM

General Fund (10)

2190 Other Student Services

Elementary

Secondary

Federal

Total

600 Supplies

610 General Supplies

615.82

615.82

Total Supplies

\$615.82

\$615.82

Total 2190 Other Student Services

\$615.82

\$615.82

General Fund (10)

	<u>Elementary</u>	<u>Secondary</u>	<u>Federal</u>	<u>Total</u>
2200 Support Services – Instructional Staff				
100 Personnel Services – Salaries				
100 Personnel Services – Salaries	1,244,706.91	897,174.85	344,212.67	2,486,094.43
Total Personnel Services – Salaries	\$1,244,706.91	\$897,174.85	\$344,212.67	\$2,486,094.43
200 Personnel Services – Employee Benefits				
210 Group Insurance – Contracted Provider	299,587.85	252,648.87	76,792.00	629,028.72
220 Social Security Contributions	92,337.98	66,618.55	25,690.13	184,646.66
230 PSERS Retirement Contributions	364,440.06	231,516.95	44,469.64	640,426.65
240 Tuition Reimbursement	129,117.00	154,997.00		284,114.00
260 Workers' Compensation	11,969.00	8,635.00	3,280.00	23,884.00
290 Other Current Employee Benefits	2,756.85	2,756.86		5,513.71
Total Personnel Services – Employee Benefits	\$900,208.74	\$717,173.23	\$150,231.77	\$1,767,613.74
300 Purchased Professional and Technical Services				
324 Professional Educational Services – Employee Training and Development Services	1,637.69	1,202.69	2,825.00	5,665.38
329 Professional Educational Services – Other	15,671.64	221,174.11	121,434.00	358,279.75
Total Purchased Professional and Technical Services	\$17,309.33	\$222,376.80	\$124,259.00	\$363,945.13
400 Purchased Property Services				
430 Repairs and Maintenance Services	11,580.76	2,391.74		13,972.50
Total Purchased Property Services	\$11,580.76	\$2,391.74		\$13,972.50
500 Other Purchased Services				
580 Travel	777.16	2,174.83	861.24	3,813.23
Total Other Purchased Services	\$777.16	\$2,174.83	\$861.24	\$3,813.23
600 Supplies				
610 General Supplies	2,946.56	8,337.75	151.45	11,435.76
640 Books and Periodicals	24,273.93	18,663.08		42,937.01
Total Supplies	\$27,220.49	\$27,000.83	\$151.45	\$54,372.77
700 Property				
750 Equipment – Original and Additional	2,064.07	2,064.07		4,128.14
760 Equipment – Replacement	4,262.50	667.50		4,930.00
Total Property	\$6,326.57	\$2,731.57		\$9,058.14
800 Other Objects				
810 Dues and Fees	232.05	232.05		464.10
Total Other Objects	\$232.05	\$232.05		\$464.10
Total 2200 Support Services – Instructional Staff	\$2,208,362.01	\$1,871,255.90	\$619,716.13	\$4,699,334.04

General Fund (10)

	<u>Elementary</u>	<u>Secondary</u>	<u>Federal</u>	<u>Total</u>
2250 School Library Services				
100 Personnel Services – Salaries				
100 Personnel Services – Salaries	195,876.60	91,268.40		287,145.00
Total Personnel Services – Salaries	\$195,876.60	\$91,268.40		\$287,145.00
200 Personnel Services – Employee Benefits				
210 Group Insurance – Contracted Provider	53,755.00	99,119.00		152,874.00
220 Social Security Contributions	14,577.85	6,785.42		21,363.27
230 PSERS Retirement Contributions	50,614.64	23,246.47		73,861.11
260 Workers' Compensation	1,882.00	864.00		2,746.00
Total Personnel Services – Employee Benefits	\$120,829.49	\$130,014.89		\$250,844.38
300 Purchased Professional and Technical Services				
329 Professional Educational Services – Other	2,693.48	27,520.00		30,213.48
Total Purchased Professional and Technical Services	\$2,693.48	\$27,520.00		\$30,213.48
400 Purchased Property Services				
430 Repairs and Maintenance Services	11,243.26	2,391.74		13,635.00
Total Purchased Property Services	\$11,243.26	\$2,391.74		\$13,635.00
600 Supplies				
610 General Supplies	549.20	7,103.10		7,652.30
640 Books and Periodicals	10,174.06	5,318.90		15,492.96
Total Supplies	\$10,723.26	\$12,422.00		\$23,145.26
Total 2250 School Library Services	\$341,366.09	\$263,617.03		\$604,983.12

General Fund (10)

2260 Instruction and Curriculum Development Services

	<u>Elementary</u>	<u>Secondary</u>	<u>Federal</u>	<u>Total</u>
100 Personnel Services – Salaries				
100 Personnel Services – Salaries	636,613.34	559,311.71	112.67	1,196,037.72
Total Personnel Services – Salaries	\$636,613.34	\$559,311.71	\$112.67	\$1,196,037.72
200 Personnel Services – Employee Benefits				
210 Group Insurance – Contracted Provider	153,680.85	107,455.87		261,136.72
220 Social Security Contributions	47,090.43	41,233.27	8.62	88,332.32
230 PSERS Retirement Contributions	164,465.64	144,477.81	12.05	308,955.50
260 Workers' Compensation	6,115.00	5,403.00		11,518.00
290 Other Current Employee Benefits	2,756.85	2,756.86		5,513.71
Total Personnel Services – Employee Benefits	\$374,108.77	\$301,326.81	\$20.67	\$675,456.25
300 Purchased Professional and Technical Services				
324 Professional Educational Services – Employee Training and Development Services	99.50	99.50		199.00
Total Purchased Professional and Technical Services	\$99.50	\$99.50		\$199.00
400 Purchased Property Services				
430 Repairs and Maintenance Services	337.50			337.50
Total Purchased Property Services	\$337.50			\$337.50
500 Other Purchased Services				
580 Travel	561.52	577.81	59.24	1,198.57
Total Other Purchased Services	\$561.52	\$577.81	\$59.24	\$1,198.57
600 Supplies				
610 General Supplies	2,346.43	1,234.65	151.45	3,732.53
640 Books and Periodicals	9.38	9.39		18.77
Total Supplies	\$2,355.81	\$1,244.04	\$151.45	\$3,751.30
700 Property				
750 Equipment – Original and Additional	2,064.07	2,064.07		4,128.14
760 Equipment – Replacement	4,262.50	667.50		4,930.00
Total Property	\$6,326.57	\$2,731.57		\$9,058.14
800 Other Objects				
810 Dues and Fees	232.05	232.05		464.10
Total Other Objects	\$232.05	\$232.05		\$464.10
Total 2260 Instruction and Curriculum Development Services	\$1,020,635.06	\$865,523.49	\$344.03	\$1,886,502.58

General Fund (10)

	<u>Elementary</u>	<u>Secondary</u>	<u>Federal</u>	<u>Total</u>
2270 Instructional Staff Professional Development Services				
100 Personnel Services – Salaries				
100 Personnel Services – Salaries	412,216.97	246,594.74	344,100.00	1,002,911.71
Total Personnel Services – Salaries	\$412,216.97	\$246,594.74	\$344,100.00	\$1,002,911.71
200 Personnel Services – Employee Benefits				
210 Group Insurance – Contracted Provider	92,152.00	46,074.00	76,792.00	215,018.00
220 Social Security Contributions	30,669.70	18,599.86	25,681.51	74,951.07
230 PSERS Retirement Contributions	149,359.78	63,792.67	44,457.59	257,610.04
240 Tuition Reimbursement	129,117.00	154,997.00		284,114.00
260 Workers' Compensation	3,972.00	2,368.00	3,280.00	9,620.00
Total Personnel Services – Employee Benefits	\$405,270.48	\$285,831.53	\$150,211.10	\$841,313.11
300 Purchased Professional and Technical Services				
324 Professional Educational Services – Employee Training and Development Services	1,538.19	1,103.19	2,825.00	5,466.38
329 Professional Educational Services – Other	12,978.16	193,654.11	121,434.00	328,066.27
Total Purchased Professional and Technical Services	\$14,516.35	\$194,757.30	\$124,259.00	\$333,532.65
500 Other Purchased Services				
580 Travel	215.64	1,597.02	802.00	2,614.66
Total Other Purchased Services	\$215.64	\$1,597.02	\$802.00	\$2,614.66
600 Supplies				
610 General Supplies	50.93			50.93
640 Books and Periodicals	14,090.49	13,334.79		27,425.28
Total Supplies	\$14,141.42	\$13,334.79		\$27,476.21
Total 2270 Instructional Staff Professional Development Services	\$846,360.86	\$742,115.38	\$619,372.10	\$2,207,848.34

LEA : 125239452 Upper Darby SD

Printed 3/22/2017 1:08:05 PM

Page - 16 of 69

General Fund (10)

	<u>Elementary</u>	<u>Secondary</u>	<u>Federal</u>	<u>Total</u>
2300 Support Services – Administration				
100 Personnel Services – Salaries				
100 Personnel Services – Salaries	2,101,033.41	1,797,519.37	75,000.00	4,562,477.58
Total Personnel Services – Salaries	\$2,101,033.41	\$1,797,519.37	\$75,000.00	\$4,562,477.58
200 Personnel Services – Employee Benefits				
210 Group Insurance – Contracted Provider	623,958.83	426,446.99	15,985.00	1,220,124.94
220 Social Security Contributions	156,194.50	134,906.36	5,627.07	332,857.20
230 PSERS Retirement Contributions	520,153.29	485,863.06	9,690.05	1,165,180.17
250 Unemployment Compensation	101.40	4,738.02		4,839.42
260 Workers' Compensation	20,112.00	17,268.00	721.00	43,758.00
290 Other Current Employee Benefits	106,207.71	53,000.00		317,029.93
Total Personnel Services – Employee Benefits	\$1,426,727.73	\$1,122,222.43	\$32,023.12	\$3,083,789.66
300 Purchased Professional and Technical Services				
324 Professional Educational Services – Employee Training and Development Services				8,053.40
330 Other Professional Services				503,226.94
Total Purchased Professional and Technical Services				\$511,280.34
400 Purchased Property Services				
430 Repairs and Maintenance Services	29,021.87	9,506.01		68,848.21
Total Purchased Property Services	\$29,021.87	\$9,506.01		\$68,848.21
500 Other Purchased Services				
520 Insurance – General				645,009.00
530 Communications	8,180.38	30,349.23		56,279.14
549 Other Advertising/Public Relations				17,514.27
580 Travel	699.61	287.80		14,898.88
Total Other Purchased Services	\$8,879.99	\$30,637.03		\$733,701.29
600 Supplies				
610 General Supplies	2,366.82	14,029.36		25,123.14
630 Food		788.01		788.01
640 Books and Periodicals	575.95			2,747.60
Total Supplies	\$2,942.77	\$14,817.37		\$28,658.75
700 Property				
750 Equipment – Original and Additional	136.79			136.79
760 Equipment – Replacement	6,379.78	4,630.20		12,258.98
Total Property	\$6,516.57	\$4,630.20		\$12,395.77
800 Other Objects				
810 Dues and Fees	5,373.41	7,211.79		41,549.30
820 Claims and Judgments Against the LEA				32,700.00
Total Other Objects	\$5,373.41	\$7,211.79		\$74,249.30
Total 2300 Support Services – Administration	\$3,580,495.75	\$2,986,544.20	\$107,023.12	\$9,075,400.90

General Fund (10)

2310 Board Services

Elementary Secondary Federal Total

100	<u>Personnel Services – Salaries</u>			
	100 Personnel Services – Salaries			56,310.13
	Total Personnel Services – Salaries			\$56,310.13
200	<u>Personnel Services – Employee Benefits</u>			
	210 Group Insurance – Contracted Provider			10,993.00
	220 Social Security Contributions			3,369.12
	230 PSERS Retirement Contributions			14,027.80
	260 Workers' Compensation			541.00
	290 Other Current Employee Benefits			2,700.00
	Total Personnel Services – Employee Benefits			\$31,630.92
300	<u>Purchased Professional and Technical Services</u>			
	324 Professional Educational Services – Employee Training and Development Services			7,824.40
	330 Other Professional Services			51,313.00
	Total Purchased Professional and Technical Services			\$59,137.40
500	<u>Other Purchased Services</u>			
	520 Insurance – General			613,379.00
	549 Other Advertising/Public Relations			17,514.27
	580 Travel			8,430.49
	Total Other Purchased Services			\$639,323.76
600	<u>Supplies</u>			
	610 General Supplies			2,009.12
	640 Books and Periodicals			171.65
	Total Supplies			\$2,180.77
800	<u>Other Objects</u>			
	810 Dues and Fees			18,130.00
	Total Other Objects			\$18,130.00
	Total 2310 Board Services			\$806,712.98

General Fund (10)

2320 Board Treasurer Services

Elementary

Secondary

Federal

Total

100 Personnel Services – Salaries

100 Personnel Services – Salaries

5,025.74

Total Personnel Services – Salaries

\$5,025.74

200 Personnel Services – Employee Benefits

220 Social Security Contributions

379.62

230 PSERS Retirement Contributions

1,298.67

260 Workers' Compensation

48.00

Total Personnel Services – Employee Benefits

\$1,726.29

Total 2320 Board Treasurer Services

\$6,752.03

General Fund (10)

2330 Tax Assessment and Collection Services

Elementary

Secondary

Federal

Total

100 Personnel Services – Salaries

100 Personnel Services – Salaries

57,437.00

Total Personnel Services – Salaries

\$57,437.00

200 Personnel Services – Employee Benefits

210 Group Insurance – Contracted Provider

15,214.00

220 Social Security Contributions

4,363.59

230 PSERS Retirement Contributions

14,841.67

260 Workers' Compensation

551.00

Total Personnel Services – Employee Benefits

\$34,970.26

300 Purchased Professional and Technical Services

330 Other Professional Services

22,609.26

Total Purchased Professional and Technical Services

\$22,609.26

400 Purchased Property Services

430 Repairs and Maintenance Services

17,350.00

Total Purchased Property Services

\$17,350.00

500 Other Purchased Services

520 Insurance – General

31,630.00

530 Communications

17,749.53

Total Other Purchased Services

\$49,379.53

600 Supplies

610 General Supplies

1,449.53

Total Supplies

\$1,449.53

Total 2330 Tax Assessment and Collection Services

\$183,195.58

LEA : 125239452 Upper Darby SD

Printed 3/22/2017 1:08:05 PM

General Fund (10)

	<u>Elementary</u>	<u>Secondary</u>	<u>Federal</u>	<u>Total</u>
2350 Legal and Accounting Services				
300 <u>Purchased Professional and Technical Services</u>				
330 Other Professional Services				429,304.68
Total Purchased Professional and Technical Services				\$429,304.68
800 <u>Other Objects</u>				
820 Claims and Judgments Against the LEA				32,700.00
Total Other Objects				\$32,700.00
Total 2350 Legal and Accounting Services				\$462,004.68

General Fund (10)

2360 Office of the Superintendent / Executive Director Services

Elementary Secondary Federal Total

100 Personnel Services – Salaries				
100 Personnel Services – Salaries				470,151.93
Total Personnel Services – Salaries				\$470,151.93
200 Personnel Services – Employee Benefits				
210 Group Insurance – Contracted Provider				127,527.12
220 Social Security Contributions				28,016.94
230 PSERS Retirement Contributions				119,305.63
260 Workers' Compensation				4,517.00
290 Other Current Employee Benefits				155,122.22
Total Personnel Services – Employee Benefits				\$434,488.91
300 Purchased Professional and Technical Services				
324 Professional Educational Services – Employee Training and Development Services				229.00
Total Purchased Professional and Technical Services				\$229.00
400 Purchased Property Services				
430 Repairs and Maintenance Services				12,970.33
Total Purchased Property Services				\$12,970.33
500 Other Purchased Services				
580 Travel				5,480.98
Total Other Purchased Services				\$5,480.98
600 Supplies				
610 General Supplies				5,268.31
640 Books and Periodicals				2,000.00
Total Supplies				\$7,268.31
700 Property				
760 Equipment – Replacement				1,249.00
Total Property				\$1,249.00
800 Other Objects				
810 Dues and Fees				10,834.10
Total Other Objects				\$10,834.10
Total 2360 Office of the Superintendent / Executive Director Services				\$942,672.56

LEA : 125239452 Upper Darby SD

Printed 3/22/2017 1:08:05 PM

General Fund (10)

	<u>Elementary</u>	<u>Secondary</u>	<u>Federal</u>	<u>Total</u>
2380 Office of the Principal Services				
100 Personnel Services – Salaries				
100 Personnel Services – Salaries	2,101,033.41	1,797,519.37	75,000.00	3,973,552.78
Total Personnel Services – Salaries	\$2,101,033.41	\$1,797,519.37	\$75,000.00	\$3,973,552.78
200 Personnel Services – Employee Benefits				
210 Group Insurance – Contracted Provider	623,958.83	426,446.99	15,985.00	1,066,390.82
220 Social Security Contributions	156,194.50	134,906.36	5,627.07	296,727.93
230 PSERS Retirement Contributions	520,153.29	485,863.06	9,690.05	1,015,706.40
250 Unemployment Compensation	101.40	4,738.02		4,839.42
260 Workers' Compensation	20,112.00	17,268.00	721.00	38,101.00
290 Other Current Employee Benefits	106,207.71	53,000.00		159,207.71
Total Personnel Services – Employee Benefits	\$1,426,727.73	\$1,122,222.43	\$32,023.12	\$2,580,973.28
400 Purchased Property Services				
430 Repairs and Maintenance Services	29,021.87	9,506.01		38,527.88
Total Purchased Property Services	\$29,021.87	\$9,506.01		\$38,527.88
500 Other Purchased Services				
530 Communications	8,180.38	30,349.23		38,529.61
580 Travel	699.61	287.80		987.41
Total Other Purchased Services	\$8,879.99	\$30,637.03		\$39,517.02
600 Supplies				
610 General Supplies	2,366.82	14,029.36		16,396.18
630 Food		788.01		788.01
640 Books and Periodicals	575.95			575.95
Total Supplies	\$2,942.77	\$14,817.37		\$17,760.14
700 Property				
750 Equipment – Original and Additional	136.79			136.79
760 Equipment – Replacement	6,379.78	4,630.20		11,009.98
Total Property	\$6,516.57	\$4,630.20		\$11,146.77
800 Other Objects				
810 Dues and Fees	5,373.41	7,211.79		12,585.20
Total Other Objects	\$5,373.41	\$7,211.79		\$12,585.20
Total 2380 Office of the Principal Services	\$3,580,495.75	\$2,986,544.20	\$107,023.12	\$6,674,063.07

LEA : 125239452 Upper Darby SD

Printed 3/22/2017 1:08:05 PM

General Fund (10)

	<u>Elementary</u>	<u>Secondary</u>	<u>Federal</u>	<u>Total</u>
2400 Support Services – Pupil Health				
100 Personnel Services – Salaries				
100 Personnel Services – Salaries				1,052,426.63
Total Personnel Services – Salaries				\$1,052,426.63
200 Personnel Services – Employee Benefits				
210 Group Insurance – Contracted Provider				230,378.00
220 Social Security Contributions				77,942.01
230 PSERS Retirement Contributions				256,140.20
260 Workers' Compensation				10,096.00
290 Other Current Employee Benefits				15,000.00
Total Personnel Services – Employee Benefits				\$589,556.21
300 Purchased Professional and Technical Services				
329 Professional Educational Services – Other				15,050.82
330 Other Professional Services			3,350.54	9,523.36
Total Purchased Professional and Technical Services			\$3,350.54	\$24,574.18
600 Supplies				
610 General Supplies				8,939.06
Total Supplies				\$8,939.06
Total 2400 Support Services – Pupil Health			\$3,350.54	\$1,675,496.08

General Fund (10)

2420 Medical Services

Elementary

Secondary

Federal

Total

300 Purchased Professional and Technical Services

330 Other Professional Services

743.00

Total Purchased Professional and Technical Services

\$743.00

Total 2420 Medical Services

\$743.00

General Fund (10)

2430 Dental Services

Elementary

Secondary

Federal

Total

300 Purchased Professional and Technical Services

330 Other Professional Services

5,224.50

Total Purchased Professional and Technical Services

\$5,224.50

Total 2430 Dental Services

\$5,224.50

General Fund (10)

2440 Nursing Services

100 Personnel Services – Salaries

	<u>Elementary</u>	<u>Secondary</u>	<u>Federal</u>	<u>Total</u>
100 Personnel Services – Salaries				905,877.92
Total Personnel Services – Salaries				\$905,877.92
200 Personnel Services – Employee Benefits				
210 Group Insurance – Contracted Provider				184,303.00
220 Social Security Contributions				67,018.43
230 PSERS Retirement Contributions				218,501.53
260 Workers' Compensation				8,697.00
290 Other Current Employee Benefits				15,000.00
Total Personnel Services – Employee Benefits				\$493,519.96
300 Purchased Professional and Technical Services				
329 Professional Educational Services – Other				15,050.82
330 Other Professional Services			3,350.54	3,555.86
Total Purchased Professional and Technical Services			\$3,350.54	\$18,606.68
600 Supplies				
610 General Supplies				8,374.46
Total Supplies				\$8,374.46
Total 2440 Nursing Services			\$3,350.54	\$1,426,379.02

General Fund (10)

2450 Nonpublic Health Services

Elementary

Secondary

Federal

Total

100 Personnel Services – Salaries

100 Personnel Services – Salaries

146,548.71

Total Personnel Services – Salaries

\$146,548.71

200 Personnel Services – Employee Benefits

210 Group Insurance – Contracted Provider

46,075.00

220 Social Security Contributions

10,923.58

230 PSERS Retirement Contributions

37,638.67

260 Workers' Compensation

1,399.00

Total Personnel Services – Employee Benefits

\$96,036.25

600 Supplies

610 General Supplies

564.60

Total Supplies

\$564.60

Total 2450 Nonpublic Health Services

\$243,149.56

General Fund (10)

	<u>Elementary</u>	<u>Secondary</u>	<u>Federal</u>	<u>Total</u>
2500 Support Services – Business				
100 Personnel Services – Salaries				
100 Personnel Services – Salaries				868,622.16
Total Personnel Services – Salaries				
				\$868,622.16
200 Personnel Services – Employee Benefits				
210 Group Insurance – Contracted Provider				267,922.05
220 Social Security Contributions				61,529.47
230 PSERS Retirement Contributions				221,047.70
260 Workers' Compensation				8,334.00
290 Other Current Employee Benefits				92,800.00
Total Personnel Services – Employee Benefits				
				\$651,633.22
300 Purchased Professional and Technical Services				
324 Professional Educational Services – Employee Training and Development Services				521.75
330 Other Professional Services				31,578.41
340 Technical Services				11,263.18
Total Purchased Professional and Technical Services				
				\$43,363.34
400 Purchased Property Services				
430 Repairs and Maintenance Services				6,417.15
440 Rentals				14,055.56
Total Purchased Property Services				
				\$20,472.71
500 Other Purchased Services				
530 Communications				17,427.91
580 Travel				1,202.41
Total Other Purchased Services				
				\$18,630.32
600 Supplies				
610 General Supplies				21,598.27
Total Supplies				
				\$21,598.27
700 Property				
750 Equipment – Original and Additional				528.95
760 Equipment – Replacement				21,014.08
Total Property				
				\$21,543.03
800 Other Objects				
810 Dues and Fees				1,321.00
Total Other Objects				
				\$1,321.00
Total 2500 Support Services – Business				
				\$1,647,184.05

General Fund (10)

2510 Fiscal Services

Elementary Secondary Federal Total

100 Personnel Services – Salaries				
100 Personnel Services – Salaries				626,547.76
Total Personnel Services – Salaries				\$626,547.76
200 Personnel Services – Employee Benefits				
210 Group Insurance – Contracted Provider				174,339.76
220 Social Security Contributions				43,349.39
230 PSERS Retirement Contributions				158,973.03
260 Workers' Compensation				6,014.00
290 Other Current Employee Benefits				92,800.00
Total Personnel Services – Employee Benefits				\$475,476.18
300 Purchased Professional and Technical Services				
324 Professional Educational Services – Employee Training and Development Services				521.75
330 Other Professional Services				31,578.41
340 Technical Services				11,263.18
Total Purchased Professional and Technical Services				\$43,363.34
400 Purchased Property Services				
430 Repairs and Maintenance Services				5,073.65
440 Rentals				4,296.00
Total Purchased Property Services				\$9,369.65
500 Other Purchased Services				
530 Communications				17,427.91
580 Travel				1,202.41
Total Other Purchased Services				\$18,630.32
600 Supplies				
610 General Supplies				7,110.17
Total Supplies				\$7,110.17
700 Property				
750 Equipment – Original and Additional				528.95
760 Equipment – Replacement				21,014.08
Total Property				\$21,543.03
800 Other Objects				
810 Dues and Fees				1,065.00
Total Other Objects				\$1,065.00
Total 2510 Fiscal Services				\$1,203,105.45

General Fund (10)

	<u>Elementary</u>	<u>Secondary</u>	<u>Federal</u>	<u>Total</u>
2511 Supervision of Fiscal Services - Head of Component				
100 <u>Personnel Services – Salaries</u>				
100 Personnel Services – Salaries				155,383.71
Total Personnel Services – Salaries				\$155,383.71
200 <u>Personnel Services – Employee Benefits</u>				
210 Group Insurance – Contracted Provider				24,422.28
220 Social Security Contributions				8,556.58
230 PSERS Retirement Contributions				38,060.21
260 Workers' Compensation				1,493.00
290 Other Current Employee Benefits				92,800.00
Total Personnel Services – Employee Benefits				\$165,332.07
300 <u>Purchased Professional and Technical Services</u>				
324 Professional Educational Services – Employee Training and Development Services				213.75
Total Purchased Professional and Technical Services				\$213.75
500 <u>Other Purchased Services</u>				
580 Travel				567.20
Total Other Purchased Services				\$567.20
800 <u>Other Objects</u>				
810 Dues and Fees				230.00
Total Other Objects				\$230.00
Total 2511 Supervision of Fiscal Services - Head of Component				\$321,726.73

General Fund (10)

2513 Receiving and Disbursing Funds Services

Elementary

Secondary

Federal

Total

100 Personnel Services – Salaries

100 Personnel Services – Salaries

91,385.00

Total Personnel Services – Salaries

\$91,385.00

200 Personnel Services – Employee Benefits

210 Group Insurance – Contracted Provider

45,648.00

220 Social Security Contributions

6,587.30

230 PSERS Retirement Contributions

23,613.76

260 Workers' Compensation

878.00

Total Personnel Services – Employee Benefits

\$76,727.06

Total 2513 Receiving and Disbursing Funds Services

\$168,112.06

General Fund (10)

2514 Payroll Services

Elementary

Secondary

Federal

Total

100 Personnel Services – Salaries

100 Personnel Services – Salaries

99,952.72

Total Personnel Services – Salaries

\$99,952.72

200 Personnel Services – Employee Benefits

210 Group Insurance – Contracted Provider

30,433.00

220 Social Security Contributions

7,545.03

230 PSERS Retirement Contributions

25,827.78

260 Workers' Compensation

954.00

Total Personnel Services – Employee Benefits

\$64,759.81

Total 2514 Payroll Services

\$164,712.53

General Fund (10)

2515 Financial Accounting Services

Elementary Secondary Federal Total

100 Personnel Services – Salaries

100 Personnel Services – Salaries 279,826.33

Total Personnel Services – Salaries

\$279,826.33

200 Personnel Services – Employee Benefits

210 Group Insurance – Contracted Provider 73,836.48

220 Social Security Contributions 20,660.48

230 PSERS Retirement Contributions 71,471.28

260 Workers' Compensation 2,689.00

Total Personnel Services – Employee Benefits

\$168,657.24

300 Purchased Professional and Technical Services

324 Professional Educational Services – Employee Training and Development Services 308.00

330 Other Professional Services 31,578.41

340 Technical Services 11,263.18

Total Purchased Professional and Technical Services

\$43,149.59

400 Purchased Property Services

430 Repairs and Maintenance Services 5,073.65

440 Rentals 4,296.00

Total Purchased Property Services

\$9,369.65

500 Other Purchased Services

530 Communications 17,427.91

580 Travel 635.21

Total Other Purchased Services

\$18,063.12

600 Supplies

610 General Supplies 7,110.17

Total Supplies

\$7,110.17

700 Property

750 Equipment – Original and Additional 528.95

760 Equipment – Replacement 21,014.08

Total Property

\$21,543.03

800 Other Objects

810 Dues and Fees 835.00

Total Other Objects

\$835.00

Total 2515 Financial Accounting Services

\$548,554.13

General Fund (10)

2520 Purchasing Services

Elementary

Secondary

Federal

Total

100 Personnel Services – Salaries

100 Personnel Services – Salaries

142,746.50

Total Personnel Services – Salaries

\$142,746.50

200 Personnel Services – Employee Benefits

210 Group Insurance – Contracted Provider

47,935.29

220 Social Security Contributions

10,678.66

230 PSERS Retirement Contributions

36,408.48

260 Workers' Compensation

1,371.00

Total Personnel Services – Employee Benefits

\$96,393.43

800 Other Objects

810 Dues and Fees

256.00

Total Other Objects

\$256.00

Total 2520 Purchasing Services

\$239,395.93

General Fund (10)

2540 Printing, Publishing and Duplicating Services

Elementary

Secondary

Federal

Total

100 Personnel Services – Salaries

100 Personnel Services – Salaries

79,827.90

Total Personnel Services – Salaries

\$79,827.90

200 Personnel Services – Employee Benefits

210 Group Insurance – Contracted Provider

30,433.00

220 Social Security Contributions

6,076.28

230 PSERS Retirement Contributions

20,627.42

260 Workers' Compensation

762.00

Total Personnel Services – Employee Benefits

\$57,898.70

400 Purchased Property Services

430 Repairs and Maintenance Services

1,343.50

440 Rentals

9,759.56

Total Purchased Property Services

\$11,103.06

600 Supplies

610 General Supplies

14,488.10

Total Supplies

\$14,488.10

Total 2540 Printing, Publishing and Duplicating Services

\$163,317.76

General Fund (10)

2590 Other Support Services – Business

Elementary

Secondary

Federal

Total

100 Personnel Services – Salaries

100 Personnel Services – Salaries

19,500.00

Total Personnel Services – Salaries

\$19,500.00

200 Personnel Services – Employee Benefits

210 Group Insurance – Contracted Provider

15,214.00

220 Social Security Contributions

1,425.14

230 PSERS Retirement Contributions

5,038.77

260 Workers' Compensation

187.00

Total Personnel Services – Employee Benefits

\$21,864.91

Total 2590 Other Support Services – Business

\$41,364.91

General Fund (10)

2600 Operation and Maintenance of Plant Services

	<u>Elementary</u>	<u>Secondary</u>	<u>Federal</u>	<u>Total</u>
--	-------------------	------------------	----------------	--------------

100	<u>Personnel Services – Salaries</u>			4,062,032.97
	100 Personnel Services – Salaries			4,062,032.97
	Total Personnel Services – Salaries			\$4,062,032.97
200	<u>Personnel Services – Employee Benefits</u>			
	210 Group Insurance – Contracted Provider			1,181,473.07
	220 Social Security Contributions			303,083.55
	230 PSERS Retirement Contributions			1,023,792.30
	250 Unemployment Compensation			18,205.90
	260 Workers' Compensation			38,616.00
	Total Personnel Services – Employee Benefits			\$2,565,170.82
300	<u>Purchased Professional and Technical Services</u>			
	324 Professional Educational Services – Employee Training and Development Services			1,250.00
	330 Other Professional Services			8,594.75
	Total Purchased Professional and Technical Services			\$9,844.75
400	<u>Purchased Property Services</u>			
	410 Cleaning Services			1,942,004.56
	420 Utility Services			1,409,435.16
	430 Repairs and Maintenance Services			924,894.12
	440 Rentals			500,094.63
	490 Other Purchased Property Services			6,510.00
	Total Purchased Property Services			\$4,782,938.47
500	<u>Other Purchased Services</u>			
	529 Other Insurance			7,957.00
	530 Communications			92,598.53
	580 Travel			8,547.64
	Total Other Purchased Services			\$109,103.17
600	<u>Supplies</u>			
	610 General Supplies	310,109.24	329,262.14	639,371.38
	620 Energy			333,141.44
	640 Books and Periodicals			2,500.00
	Total Supplies	\$310,109.24	\$329,262.14	\$975,012.82
700	<u>Property</u>			
	750 Equipment – Original and Additional			9,379.19
	760 Equipment – Replacement			78,392.74
	Total Property			\$87,771.93
800	<u>Other Objects</u>			
	810 Dues and Fees			6,371.00
	Total Other Objects			\$6,371.00
Total 2600 Operation and Maintenance of Plant Services		\$310,109.24	\$329,262.14	\$12,598,245.93

General Fund (10)

	<u>Elementary</u>	<u>Secondary</u>	<u>Federal</u>	<u>Total</u>
2610 Supervision of Operation and Maintenance of Plant Services				
100 Personnel Services – Salaries				
100 Personnel Services – Salaries				307,388.54
Total Personnel Services – Salaries				\$307,388.54
200 Personnel Services – Employee Benefits				
210 Group Insurance – Contracted Provider				79,396.07
220 Social Security Contributions				22,991.47
230 PSERS Retirement Contributions				74,322.06
260 Workers' Compensation				2,953.00
Total Personnel Services – Employee Benefits				\$179,662.60
500 Other Purchased Services				
580 Travel				216.73
Total Other Purchased Services				\$216.73
600 Supplies				
610 General Supplies	15.00	30.00		45.00
Total Supplies	\$15.00	\$30.00		\$45.00
700 Property				
750 Equipment – Original and Additional				1,910.57
Total Property				\$1,910.57
800 Other Objects				
810 Dues and Fees				510.00
Total Other Objects				\$510.00
Total 2610 Supervision of Operation and Maintenance of Plant Services	\$15.00	\$30.00		\$489,733.44

General Fund (10)

	<u>Elementary</u>	<u>Secondary</u>	<u>Federal</u>	<u>Total</u>
2611 Supervision of Operation and Maintenance of Plant Services – Head of Component				
100 Personnel Services – Salaries				
100 Personnel Services – Salaries				133,302.74
Total Personnel Services – Salaries				\$133,302.74
200 Personnel Services – Employee Benefits				
210 Group Insurance – Contracted Provider				31,252.00
220 Social Security Contributions				10,062.15
230 PSERS Retirement Contributions				32,762.11
260 Workers' Compensation				1,280.00
Total Personnel Services – Employee Benefits				\$75,356.26
600 Supplies				
610 General Supplies	15.00	30.00		45.00
Total Supplies	\$15.00	\$30.00		\$45.00
700 Property				
750 Equipment – Original and Additional				1,910.57
Total Property				\$1,910.57
800 Other Objects				
810 Dues and Fees				230.00
Total Other Objects				\$230.00
Total 2611 Supervision of Operation and Maintenance of Plant Services – Head of Component	\$15.00	\$30.00		\$210,844.57

General Fund (10)

2619 Supervision of Operation and Maintenance of Plant Services – All Other Supervision

Elementary

Secondary

Federal

Total

100 Personnel Services – Salaries

100 Personnel Services – Salaries

174,085.80

Total Personnel Services – Salaries

\$174,085.80

200 Personnel Services – Employee Benefits

210 Group Insurance – Contracted Provider

48,144.07

220 Social Security Contributions

12,929.32

230 PSERS Retirement Contributions

41,559.95

260 Workers' Compensation

1,673.00

Total Personnel Services – Employee Benefits

\$104,306.34

500 Other Purchased Services

580 Travel

216.73

Total Other Purchased Services

\$216.73

800 Other Objects

810 Dues and Fees

280.00

Total Other Objects

\$280.00

Total 2619 Supervision of Operation and Maintenance of Plant Services – All Other Supervision

\$278,888.87

General Fund (10)

	<u>Elementary</u>	<u>Secondary</u>	<u>Federal</u>	<u>Total</u>
2620 Operation of Buildings Services				
100 Personnel Services – Salaries				
100 Personnel Services – Salaries				1,756,783.78
Total Personnel Services – Salaries				\$1,756,783.78
200 Personnel Services – Employee Benefits				
210 Group Insurance – Contracted Provider				718,928.00
220 Social Security Contributions				129,871.97
230 PSERS Retirement Contributions				437,521.53
250 Unemployment Compensation				3,211.44
260 Workers' Compensation				16,757.00
Total Personnel Services – Employee Benefits				\$1,306,289.94
300 Purchased Professional and Technical Services				
324 Professional Educational Services – Employee Training and Development Services				300.00
330 Other Professional Services				8,594.75
Total Purchased Professional and Technical Services				\$8,894.75
400 Purchased Property Services				
410 Cleaning Services				1,942,004.56
420 Utility Services				1,409,435.16
430 Repairs and Maintenance Services				680,847.22
440 Rentals				500,094.63
Total Purchased Property Services				\$4,532,381.57
500 Other Purchased Services				
529 Other Insurance				7,957.00
530 Communications				92,598.53
580 Travel				3,925.92
Total Other Purchased Services				\$104,481.45
600 Supplies				
610 General Supplies	257,398.15	264,502.10		521,900.25
620 Energy				333,141.44
Total Supplies	\$257,398.15	\$264,502.10		\$855,041.69
700 Property				
750 Equipment – Original and Additional				3,480.00
760 Equipment – Replacement				23,216.87
Total Property				\$26,696.87
800 Other Objects				
810 Dues and Fees				5,571.00
Total Other Objects				\$5,571.00
Total 2620 Operation of Buildings Services	\$257,398.15	\$264,502.10		\$8,596,141.05

General Fund (10)

	<u>Elementary</u>	<u>Secondary</u>	<u>Federal</u>	<u>Total</u>
2630 Care and Upkeep of Grounds Services				
100 Personnel Services – Salaries				
100 Personnel Services – Salaries				541,601.27
Total Personnel Services – Salaries				\$541,601.27
200 Personnel Services – Employee Benefits				
210 Group Insurance – Contracted Provider				244,742.00
220 Social Security Contributions				39,851.72
230 PSERS Retirement Contributions				139,121.79
260 Workers' Compensation				5,203.00
Total Personnel Services – Employee Benefits				\$428,918.51
400 Purchased Property Services				
430 Repairs and Maintenance Services				181,395.08
Total Purchased Property Services				\$181,395.08
600 Supplies				
610 General Supplies	22,466.61	41,173.17		63,639.78
Total Supplies	\$22,466.61	\$41,173.17		\$63,639.78
700 Property				
750 Equipment – Original and Additional				1,904.31
760 Equipment – Replacement				52,700.87
Total Property				\$54,605.18
800 Other Objects				
810 Dues and Fees				50.00
Total Other Objects				\$50.00
Total 2630 Care and Upkeep of Grounds Services	\$22,466.61	\$41,173.17		\$1,270,209.82

General Fund (10)

2640 Care and Upkeep of Equipment Services

<u>Elementary</u>	<u>Secondary</u>	<u>Federal</u>	<u>Total</u>
-------------------	------------------	----------------	--------------

100 Personnel Services – Salaries

100 Personnel Services – Salaries			261,438.23
-----------------------------------	--	--	------------

Total Personnel Services – Salaries

\$261,438.23

200 Personnel Services – Employee Benefits

210 Group Insurance – Contracted Provider			107,074.00
---	--	--	------------

220 Social Security Contributions			19,235.36
-----------------------------------	--	--	-----------

230 PSERS Retirement Contributions			67,555.46
------------------------------------	--	--	-----------

250 Unemployment Compensation			14,994.46
-------------------------------	--	--	-----------

260 Workers' Compensation			2,499.00
---------------------------	--	--	----------

Total Personnel Services – Employee Benefits

\$211,358.28

300 Purchased Professional and Technical Services

324 Professional Educational Services – Employee Training and Development Services			950.00
--	--	--	--------

Total Purchased Professional and Technical Services

\$950.00

400 Purchased Property Services

430 Repairs and Maintenance Services			60,156.15
--------------------------------------	--	--	-----------

Total Purchased Property Services

\$60,156.15

500 Other Purchased Services

580 Travel			1,635.50
------------	--	--	----------

Total Other Purchased Services

\$1,635.50

600 Supplies

610 General Supplies	263.45	13,017.38	13,280.83
----------------------	--------	-----------	-----------

640 Books and Periodicals			2,500.00
---------------------------	--	--	----------

Total Supplies

\$263.45	\$13,017.38	\$15,780.83
-----------------	--------------------	--------------------

700 Property

750 Equipment – Original and Additional			2,084.31
---	--	--	----------

Total Property

\$2,084.31

800 Other Objects

810 Dues and Fees			240.00
-------------------	--	--	--------

Total Other Objects

\$240.00

Total 2640 Care and Upkeep of Equipment Services

\$263.45	\$13,017.38	\$553,643.30
-----------------	--------------------	---------------------

General Fund (10)

	<u>Elementary</u>	<u>Secondary</u>	<u>Federal</u>	<u>Total</u>
2660 Safety and Security Services				
100 Personnel Services – Salaries				
100 Personnel Services – Salaries				1,194,821.15
Total Personnel Services – Salaries				\$1,194,821.15
200 Personnel Services – Employee Benefits				
210 Group Insurance – Contracted Provider				31,333.00
220 Social Security Contributions				91,133.03
230 PSERS Retirement Contributions				305,271.46
260 Workers' Compensation				11,204.00
Total Personnel Services – Employee Benefits				\$438,941.49
400 Purchased Property Services				
430 Repairs and Maintenance Services				2,495.67
490 Other Purchased Property Services				6,510.00
Total Purchased Property Services				\$9,005.67
500 Other Purchased Services				
580 Travel				2,769.49
Total Other Purchased Services				\$2,769.49
600 Supplies				
610 General Supplies	29,966.03	10,539.49		40,505.52
Total Supplies	\$29,966.03	\$10,539.49		\$40,505.52
700 Property				
760 Equipment – Replacement				2,475.00
Total Property				\$2,475.00
Total 2660 Safety and Security Services	\$29,966.03	\$10,539.49		\$1,688,518.32

General Fund (10)

	<u>Elementary</u>	<u>Secondary</u>	<u>Federal</u>	<u>Total</u>
2700 Student Transportation Services				
100 Personnel Services – Salaries				
100 Personnel Services – Salaries				4,761,513.11
Total Personnel Services – Salaries				\$4,761,513.11
200 Personnel Services – Employee Benefits				
210 Group Insurance – Contracted Provider				223,557.65
220 Social Security Contributions				353,457.67
230 PSERS Retirement Contributions				1,217,313.38
250 Unemployment Compensation				9,394.71
260 Workers' Compensation				44,907.00
Total Personnel Services – Employee Benefits				\$1,848,630.41
300 Purchased Professional and Technical Services				
324 Professional Educational Services – Employee Training and Development Services				400.00
329 Professional Educational Services – Other				960.00
390 Other Purchased Professional and Technical Services				2,498.73
Total Purchased Professional and Technical Services				\$3,858.73
400 Purchased Property Services				
430 Repairs and Maintenance Services				146,060.87
440 Rentals				27,841.94
Total Purchased Property Services				\$173,902.81
500 Other Purchased Services				
513 Contracted Carriers				208,891.60
515 Public Carriers				60,994.52
516 Student Transportation Services From the IU				104,118.66
522 Automotive Liability Insurance				229,633.00
530 Communications				4,046.91
550 Printing and Binding				378.18
580 Travel				177.29
591 Services Purchased Locally				3,688.79
Total Other Purchased Services				\$611,928.95
600 Supplies				
610 General Supplies				348,596.75
620 Energy				472,605.88
640 Books and Periodicals				18,764.56
Total Supplies				\$839,967.19
700 Property				
760 Equipment – Replacement				733,306.22
Total Property				\$733,306.22
800 Other Objects				
810 Dues and Fees				702.99
Total Other Objects				\$702.99
Total 2700 Student Transportation Services				\$8,973,810.41

General Fund (10)

2710 Supervision of Student Transportation Services

Elementary

Secondary

Federal

Total

100 Personnel Services – Salaries

100 Personnel Services – Salaries

209,527.93

Total Personnel Services – Salaries

\$209,527.93

200 Personnel Services – Employee Benefits

210 Group Insurance – Contracted Provider

60,969.87

220 Social Security Contributions

15,759.37

230 PSERS Retirement Contributions

53,389.55

260 Workers' Compensation

2,007.39

Total Personnel Services – Employee Benefits

\$132,126.18

700 Property

760 Equipment – Replacement

3,563.25

Total Property

\$3,563.25

800 Other Objects

810 Dues and Fees

478.16

Total Other Objects

\$478.16

Total 2710 Supervision of Student Transportation Services

\$345,695.52

General Fund (10)

2711 Supervision of Student Transportation Services – Head of Component

Elementary

Secondary

Federal

Total

100 Personnel Services – Salaries

100 Personnel Services – Salaries

85,484.13

Total Personnel Services – Salaries

\$85,484.13

200 Personnel Services – Employee Benefits

210 Group Insurance – Contracted Provider

24,600.02

220 Social Security Contributions

6,441.42

230 PSERS Retirement Contributions

22,089.12

260 Workers' Compensation

820.82

Total Personnel Services – Employee Benefits

\$53,951.38

800 Other Objects

810 Dues and Fees

102.14

Total Other Objects

\$102.14

Total 2711 Supervision of Student Transportation Services – Head of Component

\$139,537.65

General Fund (10)

	<u>Elementary</u>	<u>Secondary</u>	<u>Federal</u>	<u>Total</u>
2719 Supervision of Student Transportation Services – All Other Supervision				
100 <u>Personnel Services – Salaries</u>				
100 Personnel Services – Salaries				124,043.80
Total Personnel Services – Salaries				\$124,043.80
200 <u>Personnel Services – Employee Benefits</u>				
210 Group Insurance – Contracted Provider				36,369.85
220 Social Security Contributions				9,317.95
230 PSERS Retirement Contributions				31,300.43
260 Workers' Compensation				1,186.57
Total Personnel Services – Employee Benefits				\$78,174.80
700 <u>Property</u>				
760 Equipment – Replacement				3,563.25
Total Property				\$3,563.25
800 <u>Other Objects</u>				
810 Dues and Fees				376.02
Total Other Objects				\$376.02
Total 2719 Supervision of Student Transportation Services – All Other Supervision				\$206,157.87

LEA : 125239452 Upper Darby SD

Printed 3/22/2017 1:08:05 PM

General Fund (10)

2720 Vehicle Operation Services

Elementary Secondary Federal Total

100 Personnel Services – Salaries

100 Personnel Services – Salaries 2,868,766.79

Total Personnel Services – Salaries

\$2,868,766.79

200 Personnel Services – Employee Benefits

210 Group Insurance – Contracted Provider 64,057.84

220 Social Security Contributions 212,164.33

230 PSERS Retirement Contributions 738,438.32

250 Unemployment Compensation 4,918.69

260 Workers' Compensation 27,123.93

Total Personnel Services – Employee Benefits

\$1,046,703.11

300 Purchased Professional and Technical Services

324 Professional Educational Services – Employee Training and Development Services 308.00

329 Professional Educational Services – Other 739.20

390 Other Purchased Professional and Technical Services 1,729.56

Total Purchased Professional and Technical Services

\$2,776.76

500 Other Purchased Services

513 Contracted Carriers 167,756.40

516 Student Transportation Services From the IU 80,171.37

Total Other Purchased Services

\$247,927.77

600 Supplies

610 General Supplies 1,589.92

640 Books and Periodicals 14,448.71

Total Supplies

\$16,038.63

700 Property

760 Equipment – Replacement 479.97

Total Property

\$479.97

Total 2720 Vehicle Operation Services

\$4,182,693.03

General Fund (10)

2730 Monitoring Services

Elementary

Secondary

Federal

Total

100 Personnel Services – Salaries

100 Personnel Services – Salaries

681,353.24

Total Personnel Services – Salaries

\$681,353.24

200 Personnel Services – Employee Benefits

220 Social Security Contributions

51,657.09

230 PSERS Retirement Contributions

167,887.12

250 Unemployment Compensation

3,006.80

260 Workers' Compensation

6,433.00

Total Personnel Services – Employee Benefits

\$228,984.01

Total 2730 Monitoring Services

\$910,337.25

General Fund (10)

2740 Vehicle Servicing and Maintenance Services

Elementary

Secondary

Federal

Total

100 Personnel Services – Salaries

100 Personnel Services – Salaries

111,221.16

Total Personnel Services – Salaries

\$111,221.16

200 Personnel Services – Employee Benefits

210 Group Insurance – Contracted Provider

47,111.68

220 Social Security Contributions

8,117.36

230 PSERS Retirement Contributions

28,580.01

260 Workers' Compensation

868.56

Total Personnel Services – Employee Benefits

\$84,677.61

300 Purchased Professional and Technical Services

390 Other Purchased Professional and Technical Services

194.46

Total Purchased Professional and Technical Services

\$194.46

400 Purchased Property Services

430 Repairs and Maintenance Services

112,466.87

440 Rentals

21,967.29

Total Purchased Property Services

\$134,434.16

500 Other Purchased Services

522 Automotive Liability Insurance

176,817.41

530 Communications

3,116.12

550 Printing and Binding

291.20

580 Travel

177.29

591 Services Purchased Locally

3,688.79

Total Other Purchased Services

\$184,090.81

600 Supplies

610 General Supplies

266,829.58

620 Energy

363,906.52

Total Supplies

\$630,736.10

700 Property

760 Equipment – Replacement

729,263.00

Total Property

\$729,263.00

Total 2740 Vehicle Servicing and Maintenance Services

\$1,874,617.30

General Fund (10)

	<u>Elementary</u>	<u>Secondary</u>	<u>Federal</u>	<u>Total</u>
2750 Nonpublic Transportation				
100 Personnel Services – Salaries				
100 Personnel Services – Salaries				890,643.99
Total Personnel Services – Salaries				\$890,643.99
200 Personnel Services – Employee Benefits				
210 Group Insurance – Contracted Provider				51,418.26
220 Social Security Contributions				65,759.52
230 PSERS Retirement Contributions				229,018.38
250 Unemployment Compensation				1,469.22
260 Workers' Compensation				8,474.12
Total Personnel Services – Employee Benefits				\$356,139.50
300 Purchased Professional and Technical Services				
324 Professional Educational Services – Employee Training and Development Services				92.00
329 Professional Educational Services – Other				220.80
390 Other Purchased Professional and Technical Services				574.71
Total Purchased Professional and Technical Services				\$887.51
400 Purchased Property Services				
430 Repairs and Maintenance Services				33,594.00
440 Rentals				5,874.65
Total Purchased Property Services				\$39,468.65
500 Other Purchased Services				
513 Contracted Carriers				41,135.20
515 Public Carriers				60,994.52
516 Student Transportation Services From the IU				23,947.29
522 Automotive Liability Insurance				52,815.59
530 Communications				930.79
550 Printing and Binding				86.98
Total Other Purchased Services				\$179,910.37
600 Supplies				
610 General Supplies				80,177.25
620 Energy				108,699.36
640 Books and Periodicals				4,315.85
Total Supplies				\$193,192.46
800 Other Objects				
810 Dues and Fees				224.83
Total Other Objects				\$224.83
Total 2750 Nonpublic Transportation				\$1,660,467.31

General Fund (10)

2800 Support Services – Central

	<u>Elementary</u>	<u>Secondary</u>	<u>Federal</u>	<u>Total</u>
100 Personnel Services – Salaries				
100 Personnel Services – Salaries			128,817.00	969,245.21
Total Personnel Services – Salaries			\$128,817.00	\$969,245.21
200 Personnel Services – Employee Benefits				
210 Group Insurance – Contracted Provider			17,978.25	209,095.16
220 Social Security Contributions			8,940.92	69,210.26
230 PSERS Retirement Contributions			16,643.13	250,453.26
240 Tuition Reimbursement				70,188.95
260 Workers' Compensation			1,238.00	9,306.00
290 Other Current Employee Benefits				53,000.00
Total Personnel Services – Employee Benefits			\$44,800.30	\$661,253.63
300 Purchased Professional and Technical Services				
324 Professional Educational Services – Employee Training and Development Services				2,995.00
330 Other Professional Services				189,320.75
340 Technical Services				128,033.28
Total Purchased Professional and Technical Services				\$320,349.03
400 Purchased Property Services				
430 Repairs and Maintenance Services			202.35	125,158.18
440 Rentals				9,678.84
Total Purchased Property Services			\$202.35	\$134,837.02
500 Other Purchased Services				
530 Communications				144.00
549 Other Advertising/Public Relations				1,363.24
580 Travel			623.21	9,308.33
Total Other Purchased Services			\$623.21	\$10,815.57
600 Supplies				
610 General Supplies			1,313.67	8,629.80
630 Food				5,746.29
640 Books and Periodicals				3,943.95
Total Supplies			\$1,313.67	\$18,320.04
700 Property				
760 Equipment – Replacement				104,249.23
Total Property				\$104,249.23
800 Other Objects				
810 Dues and Fees			50.00	8,039.10
Total Other Objects			\$50.00	\$8,039.10
Total 2800 Support Services – Central			\$175,806.53	\$2,227,108.83

General Fund (10)

	<u>Elementary</u>	<u>Secondary</u>	<u>Federal</u>	<u>Total</u>
2810 Planning, Research, Development and Evaluation Services				
100 Personnel Services – Salaries				
100 Personnel Services – Salaries				141,521.04
Total Personnel Services – Salaries				\$141,521.04
200 Personnel Services – Employee Benefits				
210 Group Insurance – Contracted Provider				31,954.44
220 Social Security Contributions				10,658.47
230 PSERS Retirement Contributions				36,569.02
260 Workers' Compensation				1,360.00
Total Personnel Services – Employee Benefits				\$80,541.93
300 Purchased Professional and Technical Services				
324 Professional Educational Services – Employee Training and Development Services				2,495.00
330 Other Professional Services				101,000.00
Total Purchased Professional and Technical Services				\$103,495.00
500 Other Purchased Services				
580 Travel				3,150.00
Total Other Purchased Services				\$3,150.00
600 Supplies				
640 Books and Periodicals				3,750.00
Total Supplies				\$3,750.00
Total 2810 Planning, Research, Development and Evaluation Services				\$332,457.97

General Fund (10)

2820 Information Services

Elementary Secondary Federal Total

100 Personnel Services – Salaries

100 Personnel Services – Salaries 168,666.00

Total Personnel Services – Salaries \$168,666.00

200 Personnel Services – Employee Benefits

210 Group Insurance – Contracted Provider 48,497.00

220 Social Security Contributions 12,672.96

230 PSERS Retirement Contributions 43,583.39

260 Workers' Compensation 1,614.00

Total Personnel Services – Employee Benefits \$106,367.35

300 Purchased Professional and Technical Services

324 Professional Educational Services – Employee Training and Development Services 125.00

340 Technical Services 52,598.00

Total Purchased Professional and Technical Services \$52,723.00

400 Purchased Property Services

430 Repairs and Maintenance Services 242.96

Total Purchased Property Services \$242.96

500 Other Purchased Services

580 Travel 1,312.45

Total Other Purchased Services \$1,312.45

600 Supplies

610 General Supplies 2,230.24

630 Food 5,746.29

640 Books and Periodicals 39.00

Total Supplies \$8,015.53

700 Property

760 Equipment – Replacement 7,958.00

Total Property \$7,958.00

800 Other Objects

810 Dues and Fees 470.00

Total Other Objects \$470.00

Total 2820 Information Services \$345,755.29

LEA : 125239452 Upper Darby SD

Printed 3/22/2017 1:08:05 PM

General Fund (10)

2821 Supervision of Information Services

Elementary

Secondary

Federal

Total

100 Personnel Services – Salaries

100 Personnel Services – Salaries

117,085.00

Total Personnel Services – Salaries

\$117,085.00

200 Personnel Services – Employee Benefits

210 Group Insurance – Contracted Provider

33,202.00

220 Social Security Contributions

8,780.46

230 PSERS Retirement Contributions

30,254.85

260 Workers' Compensation

1,125.00

Total Personnel Services – Employee Benefits

\$73,362.31

700 Property

760 Equipment – Replacement

1,559.00

Total Property

\$1,559.00

800 Other Objects

810 Dues and Fees

195.00

Total Other Objects

\$195.00

Total 2821 Supervision of Information Services

\$192,201.31

LEA : 125239452 Upper Darby SD

Printed 3/22/2017 1:08:05 PM

General Fund (10)

	<u>Elementary</u>	<u>Secondary</u>	<u>Federal</u>	<u>Total</u>
2823 Public Information Services				
300 <u>Purchased Professional and Technical Services</u>				
340 Technical Services				52,598.00
Total Purchased Professional and Technical Services				\$52,598.00
600 <u>Supplies</u>				
610 General Supplies				2,230.24
630 Food				5,746.29
Total Supplies				\$7,976.53
700 <u>Property</u>				
760 Equipment – Replacement				3,895.00
Total Property				\$3,895.00
Total 2823 Public Information Services				\$64,469.53

General Fund (10)

	<u>Elementary</u>	<u>Secondary</u>	<u>Federal</u>	<u>Total</u>
2824 Management Information Services				
300 <u>Purchased Professional and Technical Services</u>				
324 Professional Educational Services – Employee Training and Development Services				125.00
Total Purchased Professional and Technical Services				\$125.00
400 <u>Purchased Property Services</u>				
430 Repairs and Maintenance Services				242.96
Total Purchased Property Services				\$242.96
500 <u>Other Purchased Services</u>				
580 Travel				1,312.45
Total Other Purchased Services				\$1,312.45
600 <u>Supplies</u>				
640 Books and Periodicals				39.00
Total Supplies				\$39.00
800 <u>Other Objects</u>				
810 Dues and Fees				275.00
Total Other Objects				\$275.00
Total 2824 Management Information Services				\$1,994.41

General Fund (10)

2829 Other Information Services

Elementary

Secondary

Federal

Total

100 Personnel Services – Salaries

100 Personnel Services – Salaries

51,581.00

Total Personnel Services – Salaries

\$51,581.00

200 Personnel Services – Employee Benefits

210 Group Insurance – Contracted Provider

15,295.00

220 Social Security Contributions

3,892.50

230 PSERS Retirement Contributions

13,328.54

260 Workers' Compensation

489.00

Total Personnel Services – Employee Benefits

\$33,005.04

700 Property

760 Equipment – Replacement

2,504.00

Total Property

\$2,504.00

Total 2829 Other Information Services

\$87,090.04

General Fund (10)

2830 Staff Services

Elementary Secondary Federal Total

100 Personnel Services – Salaries
100 Personnel Services – Salaries 345,738.00

Total Personnel Services – Salaries \$345,738.00

200 Personnel Services – Employee Benefits
210 Group Insurance – Contracted Provider 63,476.98
220 Social Security Contributions 22,956.54
230 PSERS Retirement Contributions 89,338.89
240 Tuition Reimbursement 70,188.95
260 Workers' Compensation 3,322.00

Total Personnel Services – Employee Benefits \$249,283.36

300 Purchased Professional and Technical Services
324 Professional Educational Services – Employee Training and Development Services 75.00
330 Other Professional Services 53,320.75
340 Technical Services 11,541.38

Total Purchased Professional and Technical Services \$64,937.13

500 Other Purchased Services
530 Communications 144.00
549 Other Advertising/Public Relations 1,363.24
580 Travel 1,966.73

Total Other Purchased Services \$3,473.97

600 Supplies
610 General Supplies 4,101.73
640 Books and Periodicals 154.95

Total Supplies \$4,256.68

700 Property
760 Equipment – Replacement 1,335.00

Total Property \$1,335.00

800 Other Objects
810 Dues and Fees 7,154.10

Total Other Objects \$7,154.10

Total 2830 Staff Services \$676,178.24

General Fund (10)

2831 Supervision of Staff Services

Elementary

Secondary

Federal

Total

100 Personnel Services – Salaries

100 Personnel Services – Salaries

232,433.00

Total Personnel Services – Salaries

\$232,433.00

200 Personnel Services – Employee Benefits

210 Group Insurance – Contracted Provider

33,043.98

220 Social Security Contributions

14,384.71

230 PSERS Retirement Contributions

60,060.78

260 Workers' Compensation

2,233.00

Total Personnel Services – Employee Benefits

\$109,722.47

700 Property

760 Equipment – Replacement

1,335.00

Total Property

\$1,335.00

800 Other Objects

810 Dues and Fees

3,497.00

Total Other Objects

\$3,497.00

Total 2831 Supervision of Staff Services

\$346,987.47

General Fund (10)

2833 Staff Accounting Services

Elementary

Secondary

Federal

Total

100 Personnel Services – Salaries

100 Personnel Services – Salaries

113,305.00

Total Personnel Services – Salaries

\$113,305.00

200 Personnel Services – Employee Benefits

210 Group Insurance – Contracted Provider

30,433.00

220 Social Security Contributions

8,571.83

230 PSERS Retirement Contributions

29,278.11

260 Workers' Compensation

1,089.00

Total Personnel Services – Employee Benefits

\$69,371.94

300 Purchased Professional and Technical Services

324 Professional Educational Services – Employee Training and Development Services

75.00

340 Technical Services

11,541.38

Total Purchased Professional and Technical Services

\$11,616.38

500 Other Purchased Services

530 Communications

144.00

549 Other Advertising/Public Relations

1,363.24

580 Travel

1,966.73

Total Other Purchased Services

\$3,473.97

600 Supplies

610 General Supplies

4,101.73

640 Books and Periodicals

154.95

Total Supplies

\$4,256.68

800 Other Objects

810 Dues and Fees

3,657.10

Total Other Objects

\$3,657.10

Total 2833 Staff Accounting Services

\$205,681.07

General Fund (10)

2834 Staff Development Services – Non-Instructional, Certified Staff Only

Elementary

Secondary

Federal

Total

200 Personnel Services – Employee Benefits

240 Tuition Reimbursement

49,242.20

Total Personnel Services – Employee Benefits

\$49,242.20

Total 2834 Staff Development Services – Non-Instructional, Certified Staff Only

\$49,242.20

LEA : 125239452 Upper Darby SD

Printed 3/22/2017 1:08:05 PM

General Fund (10)

2835 Health Services

Elementary

Secondary

Federal

Total

300 Purchased Professional and Technical Services

330 Other Professional Services

53,320.75

Total Purchased Professional and Technical Services

\$53,320.75

Total 2835 Health Services

\$53,320.75

General Fund (10)

	<u>Elementary</u>	<u>Secondary</u>	<u>Federal</u>	<u>Total</u>
2836 Staff Development Services – Non-Instructional, Non-Certified Staff Only				
200 Personnel Services – Employee Benefits				
240 Tuition Reimbursement				20,946.75
Total Personnel Services – Employee Benefits				\$20,946.75
Total 2836 Staff Development Services – Non-Instructional, Non-Certified Staff Only				\$20,946.75

General Fund (10)

2840 Data Processing Services

Elementary Secondary Federal Total

100 Personnel Services – Salaries

100 Personnel Services – Salaries 184,503.17

Total Personnel Services – Salaries \$184,503.17

200 Personnel Services – Employee Benefits

210 Group Insurance – Contracted Provider 47,188.49

220 Social Security Contributions 13,981.37

230 PSERS Retirement Contributions 47,675.70

260 Workers' Compensation 1,772.00

290 Other Current Employee Benefits 53,000.00

Total Personnel Services – Employee Benefits \$163,617.56

300 Purchased Professional and Technical Services

324 Professional Educational Services – Employee Training and Development Services 300.00

330 Other Professional Services 35,000.00

340 Technical Services 63,893.90

Total Purchased Professional and Technical Services \$99,193.90

400 Purchased Property Services

430 Repairs and Maintenance Services 124,712.87

440 Rentals 9,678.84

Total Purchased Property Services \$134,391.71

500 Other Purchased Services

580 Travel 2,255.94

Total Other Purchased Services \$2,255.94

600 Supplies

610 General Supplies 984.16

Total Supplies \$984.16

700 Property

760 Equipment – Replacement 94,956.23

Total Property \$94,956.23

800 Other Objects

810 Dues and Fees 305.00

Total Other Objects \$305.00

Total 2840 Data Processing Services \$680,207.67

General Fund (10)

2850 State and Federal Agency Liaison Services

<u>Elementary</u>	<u>Secondary</u>	<u>Federal</u>	<u>Total</u>
-------------------	------------------	----------------	--------------

100 Personnel Services – Salaries

100 Personnel Services – Salaries		128,817.00	128,817.00
-----------------------------------	--	------------	------------

Total Personnel Services – Salaries

		\$128,817.00	\$128,817.00
--	--	---------------------	---------------------

200 Personnel Services – Employee Benefits

210 Group Insurance – Contracted Provider		17,978.25	17,978.25
---	--	-----------	-----------

220 Social Security Contributions		8,940.92	8,940.92
-----------------------------------	--	----------	----------

230 PSERS Retirement Contributions		16,643.13	33,286.26
------------------------------------	--	-----------	-----------

260 Workers' Compensation		1,238.00	1,238.00
---------------------------	--	----------	----------

Total Personnel Services – Employee Benefits

		\$44,800.30	\$61,443.43
--	--	--------------------	--------------------

400 Purchased Property Services

430 Repairs and Maintenance Services		202.35	202.35
--------------------------------------	--	--------	--------

Total Purchased Property Services

		\$202.35	\$202.35
--	--	-----------------	-----------------

500 Other Purchased Services

580 Travel		623.21	623.21
------------	--	--------	--------

Total Other Purchased Services

		\$623.21	\$623.21
--	--	-----------------	-----------------

600 Supplies

610 General Supplies		1,313.67	1,313.67
----------------------	--	----------	----------

Total Supplies

		\$1,313.67	\$1,313.67
--	--	-------------------	-------------------

800 Other Objects

810 Dues and Fees		50.00	110.00
-------------------	--	-------	--------

Total Other Objects

		\$50.00	\$110.00
--	--	----------------	-----------------

Total 2850 State and Federal Agency Liaison Services

		\$175,806.53	\$192,509.66
--	--	---------------------	---------------------

General Fund (10)

2900 Other Support Services

Elementary

Secondary

Federal

Total

500 Other Purchased Services

595 IU Payments By Withholding

94,829.27

Total Other Purchased Services

\$94,829.27

Total 2900 Other Support Services

\$94,829.27

General Fund (10)

2910 Support Services Not Listed Elsewhere In the 2000 Series

Elementary

Secondary

Federal

Total

500 Other Purchased Services

595 IU Payments By Withholding

94,829.27

Total Other Purchased Services

\$94,829.27

Total 2910 Support Services Not Listed Elsewhere In the 2000 Series

\$94,829.27

LEA : 125239452 Upper Darby SD

Printed 3/22/2017 1:08:07 PM

General Fund (10)

3000 Operation of Non-Instructional Services

Total

100 Personnel Services – Salaries

100 Personnel Services – Salaries 3,039,823.66

Total Personnel Services – Salaries

\$3,039,823.66

200 Personnel Services – Employee Benefits

210 Group Insurance – Contracted Provider 184,572.00

220 Social Security Contributions 230,045.56

230 PSERS Retirement Contributions 525,063.75

250 Unemployment Compensation 3,100.01

260 Workers’ Compensation 28,314.00

290 Other Current Employee Benefits 15,000.00

Total Personnel Services – Employee Benefits

\$986,095.32

300 Purchased Professional and Technical Services

322 Professional Educational Services – Ius 1,232.22

329 Professional Educational Services – Other 290.00

330 Other Professional Services 88,000.00

340 Technical Services 12,640.00

390 Other Purchased Professional and Technical Services 127,552.61

Total Purchased Professional and Technical Services

\$229,714.83

400 Purchased Property Services

430 Repairs and Maintenance Services 33,004.01

440 Rentals 32,007.79

Total Purchased Property Services

\$65,011.80

500 Other Purchased Services

520 Insurance – General 45,912.25

530 Communications 26,710.53

549 Other Advertising/Public Relations 22,470.95

550 Printing and Binding 17,622.81

580 Travel 1,631.10

592 Services Purchased From Another LEA Within the State 5,782.06

599 Other Miscellaneous Purchased Services 112,704.26

Total Other Purchased Services

\$232,833.96

600 Supplies

610 General Supplies 203,675.96

630 Food 18,151.74

640 Books and Periodicals 12,731.76

Total Supplies

\$234,559.46

700 Property

760 Equipment – Replacement 9,641.00

Total Property

\$9,641.00

800 Other Objects

810 Dues and Fees 9,004.00

LEA : 125239452 Upper Darby SD

Printed 3/22/2017 1:08:07 PM

General Fund (10)

3000 Operation of Non-Instructional Services

Total

800 Other Objects

890 Miscellaneous Expenditures

852.99

Total Other Objects

\$9,856.99

Total 3000 Operation of Non-Instructional Services

\$4,807,537.02

General Fund (10)

3200 Student Activities

	<u>Elementary</u>	<u>Secondary</u>	<u>Federal</u>	<u>Total</u>
100 Personnel Services – Salaries				
100 Personnel Services – Salaries				1,133,650.07
Total Personnel Services – Salaries				\$1,133,650.07
200 Personnel Services – Employee Benefits				
210 Group Insurance – Contracted Provider				30,433.00
220 Social Security Contributions				85,331.46
230 PSERS Retirement Contributions				260,432.49
250 Unemployment Compensation				369.20
260 Workers' Compensation				10,675.00
290 Other Current Employee Benefits				15,000.00
Total Personnel Services – Employee Benefits				\$402,241.15
300 Purchased Professional and Technical Services				
330 Other Professional Services				23,000.00
390 Other Purchased Professional and Technical Services				6,108.45
Total Purchased Professional and Technical Services				\$29,108.45
400 Purchased Property Services				
430 Repairs and Maintenance Services				26,975.34
Total Purchased Property Services				\$26,975.34
500 Other Purchased Services				
520 Insurance – General				45,912.25
530 Communications				490.00
550 Printing and Binding				38.40
580 Travel				1,313.65
592 Services Purchased From Another LEA Within the State				5,782.06
599 Other Miscellaneous Purchased Services				112,704.26
Total Other Purchased Services				\$166,240.62
600 Supplies				
610 General Supplies				125,403.02
640 Books and Periodicals				2,649.00
Total Supplies				\$128,052.02
700 Property				
760 Equipment – Replacement				5,300.00
Total Property				\$5,300.00
800 Other Objects				
810 Dues and Fees				8,689.00
890 Miscellaneous Expenditures			852.99	852.99
Total Other Objects			\$852.99	\$9,541.99
Total 3200 Student Activities			\$852.99	\$1,901,109.64

LEA : 125239452 Upper Darby SD

Printed 3/22/2017 1:08:07 PM

Page - 4 of 4

General Fund (10)**3300 Community Services**ElementarySecondaryFederalTotal**100 Personnel Services – Salaries**

100 Personnel Services – Salaries

1,906,173.59

Total Personnel Services – Salaries**\$1,906,173.59****200 Personnel Services – Employee Benefits**

210 Group Insurance – Contracted Provider

154,139.00

220 Social Security Contributions

144,714.10

230 PSERS Retirement Contributions

264,631.26

250 Unemployment Compensation

2,730.81

260 Workers' Compensation

17,639.00

Total Personnel Services – Employee Benefits**\$583,854.17****300 Purchased Professional and Technical Services**

322 Professional Educational Services – lus

1,232.22

1,232.22

329 Professional Educational Services – Other

290.00

330 Other Professional Services

65,000.00

340 Technical Services

12,640.00

390 Other Purchased Professional and Technical Services

121,444.16

Total Purchased Professional and Technical Services**\$1,232.22****\$200,606.38****400 Purchased Property Services**

430 Repairs and Maintenance Services

6,028.67

440 Rentals

32,007.79

Total Purchased Property Services**\$38,036.46****500 Other Purchased Services**

530 Communications

26,220.53

549 Other Advertising/Public Relations

22,470.95

550 Printing and Binding

17,584.41

580 Travel

317.45

Total Other Purchased Services**\$66,593.34****600 Supplies**

610 General Supplies

19,489.10

78,272.94

630 Food

18,151.74

18,151.74

640 Books and Periodicals

7,997.76

10,082.76

Total Supplies**\$45,638.60****\$106,507.44****700 Property**

760 Equipment – Replacement

4,341.00

Total Property**\$4,341.00****800 Other Objects**

810 Dues and Fees

315.00

Total Other Objects**\$315.00****Total 3300 Community Services****\$46,870.82****\$2,906,427.38**

General Fund (10)

4000 Facilities Acquisition, Construction and Improvement Services

Total

300 Purchased Professional and Technical Services

330 Other Professional Services

72,320.65

Total Purchased Professional and Technical Services

\$72,320.65

400 Purchased Property Services

450 Construction Services

296,300.00

Total Purchased Property Services

\$296,300.00

500 Other Purchased Services

549 Other Advertising/Public Relations

3,565.36

Total Other Purchased Services

\$3,565.36

700 Property

750 Equipment – Original and Additional

282,243.47

760 Equipment – Replacement

230,276.00

Total Property

\$512,519.47

Total 4000 Facilities Acquisition, Construction and Improvement Services

\$884,705.48

LEA : 125239452 Upper Darby SD

Printed 3/22/2017 1:08:08 PM

General Fund (10)

	<u>Elementary</u>	<u>Secondary</u>	<u>Federal</u>	<u>Total</u>
4200 Existing Site Improvement Services				
400 <u>Purchased Property Services</u>				
450 Construction Services				72,300.00
Total Purchased Property Services				\$72,300.00
500 <u>Other Purchased Services</u>				
549 Other Advertising/Public Relations				289.03
Total Other Purchased Services				\$289.03
700 <u>Property</u>				
760 Equipment – Replacement				230,276.00
Total Property				\$230,276.00
Total 4200 Existing Site Improvement Services				\$302,865.03

General Fund (10)

	<u>Elementary</u>	<u>Secondary</u>	<u>Federal</u>	<u>Total</u>
4400 Architecture and Engineering Services / Educational Specifications – Improvements				
300 <u>Purchased Professional and Technical Services</u>				
330 Other Professional Services				72,320.65
Total Purchased Professional and Technical Services				\$72,320.65
500 <u>Other Purchased Services</u>				
549 Other Advertising/Public Relations				3,276.33
Total Other Purchased Services				\$3,276.33
Total 4400 Architecture and Engineering Services / Educational Specifications – Improvements				\$75,596.98

LEA : 125239452 Upper Darby SD

Printed 3/22/2017 1:08:08 PM

General Fund (10)

	<u>Elementary</u>	<u>Secondary</u>	<u>Federal</u>	<u>Total</u>
4600 Existing Building Improvement Services				
400 <u>Purchased Property Services</u>				
450 Construction Services				224,000.00
Total Purchased Property Services				\$224,000.00
700 <u>Property</u>				
750 Equipment – Original and Additional				282,243.47
Total Property				\$282,243.47
Total 4600 Existing Building Improvement Services				\$506,243.47

LEA : 125239452 Upper Darby SD

Printed 3/22/2017 1:08:10 PM

General Fund (10)

5000 Other Expenditures and Financing Uses

Total

800 Other Objects

830 Interest	1,192,064.51
880 Refunds of Prior Years' Receipts	99.74

Total Other Objects	\$1,192,164.25
----------------------------	-----------------------

900 Other Uses of Funds

910 Redemption of Principal	4,633,339.20
920 Authority Obligations	230,809.00

Total Other Uses of Funds	\$4,864,148.20
----------------------------------	-----------------------

Total 5000 Other Expenditures and Financing Uses	\$6,056,312.45
---	-----------------------

LEA : 125239452 Upper Darby SD

Printed 3/22/2017 1:08:10 PM

General Fund (10)

	<u>Elementary</u>	<u>Secondary</u>	<u>Federal</u>	<u>Total</u>
5100 Debt Service / Other Expenditures and Financing Uses				
800 Other Objects				
830 Interest			246,296.93	1,192,064.51
880 Refunds of Prior Years' Receipts				99.74
Total Other Objects			\$246,296.93	\$1,192,164.25
900 Other Uses of Funds				
910 Redemption of Principal				4,633,339.20
920 Authority Obligations				230,809.00
Total Other Uses of Funds				\$4,864,148.20
Total 5100 Debt Service / Other Expenditures and Financing Uses			\$246,296.93	\$6,056,312.45

LEA : 125239452 Upper Darby SD

Printed 3/22/2017 1:08:10 PM

General Fund (10)

	<u>Elementary</u>	<u>Secondary</u>	<u>Federal</u>	<u>Total</u>
5110 Debt Service				
800 Other Objects				
830 Interest			246,296.93	1,192,064.51
Total Other Objects			\$246,296.93	\$1,192,064.51
900 Other Uses of Funds				
910 Redemption of Principal				4,633,339.20
920 Authority Obligations				230,809.00
Total Other Uses of Funds				\$4,864,148.20
Total 5110 Debt Service			\$246,296.93	\$6,056,212.71

LEA : 125239452 Upper Darby SD

Printed 3/22/2017 1:08:10 PM

General Fund (10)

	<u>Elementary</u>	<u>Secondary</u>	<u>Federal</u>	<u>Total</u>
5130 Refund of Prior Year Revenues / Receipts				
800 <u>Other Objects</u>				
880 Refunds of Prior Years' Receipts				99.74
Total Other Objects				\$99.74
Total 5130 Refund of Prior Year Revenues / Receipts				\$99.74

LEA : 125239452 Upper Darby SD

Printed 3/22/2017 1:08:09 PM

Capital Reserve Fund - § 1431 (32)

4000 Facilities Acquisition, Construction and Improvement Services

Total

300 Purchased Professional and Technical Services

330 Other Professional Services 43,297.50

Total Purchased Professional and Technical Services

\$43,297.50

400 Purchased Property Services

450 Construction Services 525,767.82

Total Purchased Property Services

\$525,767.82

700 Property

750 Equipment – Original and Additional 136,504.72

Total Property

\$136,504.72

Total 4000 Facilities Acquisition, Construction and Improvement Services

\$705,570.04

LEA : 125239452 Upper Darby SD

Printed 3/22/2017 1:08:09 PM

Capital Reserve Fund - § 1431 (32)

4400 Architecture and Engineering Services / Educational Specifications – Improvements

Elementary

Secondary

Federal

Total

300 Purchased Professional and Technical Services

330 Other Professional Services

43,297.50

Total Purchased Professional and Technical Services

\$43,297.50

Total 4400 Architecture and Engineering Services / Educational Specifications – Improvements

\$43,297.50

LEA : 125239452 Upper Darby SD

Printed 3/22/2017 1:08:09 PM

Capital Reserve Fund - § 1431 (32)

	<u>Elementary</u>	<u>Secondary</u>	<u>Federal</u>	<u>Total</u>
4600 Existing Building Improvement Services				
400 <u>Purchased Property Services</u>				
450 Construction Services				525,767.82
Total Purchased Property Services				\$525,767.82
700 <u>Property</u>				
750 Equipment – Original and Additional				136,504.72
Total Property				\$136,504.72
Total 4600 Existing Building Improvement Services				\$662,272.54

	<u>General Fund(10)</u>	<u>Public Purpose Trust(27)</u>	<u>Other Compt Approved (28)</u>	<u>Athletic / Activity(29)</u>	<u>Capital Reserve (690, 1850)(31)</u>
1000 Instruction					
1100 Regular Programs - Elementary / Secondary	78,878,570.14				
1200 Special Programs - Elementary / Secondary	38,572,308.49				
1300 Vocational Education	1,334,332.12				
1400 Other Instructional Programs - Elementary / Secondary	2,205,742.45				
1600 Adult Education Programs	20,000.00				
1700 Higher Education Programs	829,840.00				
Total Instruction	\$121,840,793.20				
2000 Support Services					
2100 Support Services - Students	6,466,571.37				
2200 Support Services - Instructional Staff	4,699,334.04				
2300 Support Services - Administration	9,075,400.90				
2400 Support Services - Pupil Health	1,675,496.08				
2500 Support Services - Business	1,647,184.05				
2600 Operation and Maintenance of Plant Services	12,598,245.93				
2700 Student Transportation Services	8,973,810.41				
2800 Support Services - Central	2,227,108.83				
2900 Other Support Services	94,829.27				
Total Support Services	\$47,457,980.88				
3000 Operation of Non-Instructional Services					
3200 Student Activities	1,901,109.64				
3300 Community Services	2,906,427.38				
Total Operation of Non-Instructional Services	\$4,807,537.02				
4000 Facilities Acquisition, Construction and Improvement Services					
4200 Existing Site Improvement Services	302,865.03				
4400 Architecture and Engineering Services / Educational Specifications - Improvements	75,596.98				
4600 Existing Building Improvement Services	506,243.47				
Total Facilities Acquisition, Construction and Improvement Services	\$884,705.48				
5000 Other Expenditures and Financing Uses					
5100 Debt Service / Other Expenditures and Financing Uses	6,056,312.45				
Total Other Expenditures and Financing Uses	\$6,056,312.45				
TOTAL ACTUAL EXPENDITURES & OTHER FINANCING USES	\$181,047,329.03				

LEA : 125239452 Upper Darby SD

Printed 3/22/2017 1:08:11 PM

	<u>Capital Reserve (1431)(32)</u>	<u>Other Capital Projects Fund(39)</u>	<u>Debt Service(40)</u>	<u>Permanent(90)</u>	<u>Total</u>
1000 Instruction					
1100 Regular Programs - Elementary / Secondary					78,878,570.14
1200 Special Programs - Elementary / Secondary					38,572,308.49
1300 Vocational Education					1,334,332.12
1400 Other Instructional Programs - Elementary / Secondary					2,205,742.45
1600 Adult Education Programs					20,000.00
1700 Higher Education Programs					829,840.00
Total Instruction					\$121,840,793.20
2000 Support Services					
2100 Support Services - Students					6,466,571.37
2200 Support Services - Instructional Staff					4,699,334.04
2300 Support Services - Administration					9,075,400.90
2400 Support Services - Pupil Health					1,675,496.08
2500 Support Services - Business					1,647,184.05
2600 Operation and Maintenance of Plant Services					12,598,245.93
2700 Student Transportation Services					8,973,810.41
2800 Support Services - Central					2,227,108.83
2900 Other Support Services					94,829.27
Total Support Services					\$47,457,980.88
3000 Operation of Non-Instructional Services					
3200 Student Activities					1,901,109.64
3300 Community Services					2,906,427.38
Total Operation of Non-Instructional Services					\$4,807,537.02
4000 Facilities Acquisition, Construction and Improvement Services					
4200 Existing Site Improvement Services					302,865.03
4400 Architecture and Engineering Services / Educational Specifications - Improvements	43,297.50				118,894.48
4600 Existing Building Improvement Services	662,272.54				1,168,516.01
Total Facilities Acquisition, Construction and Improvement Services	\$705,570.04				\$1,590,275.52
5000 Other Expenditures and Financing Uses					
5100 Debt Service / Other Expenditures and Financing Uses					6,056,312.45
Total Other Expenditures and Financing Uses					\$6,056,312.45
TOTAL ACTUAL EXPENDITURES & OTHER FINANCING USES	\$705,570.04				\$181,752,899.07

LEA : 125239452 Upper Darby SD

Printed 3/22/2017 1:08:14 PM

PSERS Salary Data (Salary Data should relate to the General Fund only)

Amount Description	Amount
Total Salary Base for salaries subject to PSERS withholding	79,347,756.00
Total Federally Funded salaries subject to PSERS withholding	3,317,913.00
	<hr/>

Title I Expenditure Data

Amount Description	Amount
Expenditures Funded with Current Title I Funds	3,687,463.61
Expenditures Funded with Carry over Title I Funds	306,824.54
	<hr/>
Total Title I Expenditure Data	\$3,994,288.15
	<hr/>

Title I ARRA Amount

Amount Description	Amount
Portion of Total Title I Expenditures funded with ARRA Title I	<hr/>

Function	Object	Amount
1100	400	92.40
1100	610	3,013.17
3200	610	14,804.08

Note: Only reimbursable encumbrances will be included in your Actual Instructional Expense calculation

TOTAL ENCUMBRANCES: \$17,909.65

Benefits for Staff Relative to Collective Bargaining Agreements

	OBJECT	COVERED	NOT COVERED	TOTAL
10 General Fund	No Self Insurance data to report			
	211 Medical Insurance	14,094,692.96	1,043,034.07	15,137,727.03
	212 Dental Insurance	771,941.92	69,789.86	841,731.78
	215 Eye Care Insurance	63,439.98	5,272.50	68,712.48
	216 Prescription Insurance	3,479,528.67	253,748.20	3,733,276.87
	271 Self-Insurance Medical Benefits			
	272 Self-Insurance Dental Benefits			
	275 Self-Insurance Eye Care Benefits			
	276 Self-Insurance Prescription Benefits			
	FUND TOTAL		\$18,409,603.53	\$1,371,844.63
50 Enterprise Fund	No Self Insurance data to report			
	211 Medical Insurance			
	212 Dental Insurance			
	215 Eye Care Insurance			
	216 Prescription Insurance			
	271 Self-Insurance Medical Benefits			
	272 Self-Insurance Dental Benefits			
	275 Self-Insurance Eye Care Benefits			
	276 Self-Insurance Prescription Benefits			
	FUND TOTAL			
60 Internal Service Fund	No Self Insurance data to report			
	211 Medical Insurance			
	212 Dental Insurance			
	215 Eye Care Insurance			
	216 Prescription Insurance			
	271 Self-Insurance Medical Benefits			
	272 Self-Insurance Dental Benefits			
	275 Self-Insurance Eye Care Benefits			
	276 Self-Insurance Prescription Benefits			
	FUND TOTAL			
Total of All Funds		\$18,409,603.53	\$1,371,844.63	\$19,781,448.16

LEA : 125239452 Upper Darby SD

Printed 3/22/2017 1:08:16 PM

Function	Special Education (Prior Year)	Nonspecial Education (Prior Year)	Total (Prior Year)	Special Education (Current Year)	Nonspecial Education (Current Year)	Total (Current Year)
2120 Guidance Services	351,421.91	1,907,394.54	2,258,816.45	372,765.69	1,886,051.57	2,258,817.26
2140 Psychological Services	852,923.52	365,538.67	1,218,462.19	1,020,625.15	437,410.82	1,458,035.97
2150 Speech Pathology and Audiology Services						
2160 Social Work Services	266,691.65	1,343,025.07	1,609,716.72	283,602.69	1,375,185.29	1,658,787.98
2260 Instruction and Curriculum Development Services	402,562.24	1,376,808.47	1,779,370.71	423,472.01	1,463,030.57	1,886,502.58
2350 Legal and Accounting Services	121,837.94	339,863.73	461,701.67	104,145.85	357,858.83	462,004.68
2420 Medical Services					743.00	743.00
2440 Nursing Services	227,050.38	1,130,589.36	1,357,639.74	246,645.47	1,179,733.55	1,426,379.02
2700 Student Transportation Services	3,497,927.22	4,864,255.18	8,362,182.40	3,678,151.61	3,421,041.50	7,099,193.11
Total	\$5,720,414.86	\$11,327,475.02	\$17,047,889.88	\$6,129,408.47	\$10,121,055.13	\$16,250,463.60

LEA : 125239452 Upper Darby SD

Printed 3/22/2017 1:08:16 PM

(PRINCIPAL AMOUNTS ONLY)

ALL GOVERNMENTAL FUND TYPES

	Short-Term Borrowing	General Obligation Bonds/Notes	Authority Building Obligations	Other Long-Term Debt	Other Post- Employment Benefits (OPEB)	Compensated Absences	Net Pension Liability	Total
1. Debt at Beginning of Fiscal Year		29,985,095.00	2,833,315.00	3,505,781.00	2,735,578.00	2,684,770.00	191,091,000.00	232,835,539.00
2. Additional Debt Incurred During Year				1,800,947.00	1,099,483.00	13,298.00	86,964,460.00	89,878,188.00
3. Retirements and Repayments		3,002,192.00	158,378.00	1,631,149.00	565,026.00	216,191.00	20,503,460.00	26,076,396.00
4. Debt at End of Fiscal Year		26,982,903.00	2,674,937.00	3,675,579.00	3,270,035.00	2,481,877.00	257,552,000.00	296,637,331.00
5. Accreted Interest at End Of Fiscal Year								
6. Total Debt and Accreted Interest		26,982,903.00	2,674,937.00	3,675,579.00	3,270,035.00	2,481,877.00	257,552,000.00	296,637,331.00
7. Current Portion P&I - Due within 1 year		4,178,005.00	1,373,984.00	1,502,996.00	671,159.00	275,520.00	24,697,290.00	32,698,954.00
8. Interest Paid during current fiscal year		1,156,741.00	72,431.00	35,324.00				1,264,496.00

(PRINCIPAL AMOUNTS ONLY)

ALL PROPRIETARY FUND TYPES

- 1. Debt at Beginning of Fiscal Year
- 2. Additional Debt Incurred During Year
- 3. Retirements and Repayments
- 4. Debt at End of Fiscal Year
- 5. Accreted Interest at End Of Fiscal Year
- 6. Total Debt and Accreted Interest
- 7. Current Portion P&I - Due within 1 year
- 8. Interest Paid during current fiscal year

Total Principal and Interest Payments Made by Your School - All Funds

Function	Fund		Principal (910)	Principal (920)	Interest (830)	Total (Principal +Interest)	Misc Other Uses (990)
5110	10	General Fund	4,633,339.20	230,809.00	1,192,064.51	6,056,212.71	
5110	20	Special Revenue Funds					
5110	30	Capital Projects Funds					
5110	40	Debt Service Fund					
5110	90	Permanent Fund					
5120	10	General Fund					
5120	20	Special Revenue Funds					
5120	30	Capital Projects Funds					
5120	40	Debt Service Fund					
Total Debt Payments - Governmental Funds			\$4,633,339.20	\$230,809.00	\$1,192,064.51	\$6,056,212.71	

Function	Fund		Principal (910)	Principal (920)	Interest (830)	Total (Principal +Interest)	Misc Other Uses (990)
5110	50	Enterprise Fund					
5110	60	Internal Service Fund					
5120	50	Enterprise Fund					
5120	60	Internal Service Fund					
Total Debt Payments - Proprietary Funds							

LEA : 125239452 Upper Darby SD

Printed 3/22/2017 1:08:16 PM

Bond Details
Governmental Funds

Debt Category	Debt Issue Date (MM/YYYY)	Debt at Beginning of Fiscal Year	Principal Amounts Only			Current Portion Due Within One Year (Principal and Interest)	Interest Paid During Fiscal Year
			Additions	Reductions / Repayments	Debt at End of Fiscal Year		
General Obligation Bonds/Notes – CIB	10/2010	3,732,666.00		339,335.00	3,393,331.00	593,833.00	254,500.00
General Obligation Bonds/Notes – CIB	11/2011	295,429.00		26,857.00	268,572.00	45,988.00	19,131.00
General Obligation Bonds/Notes – CIB	12/2012	4,370,000.00		5,000.00	4,365,000.00	93,088.00	88,088.00
General Obligation Bonds/Notes – CIB	7/2014	1,877,000.00		1,000.00	1,876,000.00	40,771.00	39,792.00
General Obligation Bonds/Notes – CIB	5/2015	19,710,000.00		2,630,000.00	17,080,000.00	3,404,325.00	755,230.00
Authority Building Obligations – CIB	3/2008	1,625,074.00		59,633.00	1,565,441.00	1,272,574.00	67,621.00
Authority Building Obligations – CIB	12/2011	89,486.00		12,798.00	76,688.00	15,062.00	2,264.00
Authority Building Obligations – CIB	4/2013	127,196.00		15,900.00	111,296.00	18,111.00	2,546.00
Authority Building Obligations – CIB	9/2014	991,559.00		70,047.00	921,512.00	68,237.00	
Other Long Term Debt/Liabilities		3,505,781.00	1,800,947.00	1,631,149.00	3,675,579.00	1,502,996.00	35,324.00
Compensated Absences		2,684,770.00	13,298.00	216,191.00	2,481,877.00	275,520.00	
Other Post-Employment Benefits (OPEB)		2,735,578.00	1,099,483.00	565,026.00	3,270,035.00	671,159.00	
Net Pension Liability		191,091,000.00	86,964,460.00	20,503,460.00	257,552,000.00	24,697,290.00	
Totals for Debt Entered:		\$232,835,539.00	\$89,878,188.00	\$26,076,396.00	\$296,637,331.00	\$32,698,954.00	\$1,264,496.00

General Fund (10)

Section 1: Tuition/Purchased Services as Reported within Expenditure Detail

	Amount
Tuition Reported in General Fund Expenditures 1000-560	17,805,093.88
Purchased Services in General Fund Expenditures 1000-594 and 1000-597	
Section 1 Total	\$17,805,093.88

Section 2: Tuition Paid to Institution Types During Fiscal Year

	Tuition Paid For Nonspecial Education	Tuition Paid For Special Education	Total
1 1306 Institutions	117,023.89	211,293.80	328,317.69
2 Institutionalized Children's Programs			
3 Juveniles Incarcerated in Adult Facilities	107,405.10		107,405.10
4 Residential Treatment Facilities		264,510.62	264,510.62
5 Other Local Education Agencies		194,312.46	194,312.46
6 Brick and Mortar Charter Schools	2,005,698.27	494,295.82	2,499,994.09
7 Cyber Charter Schools	2,543,588.99	1,384,549.08	3,928,138.07
8 Career and Technology Centers	978,204.12	356,128.00	1,334,332.12
9 Approved Private Schools		4,347,122.46	4,347,122.46
10 PA Chartered Schools for the Deaf and Blind			
11 Private Residential Rehabilitative Institutions	264,429.08		264,429.08
12 Juvenile Detention Centers	111,028.79	57,355.96	168,384.75
13 Special Program Jointures			
14 Other Tuition Not Included Elsewhere In This Section	829,840.00	3,538,307.44	4,368,147.44
Section 2 Total	\$6,957,218.24	\$10,847,875.64	\$17,805,093.88

1 .	<u>Student Transportation Services for Educational Field Trips</u>	54,470.85
2 .	<u>Student Transportation Services for Student Activities</u>	103,593.05
3 .	<u>Rental of Vehicles for Student Transportation Services</u>	
4 .	<u>Capital Reserve Funds</u>	

Include only district-owned transportation expenditures paid from State or local money.
 DO NOT include federal expenditures or payments to contract service providers.
 Contracted transportation services should not be recorded on this schedule.

Food Service / Cafeteria Operations Fund (51)

3000 Operation of Non-Instructional Services

Total

300 Purchased Professional and Technical Services

324 Professional Educational Services – Employee Training and Development Services 75.00

Total Purchased Professional and Technical Services \$75.00

400 Purchased Property Services

430 Repairs and Maintenance Services 4,850.00

Total Purchased Property Services \$4,850.00

500 Other Purchased Services

530 Communications 1,191.28

540 Advertising 1,705.52

570 Food Service Management 5,390,542.99

596 Direct Payments To Intermediate Units 14,133.85

Total Other Purchased Services \$5,407,573.64

600 Supplies

610 General Supplies 2,640.56

630 Food 258,234.87

Total Supplies \$260,875.43

700 Property

740 Depreciation 44,708.92

750 Equipment – Original and Additional 1,254.09

760 Equipment – Replacement 3,728.57

Total Property \$49,691.58

Total 3000 Operation of Non-Instructional Services \$5,723,065.65

Food Service / Cafeteria Operations Fund (51)

	<u>Elementary</u>	<u>Secondary</u>	<u>Federal</u>	<u>Total</u>
3100 Food Services				
300 <u>Purchased Professional and Technical Services</u>				
324 Professional Educational Services – Employee Training and Development Services				75.00
Total Purchased Professional and Technical Services				\$75.00
400 <u>Purchased Property Services</u>				
430 Repairs and Maintenance Services				4,850.00
Total Purchased Property Services				\$4,850.00
500 <u>Other Purchased Services</u>				
530 Communications				1,191.28
540 Advertising				1,705.52
570 Food Service Management				5,390,542.99
596 Direct Payments To Intermediate Units				14,133.85
Total Other Purchased Services				\$5,407,573.64
600 <u>Supplies</u>				
610 General Supplies				2,640.56
630 Food				258,234.87
Total Supplies				\$260,875.43
700 <u>Property</u>				
740 Depreciation				44,708.92
750 Equipment – Original and Additional				1,254.09
760 Equipment – Replacement				3,728.57
Total Property				\$49,691.58
Total 3100 Food Services				\$5,723,065.65

	<u>Food Service(51)</u>	<u>Child Care Operations(52)</u>	<u>Other Enterprise(58)</u>	<u>Internal Service(60)</u>	<u>Total</u>
3000 <u>Operation of Non-Instructional Services</u>					
3100 Food Services	5,723,065.65				5,723,065.65
Total Operation of Non-Instructional Services	\$5,723,065.65				\$5,723,065.65
TOTAL ACTUAL EXPENDITURES & OTHER FINANCING USES	\$5,723,065.65				\$5,723,065.65