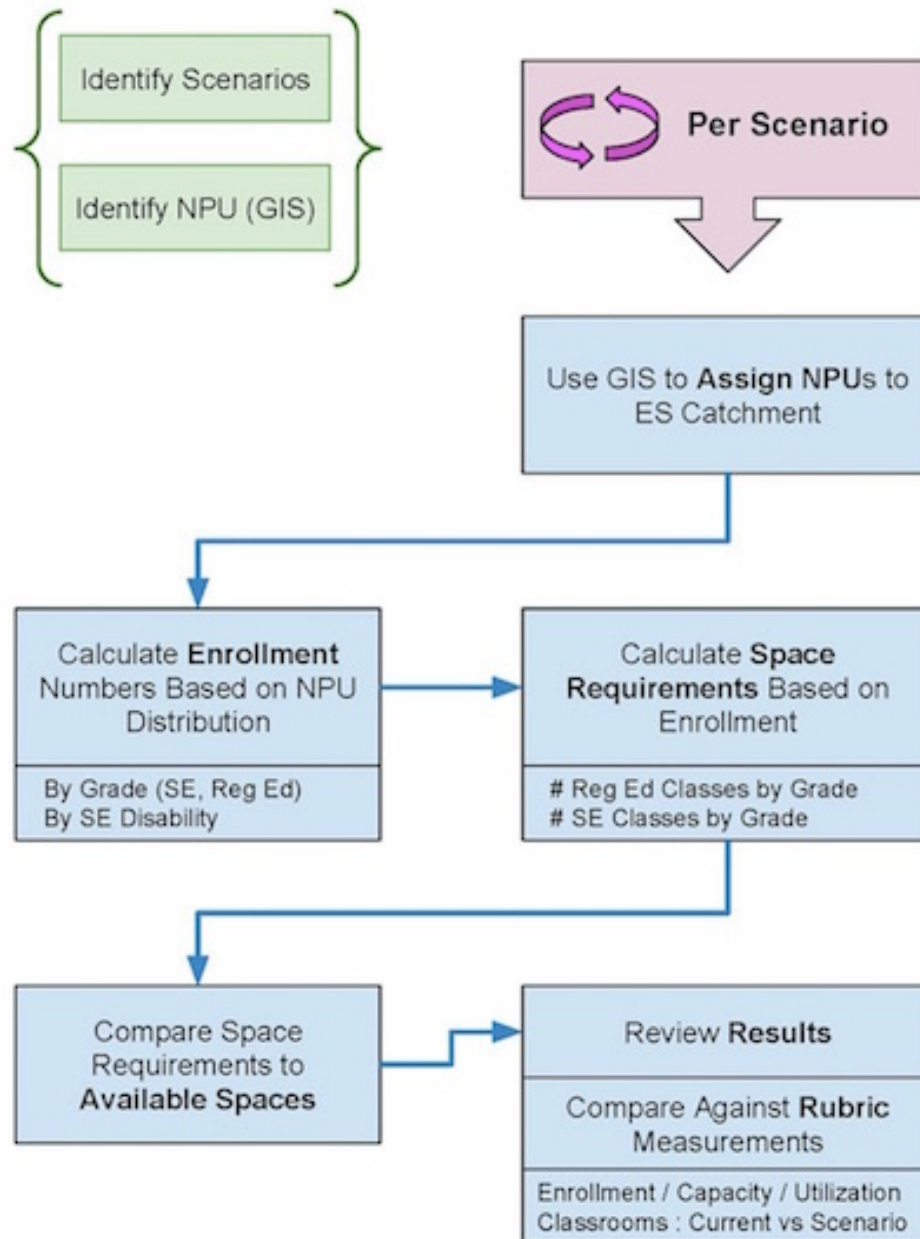


# Upper Darby School District

Facility Committee Update  
July 25, 2017



# UDSD Scenario Analysis Flow





# Assumptions Based on Ed Specs



**The following assumptions applied to all scenarios:**

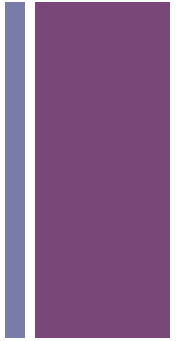
- **All UDSD elementary school buildings will be used unless specified. The Senkow building will not be used. The Kindergarten building will not be used in its current grade configuration. The Kelly building will be utilized as a K-5.**
- **No modular buildings will be used.**
- **All kindergartens classes will be at the students neighborhood elementary school. All kindergarten classes will be half day. Space capacity will be configured based on the UDSD Education Specifications.**
- \* **No additions at Aronimink for scenarios where Kindergarten Center building used as K-5.**



# Possible Scenarios

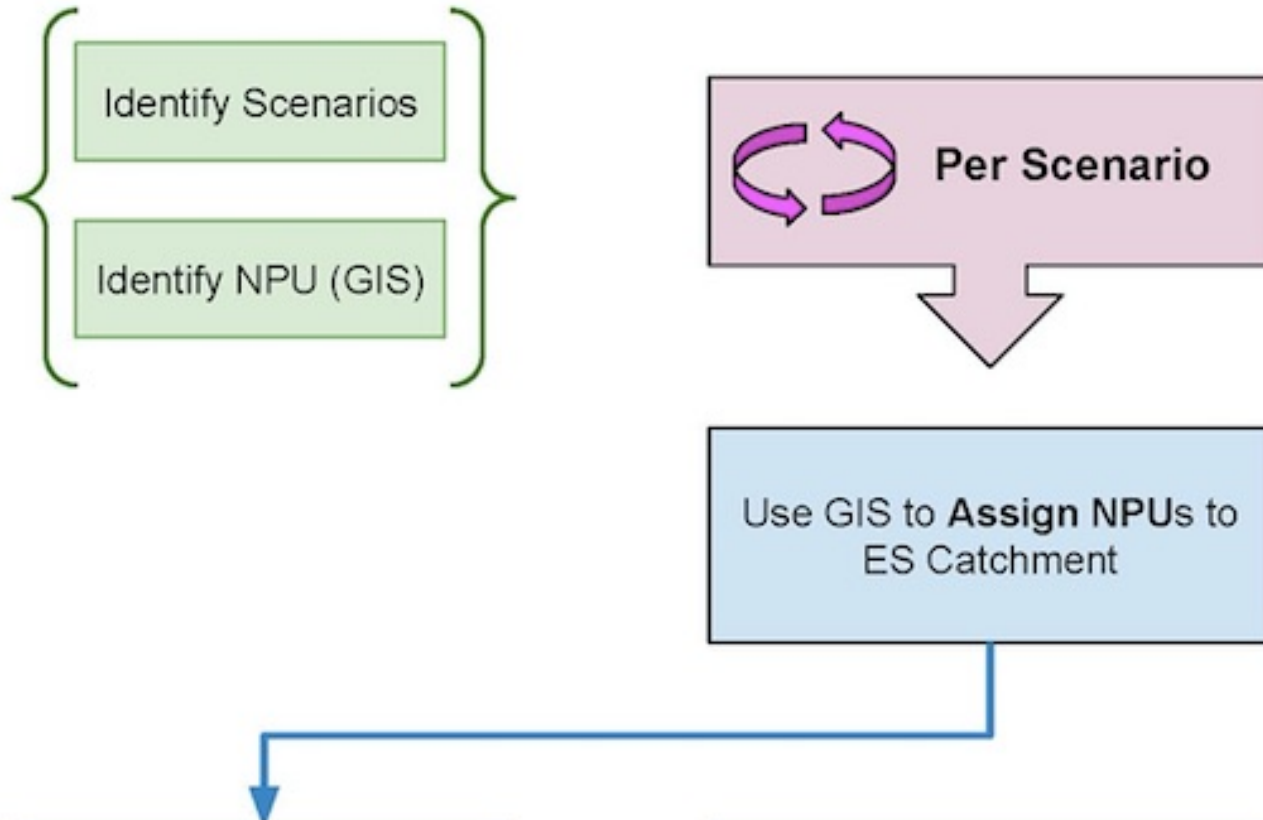
30 scenarios based on three different principles:

- **Review of total enrollment of students in current NPUs**
- **Special Education students in NPUs (included)**
- **Elementary Education Specifications (completed by architect)**



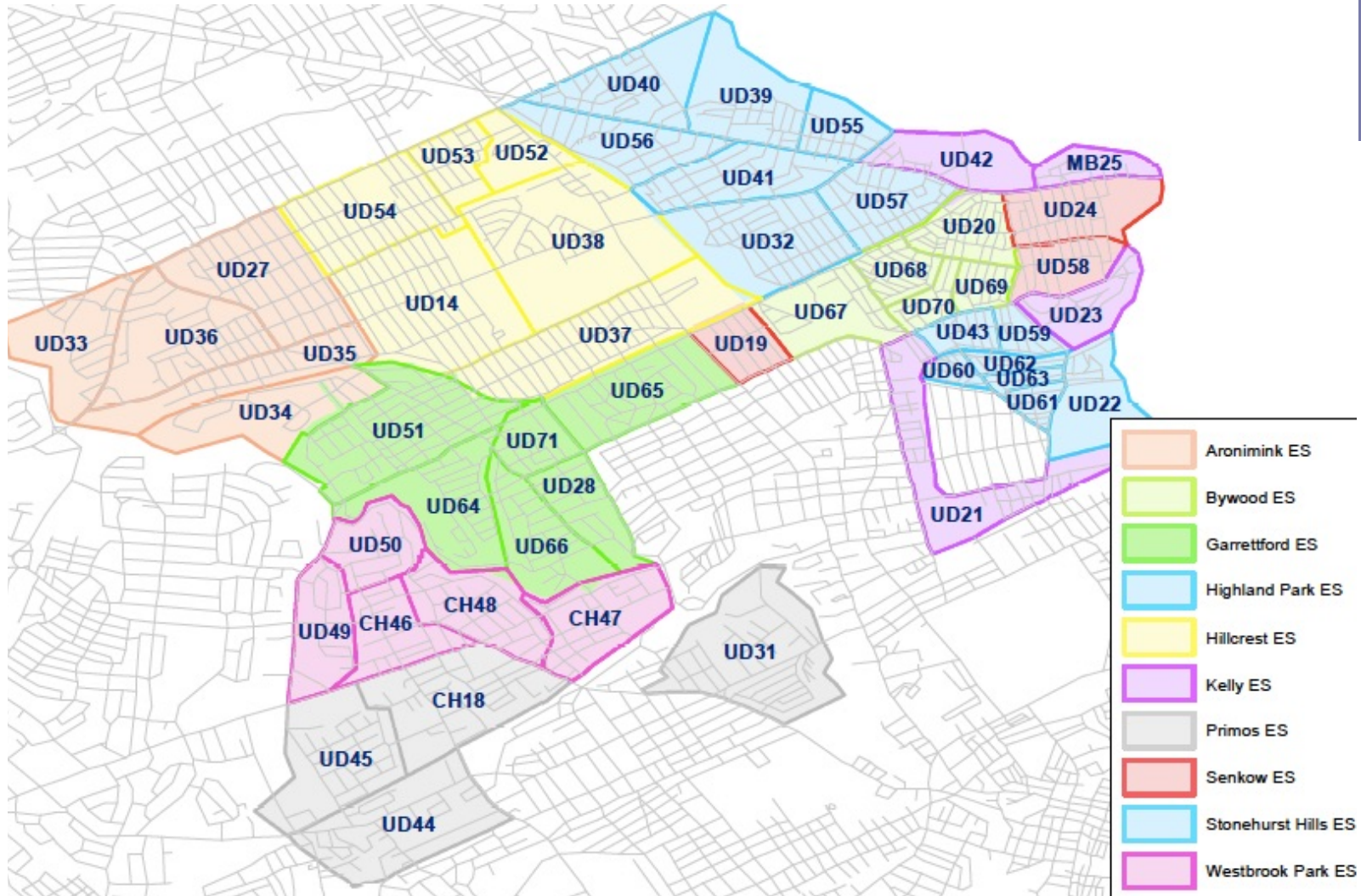


# UDSD Scenario Analysis Flow





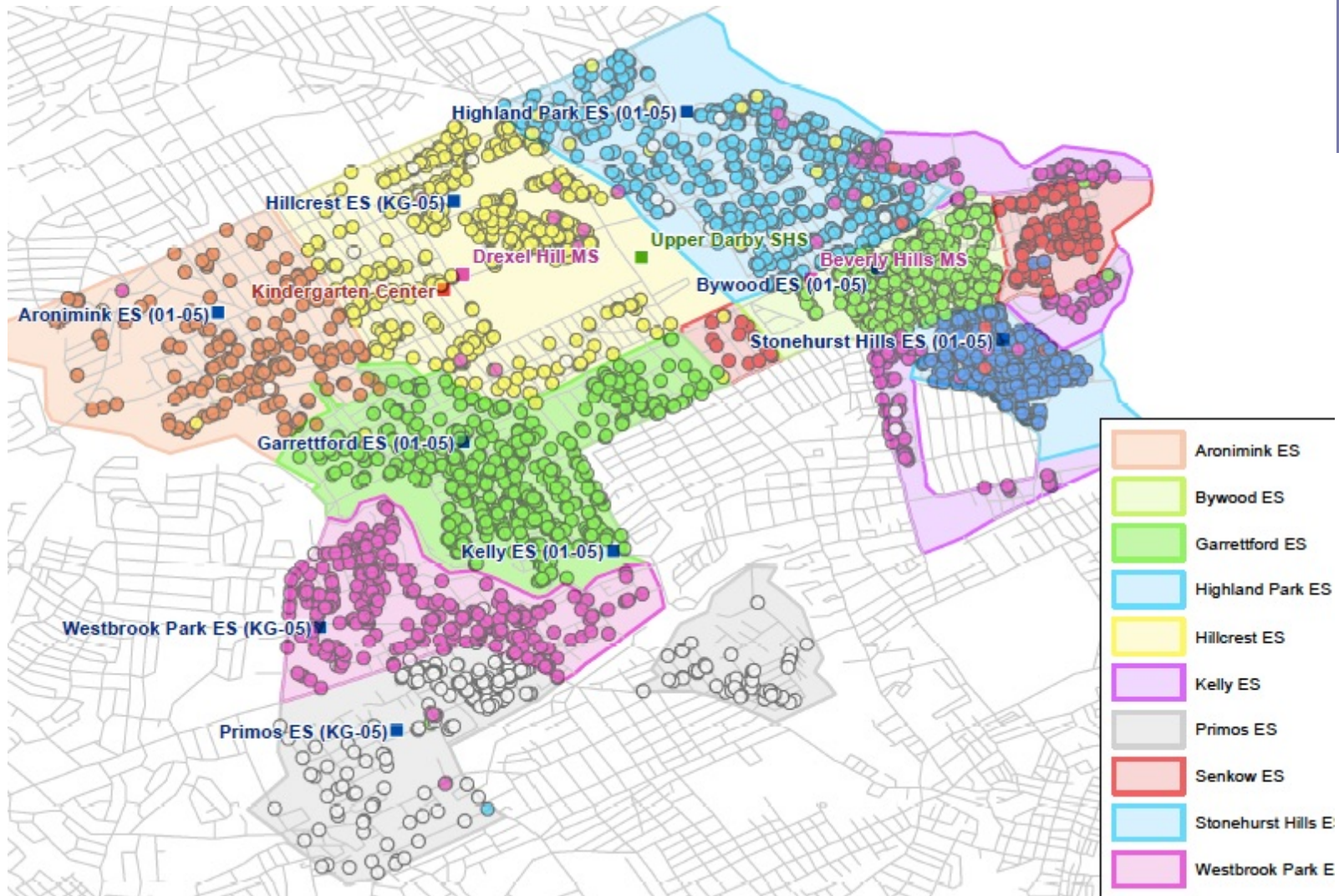
# Neighborhood Planning Units (NPUs)





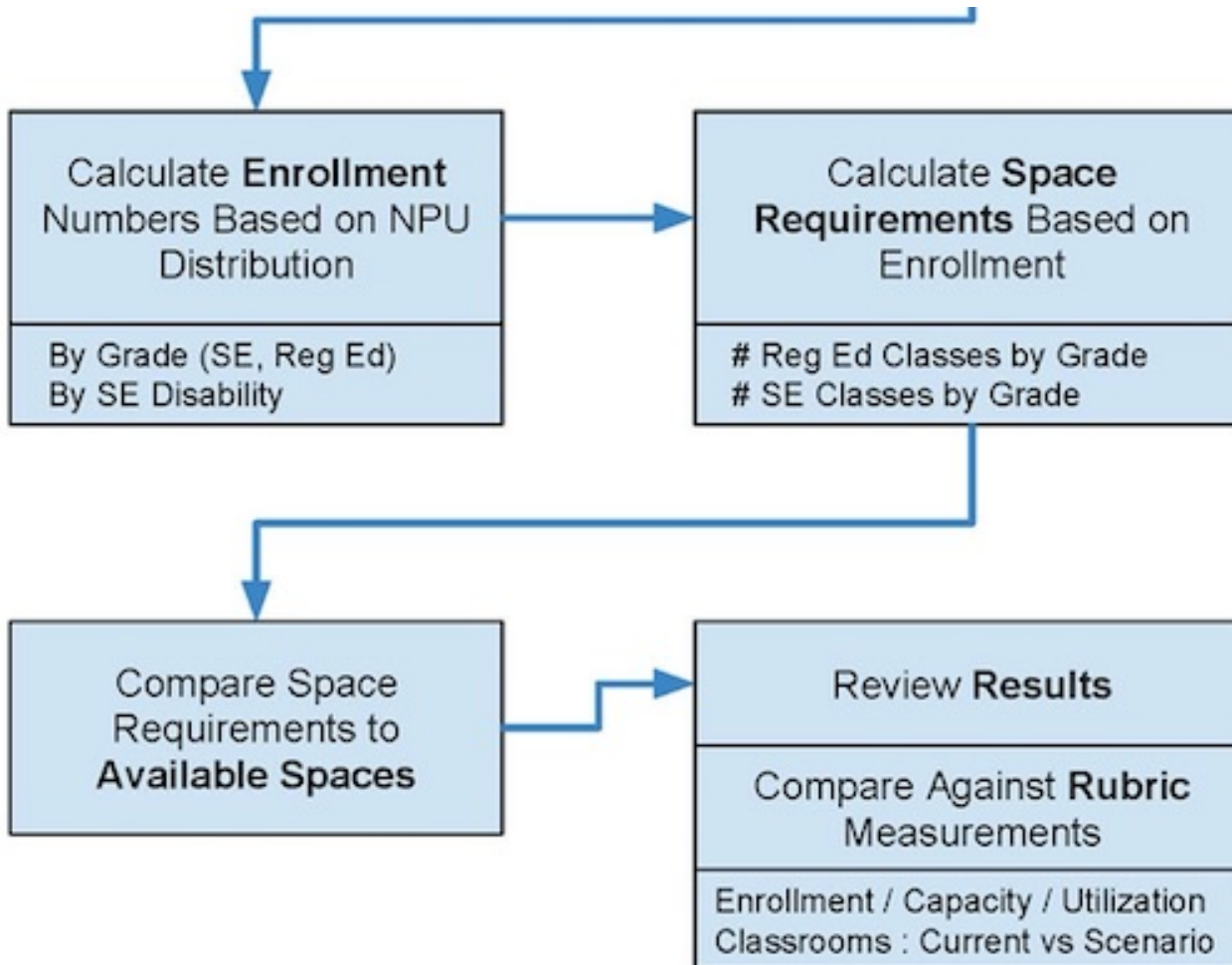


# Elementary School Students and Boundaries





# UDSD Scenario Analysis Flow Con't







# Committee Recommendations



- **Facilities Committee would like to narrow down scenarios based on enrollment and class size guidelines already determined by the Board**
- **Facilities Committee would like to present to the Board and public the feasible scenarios at the August 22<sup>nd</sup> Committee Meeting**
- **Board decision at September 8<sup>th</sup> Board Meeting on scenario to pursue based on the August 22<sup>nd</sup> presentation**